

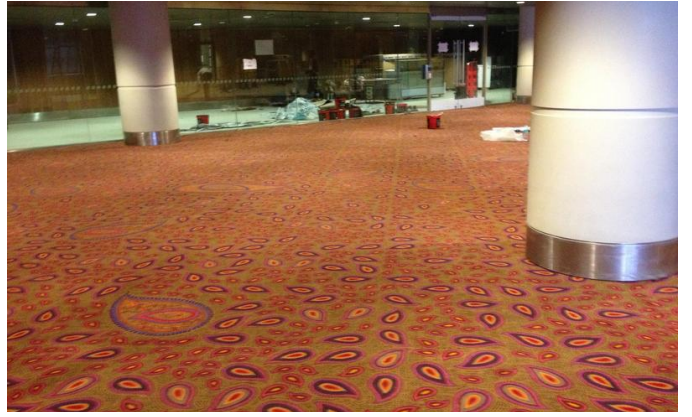
The Chhatrapati Shivaji International Airport (CSIA) or T2 as it is commonly known, is named after the 17th century Maratha emperor, Chhatrapati Shivaji. The new integrated terminal was opened for international operations on 12 February 2014. CSIA is capable of handling 40 million passengers and 1 million metric tonnes of cargo annually.

Travelers experience a monolithic but warm, open and light-filled check-in hall, featuring 188 check-in counters. All these are sheltered underneath the 11-acre long-span roof, supported by an array of 30 mushrooming multi-story mega-columns. Small disks of colorful glass recessed within the canopy's coffers illuminate the hall below with light, whose symposium of colors makes reference to The Peacock, India's national bird and the inspiration for the airport. After check-in, 60 immigration counters, 124 security check positions, 41 travellers, 47 escalators & 73 elevators efficiently & swiftly process passengers for boarding. The airport houses India's largest art museum called 'Jaya He' which has over 6500 artifacts and artworks of several artists.

Brintons is delighted to be associated with such a prestigious project. Our credentials of having been the sole supplier for many international airports made us the front runner for this spectacular structure as well. Brintons will be supplying about 40,000 sqm2 of 1228MA axminster carpets for the arrival corridors and fixed bridge areas. The carpet design and colors enhance and magnify the look and feel of this ostentatious structure.

Project summary

| | |
|----------------|---|
| Name | Chhatrapati Shivaji International Airport, T2, Mumbai |
| Details | 40,000 sqm2 of 1228MA |
| Date | 2013 - 2014 |



If you have a similar project you would like to discuss, please contact our central team:

Telephone +44 (0)1562 635665