



The ANA Grand Court Nagoya recently underwent an extensive refurbishment program involving all rooms and corridors. The quality and impact of this refurbishment has allowed the hotel to rebrand and move up to the more prestigious Crowne Plaza status.

Brintons Singapore team created a suite of organic designs based on the concept of foliage. Vibrant vines and intricately detailed large leaves can be found creeping through the corridors, leading guests from the lift lobbies to their rooms. Guestrooms are plush and welcoming with a pattern of layered leaves in a shadowy palette adorning the floor.

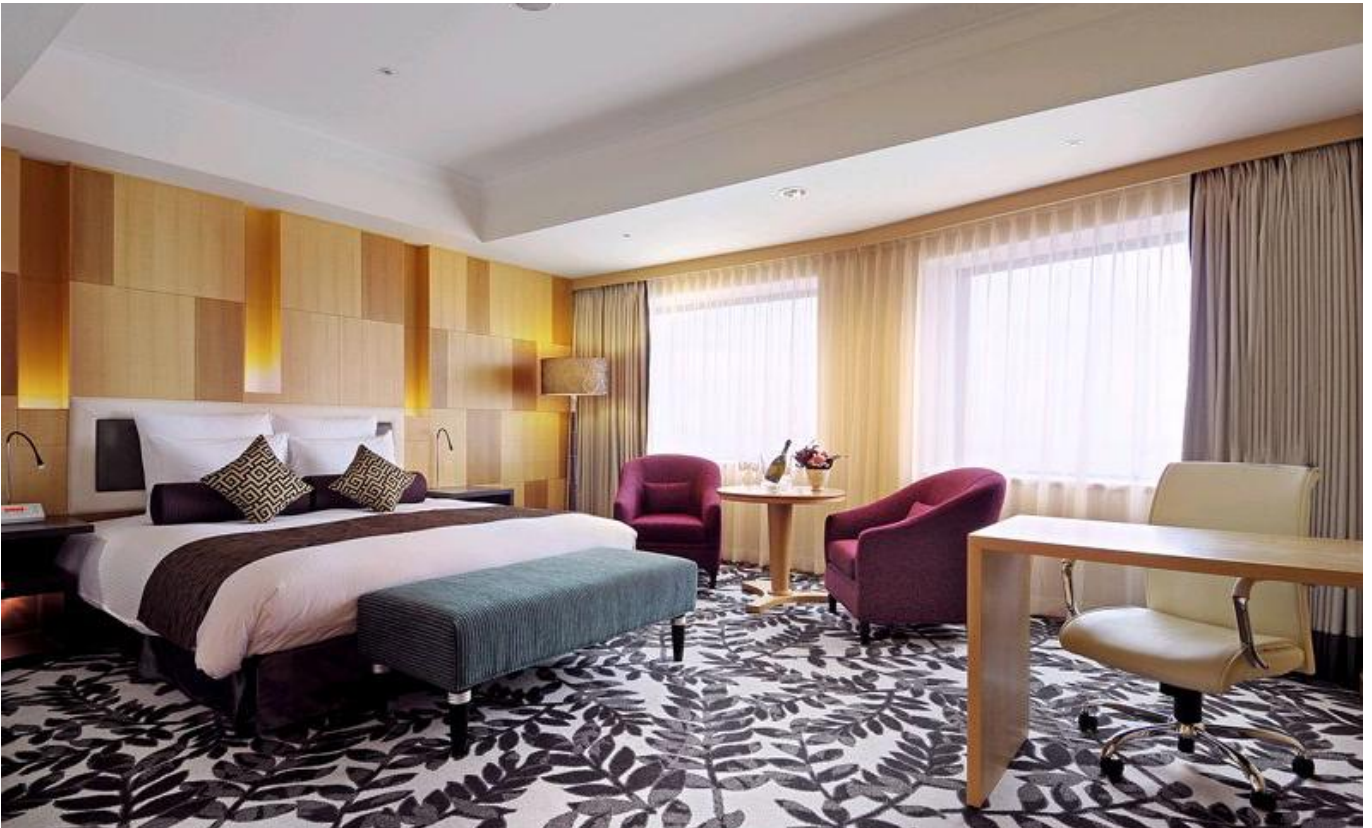


I am very happy with the way in which the carpet designs bring the hotel to life and truly make the spaces warm and welcoming for guests. I believe the designs achieve the original intention, effectively linking to the central theme of the two large trees in the lobby throughout the entire hotel.

Ms Yukiko Uchida
Interior Designer, Nihon Sekkei Inc.

Project summary

Name	ANA Crowne Plaza Hotel Grand Court, Nagoya
Details	...
Date	...



If you have a similar project you would like to discuss, please contact our central team:

Telephone +44 (0)1562 635665