



BY APPOINTMENT  
TO HER MAJESTY THE QUEEN  
CARPET MANUFACTURERS  
BRINTONS CARPETS LIMITED, ROSENTHAM

# Brintons

cut & loop wilton





### **Cut and Loop woollen Wilton by Brintons**

Carpet is the foundation of the guestroom. As the largest design element in the space, carpet has an important role to play in the overall interior.

With a woollen wilton carpet, woven in sophisticated restrained palettes of two and three colors, the floor can act as a solid neutral base or a textured statement to build your room atop of.

Brintons carpets are manufactured on face to face looms housed in Brintons wholly owned ISO 14001 accredited facilities. Wilton carpets are woven with 100% wool creating a high-quality durable floorcovering that does not suffer from delamination and stability weakness often associated with tufted carpets.



The possibilities are endless

Enhance guest experience with a 100% loop woven wilton or play with different cut percentages to achieve a luxurious woollen carpet.

Sophisticated textured options, with cut and loop construction, hide stains and provide much needed visual depth to minimal contemporary interiors.

100% LOOP

width 4m, two colors

pile yarn 100% wool (6mm loop)

backing materials polyester/cotton, polyester,  
polypropylene, latex

tuft density 54 per sq inch

total carpet thickness 0.37 inches

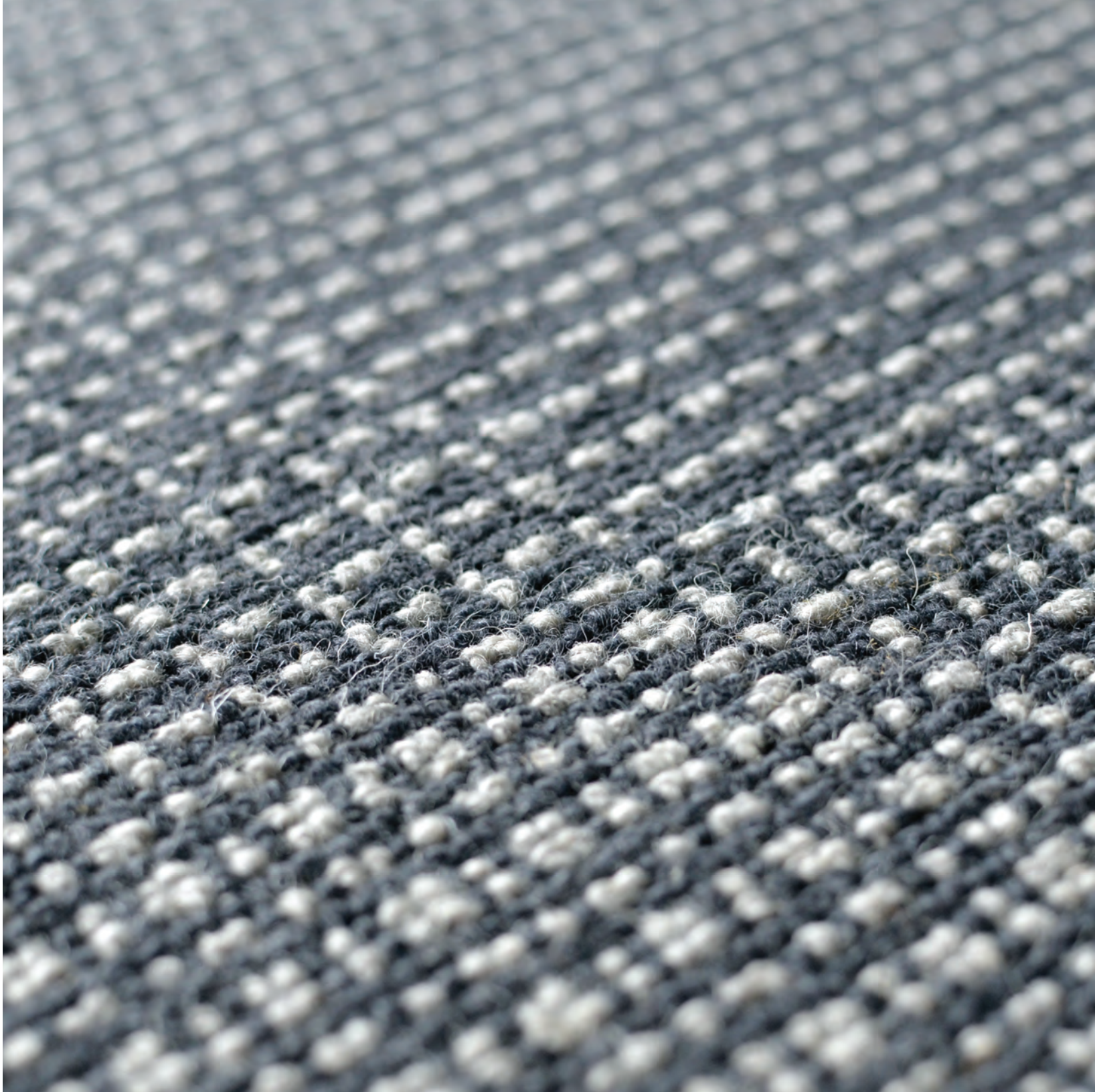
total pile weight 41.88 oz/yd<sup>2</sup>

total carpet weight 60.90 oz/yd<sup>2</sup>

FLAMMABILITY

Europe CE Mark EN 13501-I

USA ASTM E648







## CUT & LOOP WILTON

### Complement your interior

Brintons wilton allows designers to incorporate dynamic textural effects in high-quality guestroom flooring. 100% wool paired with cut and loop construction offers unparalleled dimension and irresistible tactility.

Achieve harmony by repeating geometric and organic design elements in a different scale or bring the outdoors in with traditional florals and meandering botanicals. Choose up to three colours from over 500 tufts in our standard and neutral pom boxes to create your custom cut and loop wilton carpet.



#### CUT/LOOP

width 4m, three colours

pile yarn 100% wool (8mm cut/ 6mm loop)

backing materials polyester/cotton, polyester, polypropylene, latex



tuft density 62 per sq inch

total carpet thickness 0.45 inches

total pile weight 48.02 oz/yd<sup>2</sup>

total carpet weight 67.66 oz/yd<sup>2</sup>\*

\*weights may vary where designs have a high % usage of cut or loop

#### FLAMMABILITY

Europe CE Mark EN 13501-I

USA ASTM E648



### Choose Wool

Wool is a naturally occurring rapidly renewable resource. All wool types used by Brintons are from sheep whose fleece is sheared off annually as a natural byproduct. The wool from these breeds have the properties required to produce a carpet with exceptional appearance and longevity in performance.

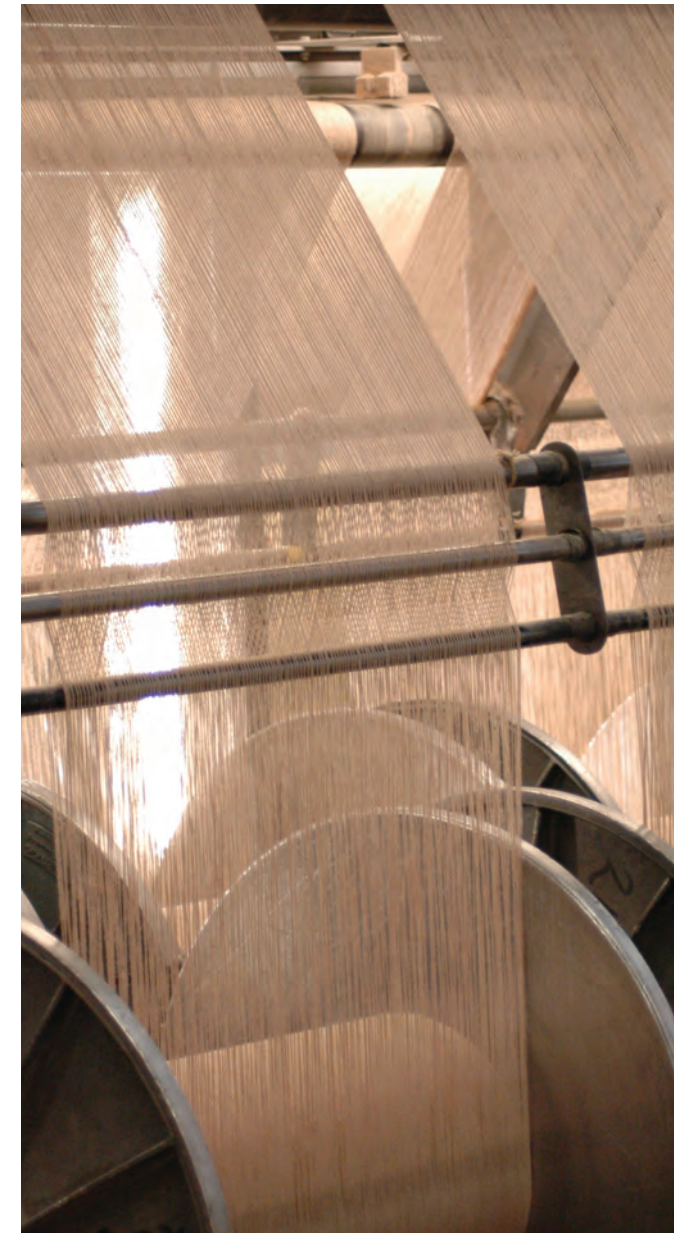
Aside from unparalleled comfort, wool is less flammable than synthetic fibers, will absorb background noise, and is a superb insulator.

### Benefits of Wool:

- Wool has a natural resistance to dirt and water; making it exceptionally easy to maintain
- Naturally flame retardant, wool is safe for use in commercial interiors
- A renewable and biodegradable natural source
- Raised and manufactured with little impact, it is one of the most environmentally friendly products
- Highly energy efficient, reduces heat loss
- Retains and releases moisture, making interior environments more comfortable
- Naturally absorbs air contaminants
- As an acoustic insulator it limits the spread of sound







### **Working With Us**

From developing in-house Wilton technology to owning one of the largest design archives in the industry, Brintons continues to command recognition as a powerful creative source. Brintons fully commits to the concept of thinking globally and acting locally by operating with strategically placed account managers, project management, customer support, and design teams in each leading market worldwide.

The Brintons team strives to create exceptional products to meet the demand of any bespoke design brief and continues to surpass client expectations. By choosing to work with Brintons, you will have access to a unique global network of innovative design studios, talented field designers, and accomplished project managers.

### **Project Management**

From start to finish your project will be championed by a dedicated project manager who will guide you through the entire process from planning and estimating to installation and aftercare.

### **Installation + Aftercare**

Brintons is always available to provide you with the information and support you need to ensure your carpet retains its appearance and performs to specification.



# Brintons

## **Brintons Americas**

Tel: +1 678 594 9300

Fax: +1 678 594 9301

Email: [brintons@brintonsusa.com](mailto:brintons@brintonsusa.com)

## **Brintons Europe, Middle East and Africa**

Tel: +44 (0)1562 635 665

Fax: +44 (0)1562 634 737

Email: [solutions@brintons.co.uk](mailto:solutions@brintons.co.uk)

## **Brintons Asia Pacific**

Tel: +61 (0) 3 9676 3333

Fax: +61 (0) 3 9676 3377

Email: [enquiries@brintons.com.au](mailto:enquiries@brintons.com.au)

[www.brintons.net](http://www.brintons.net)



[instagram.com/brintons\\_carpets](https://www.instagram.com/brintons_carpets)



[linkedin.com/company/brintons](https://www.linkedin.com/company/brintons)



[pinterest.com/brintons](https://www.pinterest.com/brintons)