



Brintons

The background is a detailed, sepia-toned map of London, showing streets, parks, and landmarks. Overlaid on this map is a large, circular clock face with Roman numerals. The clock face is centered in the middle of the page, and its hands are positioned to point towards the bottom right. The text 'the self-expression project' is written in a white, sans-serif font across the center of the clock face.

the **self-expression** project

#TheBrintonsSEP

Group 5, Sundial



The Self-Expression Project

Group 5, Sundial

All in due time: As the year-long creative venture comes to a close, the last group of self-expression project designers respond to a more literal representation of time - the sundial. Designers studied the object for two weeks before diving in and translating their thoughts into axminster carpet.



Donna Davis, Senior Designer, Brintons Americas:

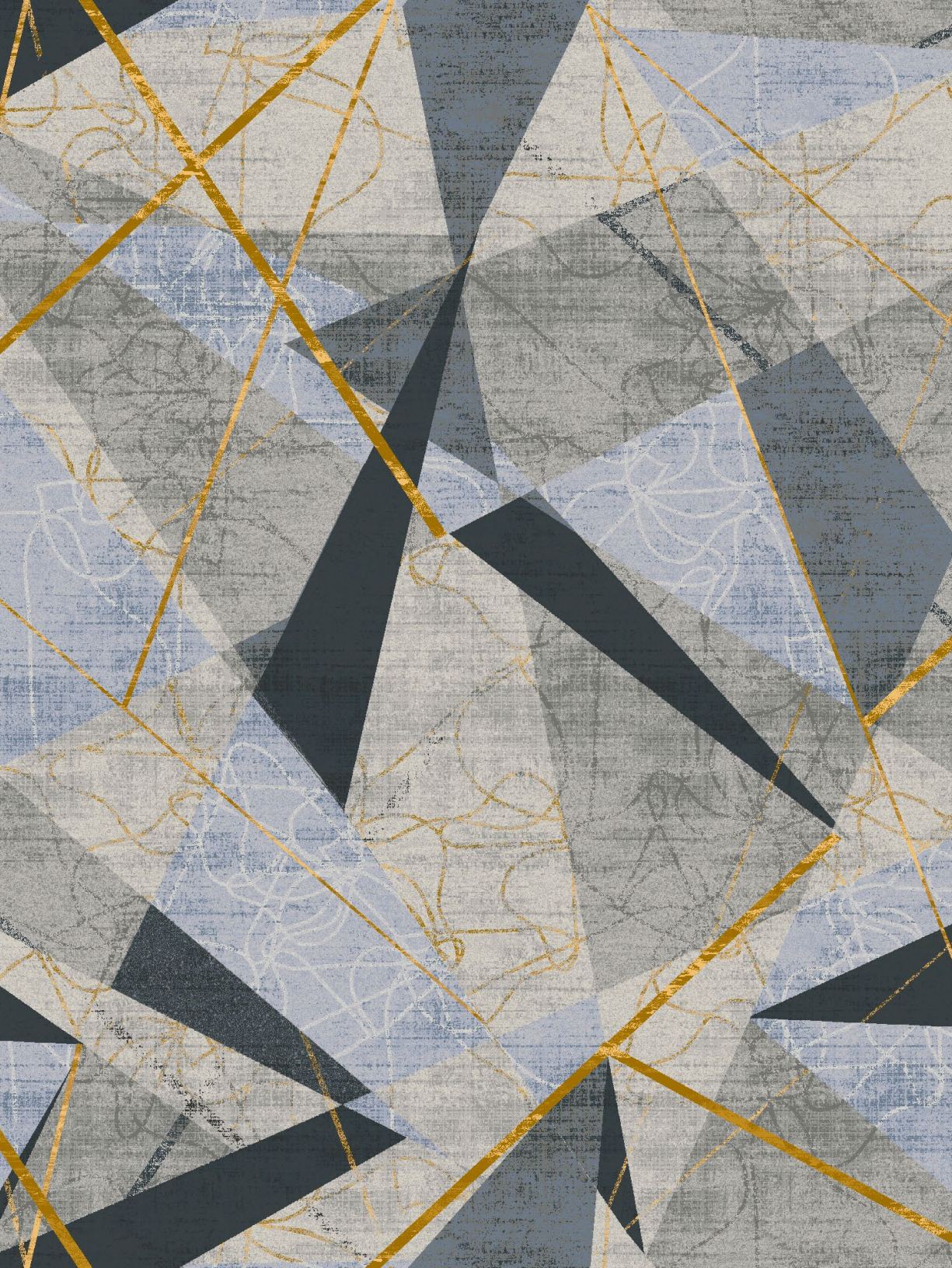
"My challenge for this project was to make the sundial into an abstract version of itself. I wanted it to be a contemporary nod to old world technology. By concentrating on the light striking the shiny gold arcs of the sundial, I was able to abstract the Da Vinci inspired mechanical drawings enough to achieve my final axminster design."

1	2	3	4	5	6	7	8	9
28-1329	24-4010	20-3200	20-4052	20-4053	20-V10	28-4168	26-1946	26-2916
10	11	12	13	14				
T 0 2 5 2	40-T5669	40-T6170	42-T6630	28-1981				

Design: Q01/A035680SE

©Brintons Carpets Limited
www.brintons.net





Cherise Porretto, Senior Designer, Brintons Americas:

“Having a sundial as inspiration to create was a nice challenge, considering using the sun to tell time is no longer the norm. In learning how to use one properly, my favorite part of this process was becoming aware of the simple elements surrounding the sundial. Natural light, changes in the weather, and even the texture of concrete it laid on guided my color and texture decisions. Studying the angles of the shadows cast throughout the day, I took the literal shapes and twisted them around using different opacities to create layers. After learning about its history, the different styles, and the use of trigonometry, much respect is gained for this clever instrument.”

1	2	3	4	5	6	7	8	9
40-T6170	40-T5669	40-T7304	17-0092	20-3200	20-V33	20-4062	20-3040	20-4176
10	11	12	13	14	15			
40-T7794	40-T7163	13-0261	26-4208	26-L9008	18-0110			

Design: Q01/A22370ZSE

©Brintons Carpets Limited
www.brintons.net



Solongo Drini, Senior Designer, Brintons Americas:

"When given the sundial to respond to, I immediately envisioned a casino design with a large and detailed repeat. I wanted to create something that would draw in people's attention and pique their curiosity."



24-3644 18-0734 42-T6392 17-0103 24-4008 24-4009 24-4015 24-3294 24-4066

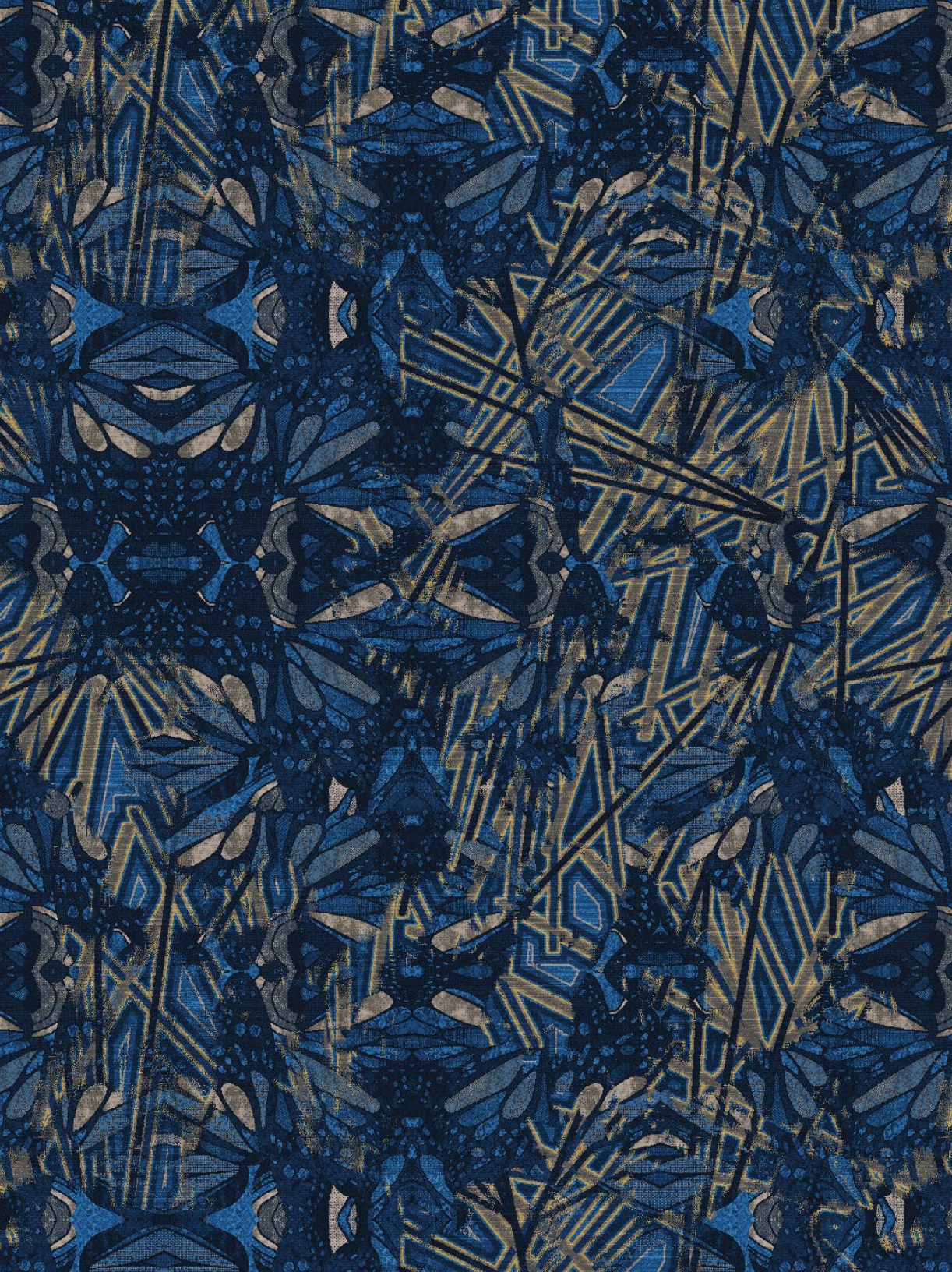


24-2712

Design: Q01/A20366ZSE

©Brintons Carpets Limited
www.brintons.net





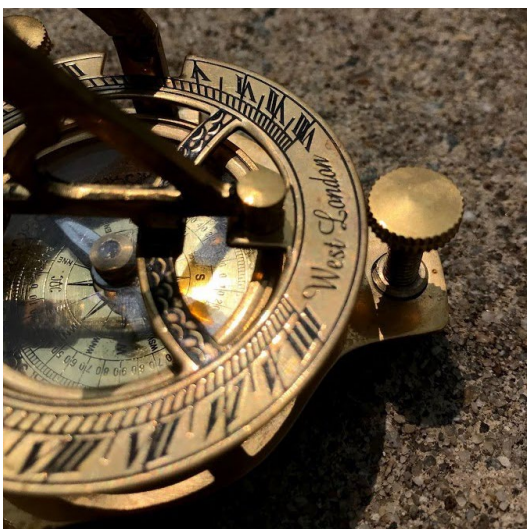
Nandita Gharat-Hurt, Senior Designer, Brintons Americas:

"I was inspired by the sundial's representation of time. This led me to think of butterflies and the chaos phenomena 'The Butterfly Theory'. The theory explains how one tiny change in a state can cause a ripple that alters the larger fabric of said state. The butterfly wings in my design symbolize alternate theories overlapping each other and the linear angles represent the gnomon of a sundial as they both intersect randomly."

1	2	3	4	5	6	7	8	9
23-3053	23-2825	23-4112	23-3613	23-2855	23-4232	23-4233	40-T7573	40-T8106
10	11	12	13	14				
40-T5669	42-T7797	40-T6170	26-2916	26-V126				

Design: Q01/A034616SE

©Brintons Carpets Limited
www.brintons.net



See the Self-Expression Project designs [here](#)



discover more on DSO
dso.brintons.net