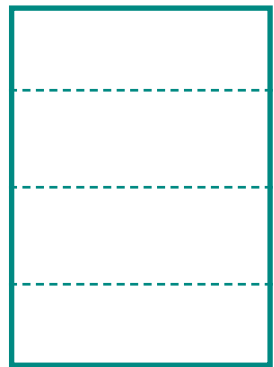


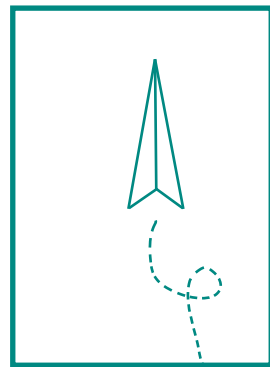
# THE PARLOR

— *by* Brintons —





1. designers participate in the Exquisite Corpse drawing game



2. drawings are gathered, photographed, + digital files distributed



3. designers translate drawings into Axminster carpets



Brintons

# THE PARLOR

Born from a drawing game Surrealist artists played to pass time and unlock the true creative essence of the unconscious, The Parlor is a collection of one of a kind Axminster designs with surprising linear transitions. Glowing neon hues contrast with moody velvet textures calling us to our local watering holes and reminding us of the intimate social spaces occupied by literature + art's greats.

Inspired by a space defined by community, The Parlor hinges on successful collaboration and exists as a conduit for unapologetic creation.





Following the rules of an age-old artist's game called the Exquisite Corpse, Brintons designers joined forces to produce unique hand drawn works of art. Each designer was tasked with completing a quarter of a drawing and shipping it to the next player in the game.



1.	20-1900
2.	42-T7293
3.	18-0734
4.	40-T5688
5.	40-T7302
6.	40-T7161
7.	20-4052
8.	20-4121
9.	20-V33
10.	23-3663
11.	23-3033
12.	29-1329

DESIGN: Q06/A045140PC  
12FT X 12FT







1. 29-1329

2. 23-3033

3. 23-3663

4. 20-V33

5. 20-3240

6. 24-MB003

7. 20-4121

8. 20-4052

9. 28-1912

10. 23-3323

11. 24-V144

12. 23-4153

DESIGN: Q01/A045138PC  
12FT X 12FT



“

IT WAS REMINISCENT OF ART PROJECTS WE USED TO DO IN HIGH SCHOOL AND COLLEGE, WHICH MADE ME FEEL SUPER NOSTALGIC AND LIKE I WAS AN ART STUDENT ALL OVER AGAIN.







1.	42-T7293
2.	23-3033
3.	40-T5688
4.	20-1900
5.	23-3663
6.	20-V33
7.	20-4053
8.	29-1329

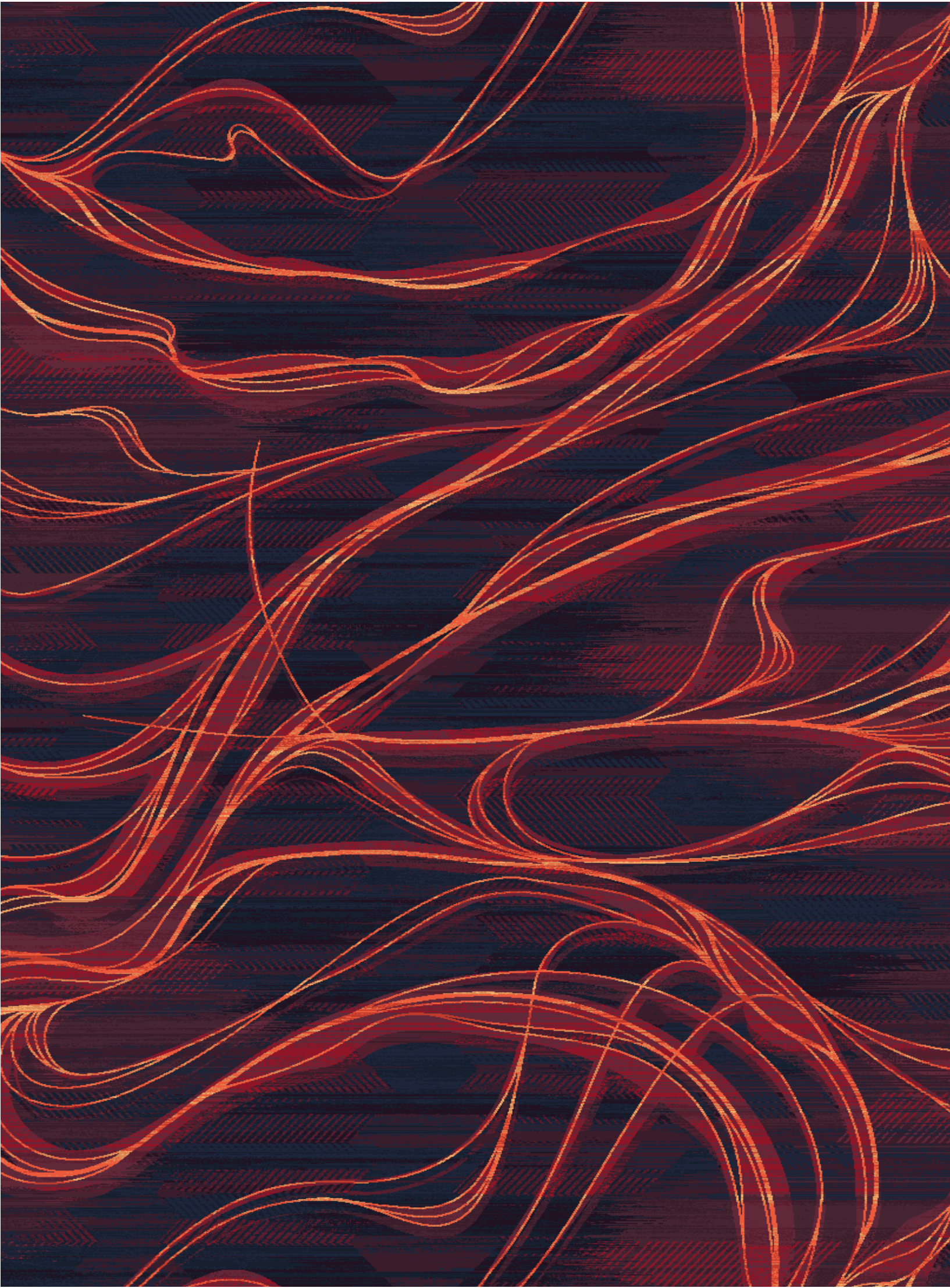
DESIGN: Q02/A045334PC  
12FT X 19FT 4IN





The next player is tasked with continuing the previous designer's work without revealing it in its entirety. The game leaves us with unexpected transitions between each drawing as the result of creatives expressing themselves while also leaning on collaboration.





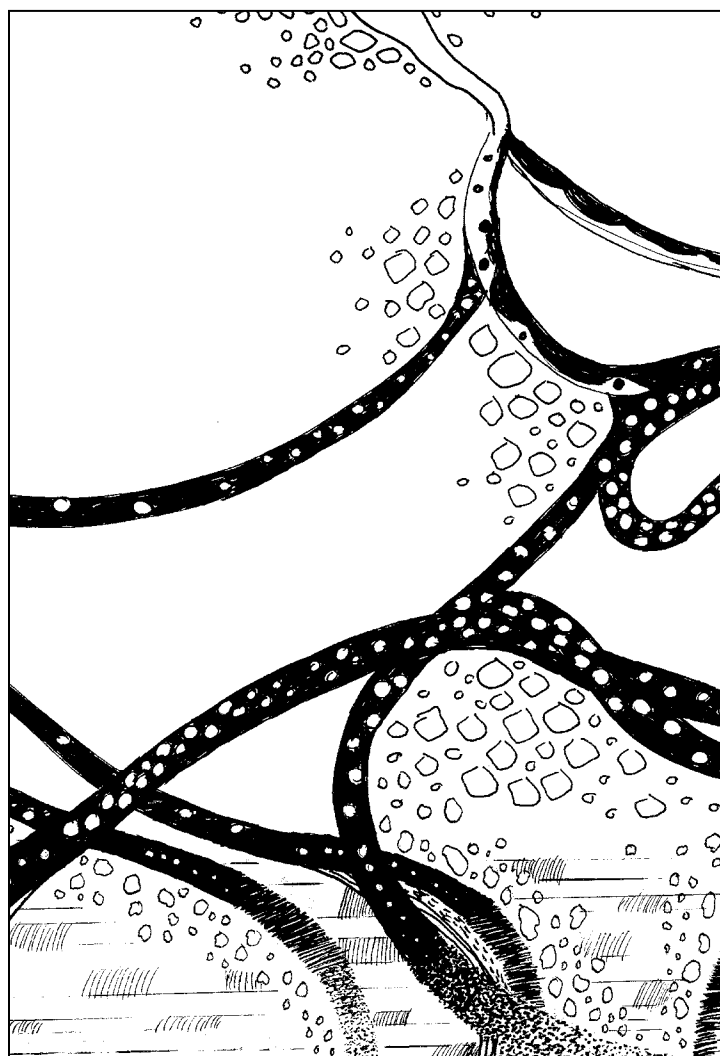
1.	18-0110
2.	18-0378
3.	27-4198
4.	27-4199
5.	21-V11
6.	29-4093
7.	21-4251
8.	29-4101
9.	29-4100
10.	23-3053
11.	20-2826
12.	29-2507

DESIGN: Q01/A044827PC  
12FT X 12FT

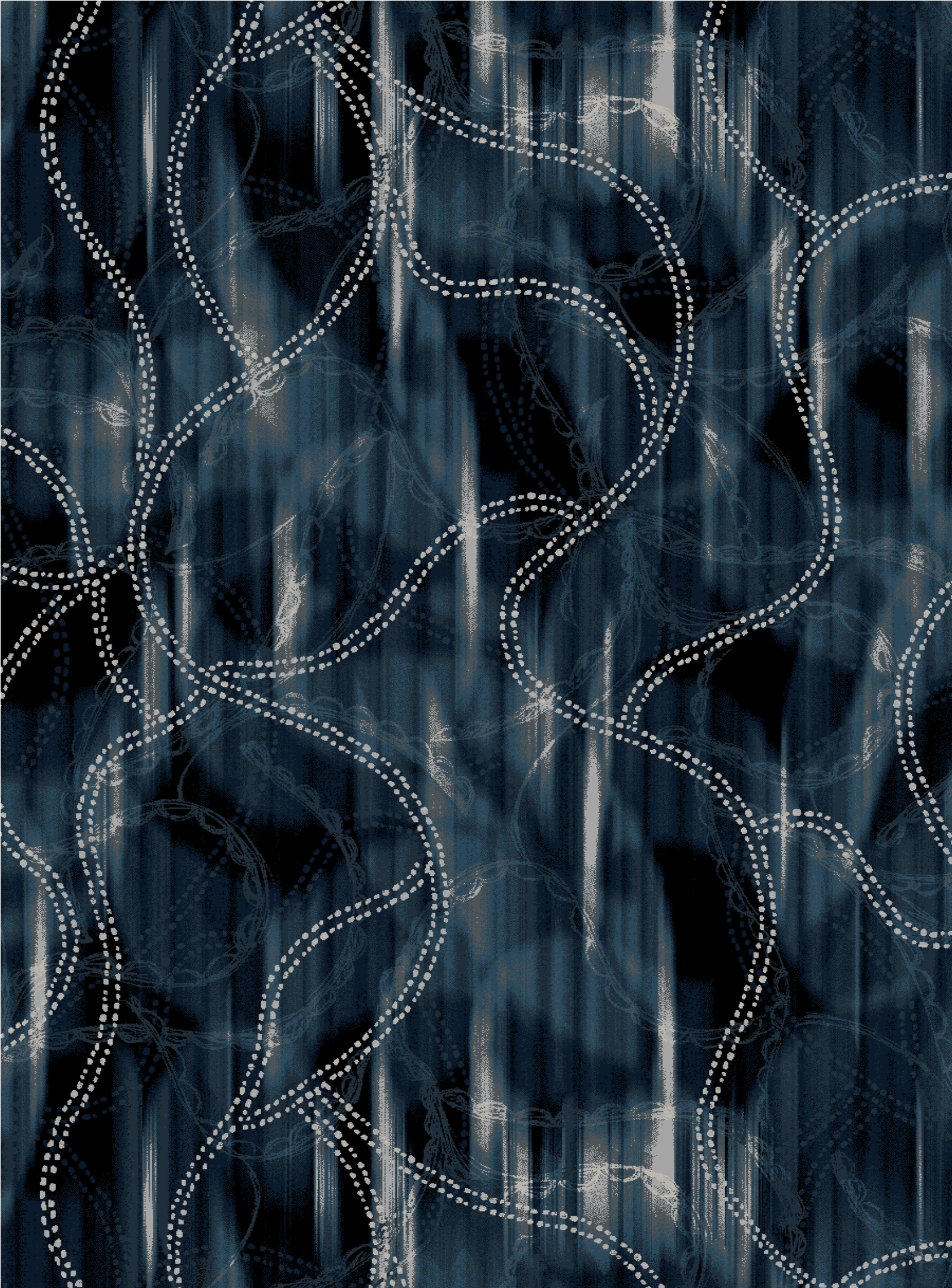


“

IT WAS A REMINDER THAT NO MATTER WHERE WE ARE IN OUR CREATIVE CAREERS, ALL DESIGNERS AND ARTISTS ARE STILL JUST STUDENTS OF ART.







1. 29-1329

2. 23-3033

3. 23-3663

4. 23-2830

5. 20-4174

6. 20-4175

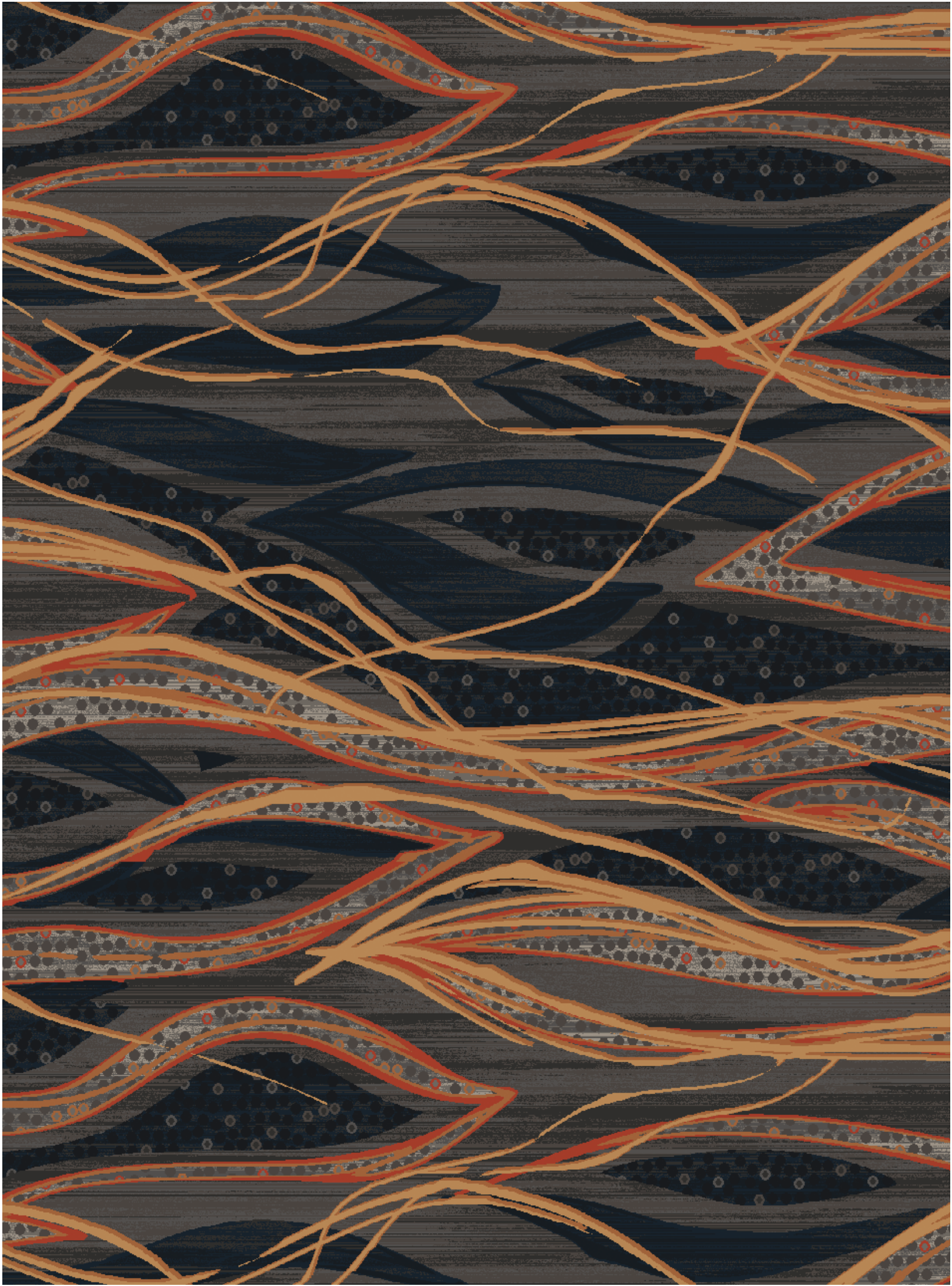
7. 20-4176

DESIGN: Q02/A045526PC  
12FT X 12FT



1.	29-1329
2.	23-3033
3.	23-3663
4.	40-T7573
5.	40-T7302
6.	27-4198
7.	18-0378
8.	42-T7293
9.	18-0110
10.	40-T7161
11.	40-T5688

DESIGN: Q01/A046652PC  
12FT X 12FT







Four separate inky illustrations travelled across North and South America, finally making their way back to the home office in Atlanta, GA where they were photographed. The digital files were then distributed to different groups of designers to be translated into woven Axminster carpet.



1. 26-4046

2. 26-4219

3. 13-0028

4. 12-0036

5. 42-T7293

6. 40-T5688

7. 40-T7161

8. 40-T7302

9. 40-T7573

10. 23-2830

11. 20-2826

12. 29-2507

DESIGN: Q01/A044816PC  
12FT X 12FT







1.	13-0028
2.	26-4046
3.	40-T7161
4.	40-T7302
5.	40-T7573
6.	23-2830
7.	20-2826
8.	29-2507
9.	26-4219
10.	12-0036
11.	40-T5668
12.	42-T7293

DESIGN: Q04/A044867PC  
12FT X 12FT



1. 26-4046

2. 26-4219

3. 13-0028

4. 40-T7302

5. 20-2826

6. 23-2830

7. 40-T7573

8. 40-T7161

9. 18-0110

10. 18-0378

11. 42-T7293

12. 12-0036

DESIGN: Q02/A045423PC  
12FT X 12FT







Four symbiotic drawings and twelve one of a kind woven Axminster carpets are the collateral of a collaborative exercise leaving us to question the rules of line + color.





1.	23-3273
2.	23-3773
3.	23-3763
4.	L9564
5.	42-T7293
6.	40-T5688
7.	40-T7161
8.	23-2830
9.	20-2826
10.	40-T7573
11.	29-2507

DESIGN: Q11/A044385PC  
12FT X 12FT



1. 29-2507

2. 23-3033

3. 20-2826

4. 23-2830

5. 40-T7161

6. 40-T5688

7. 42-T7293

8. L9564

9. 23-3763

10. 23-3773

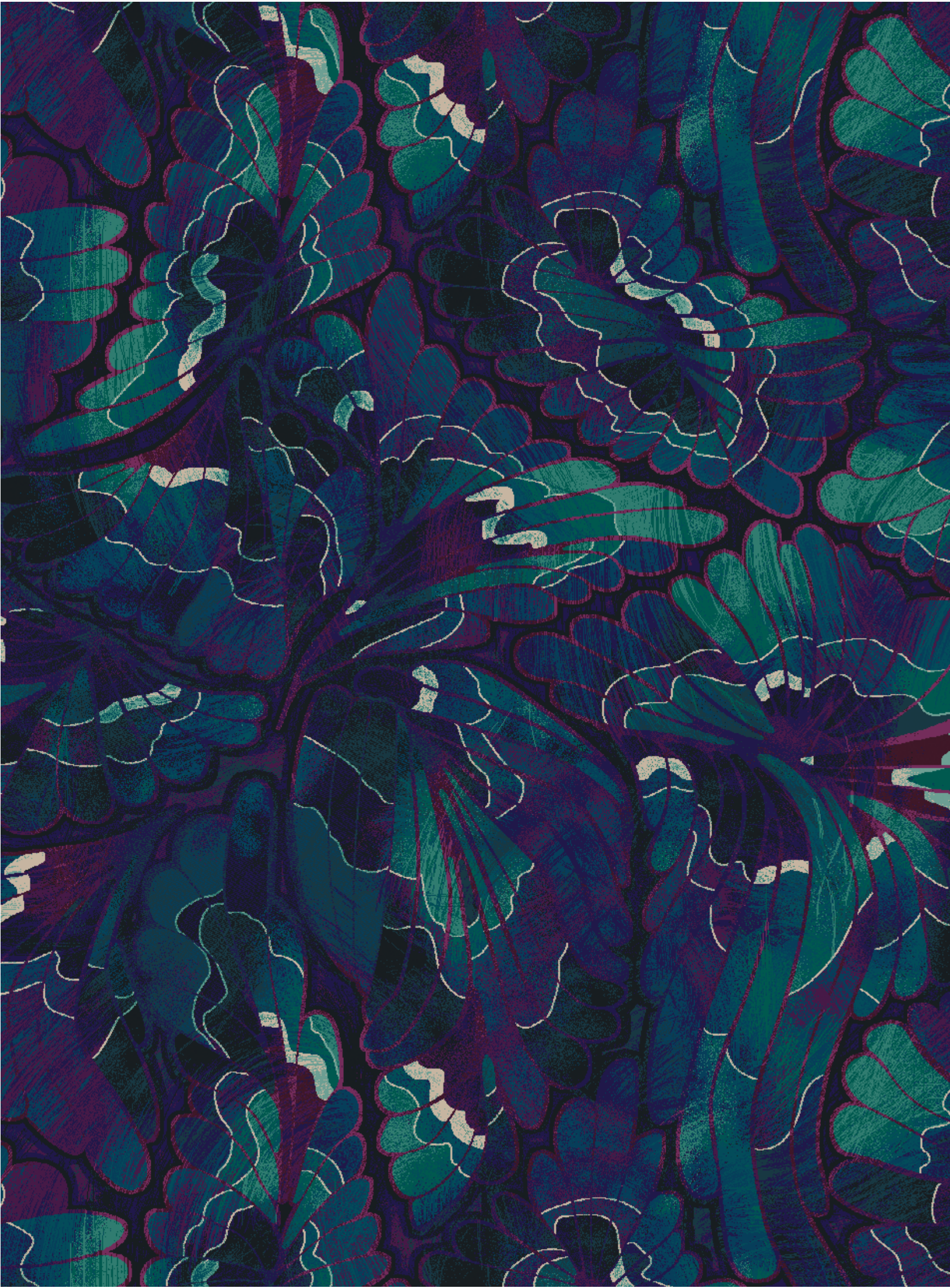
11. 23-4224

12. 23-4228

DESIGN: Q02/A043844PC  
12FT X 12FT







1.	L9564
2.	23-3763
3.	23-3773
4.	23-3273
5.	23-4224
6.	23-4228
7.	15-0071
8.	23-3033
9.	16-0079
10.	16-0053
11.	21-4251
12.	25-4254

DESIGN: Q01/A044717PC  
12FT X 12FT



“

WHILE TYPICALLY A KEYSTONE IN AN INTERIOR, SOMETIMES WE FORGET THAT OUR CARPET IS A HUMBLE COMPONENT OF A LARGER PROJECT.

IT IS IMPORTANT TO BE MINDFUL OF HOW THE CARPET HAS TO RELATE TO THE ARCHITECTURE, LIGHT FIXTURES, FURNITURE, FABRICS, ETC.

IT'S LIKE THE 'EXQUISITE CORPSE' IDEA IN THAT WE ARE CREATING ONE SMALLER PIECE AMONG OTHER UNKNOWN SMALLER PIECES. ALL THOSE THINGS COME TOGETHER FOR ONE WHOLE COHESIVE ENTITY.







# Brintons

making the world a more beautiful place

Americas  
Brintons US Axminster Inc  
Tel: +1 678 594 9300  
Fax: +1 678 594 9301  
Email: [brintons@brintonsusa.com](mailto:brintons@brintonsusa.com)

EMEA  
Brintons Carpets Ltd  
Tel: +44 (0) 1562 634 884  
Fax: +44 (0) 1562 634 517  
Email: [solutions@brintons.co.uk](mailto:solutions@brintons.co.uk)

APAC  
Brintons Pty Ltd  
Tel: +61 03 9676 3333  
Fax: +61 03 9676 3377  
Email: [enquires@brintons.com.au](mailto:enquires@brintons.com.au)

[www.brintons.net](http://www.brintons.net)

© Copyright Brintons Carpets Limited 2019. All copyright and intellectual property rights existing in our designs are and will remain the property of Brintons Carpets Limited. Any infringement upon those rights will be pursued vigorously. Colors are reproduced within the limits of the printing process.