



**ARDEN TRACE**

— by —

**Brintons**

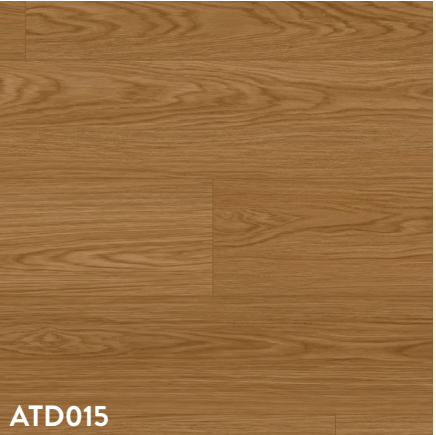
A LUXURY RESILIENT FLOORING COLLECTION



# ARDEN TRACE DELUX

Tapping in to the natural patterns of the world’s forests,  
Arden Trace by Brintons brings the hidden grains of ancient  
trees to luxury resilient flooring.

7mm x 7” x 48” | 20mil Wear Layer | 10 Year Warranty









# ARDEN TRACE PREMIUM

7mm x 9” x 72” | 20mil Wear Layer | 10 Year Warranty



ATP003



ATP004



ATP005



ATP006



ATP007



ATP008



ATP009



ATP010



ATP011



ATP012



ATP007 | ARDEN TRACE - PREMIUM

Actual product color may vary from the images shown.

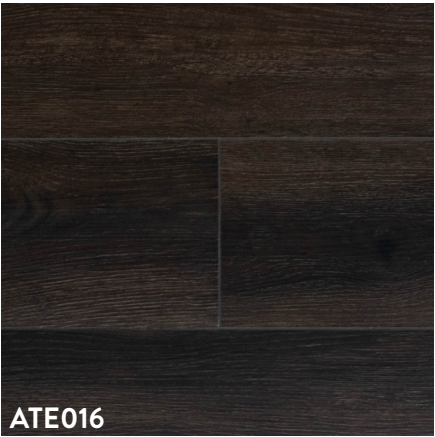






# ARDEN TRACE ECHO

5mm x 7.2” x 48” | 20mil Wear Layer | 10 Year Warranty







ATE017



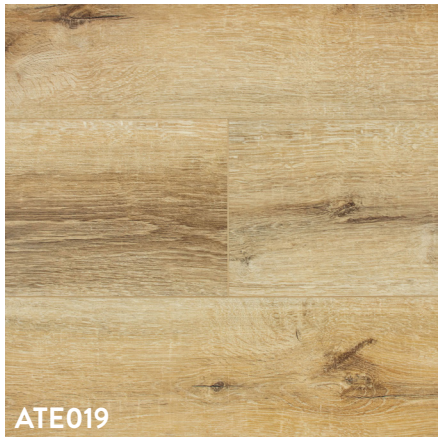
ATE021



ATE018



ATE022



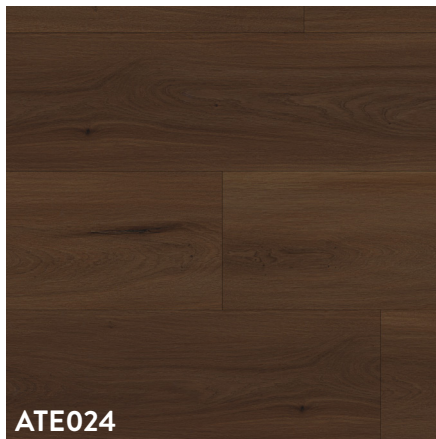
ATE019



ATE023



ATE020



ATE024

Actual product color may vary from the images shown.



ATE003 | ARDEN TRACE - ECHO



Why Brintons?

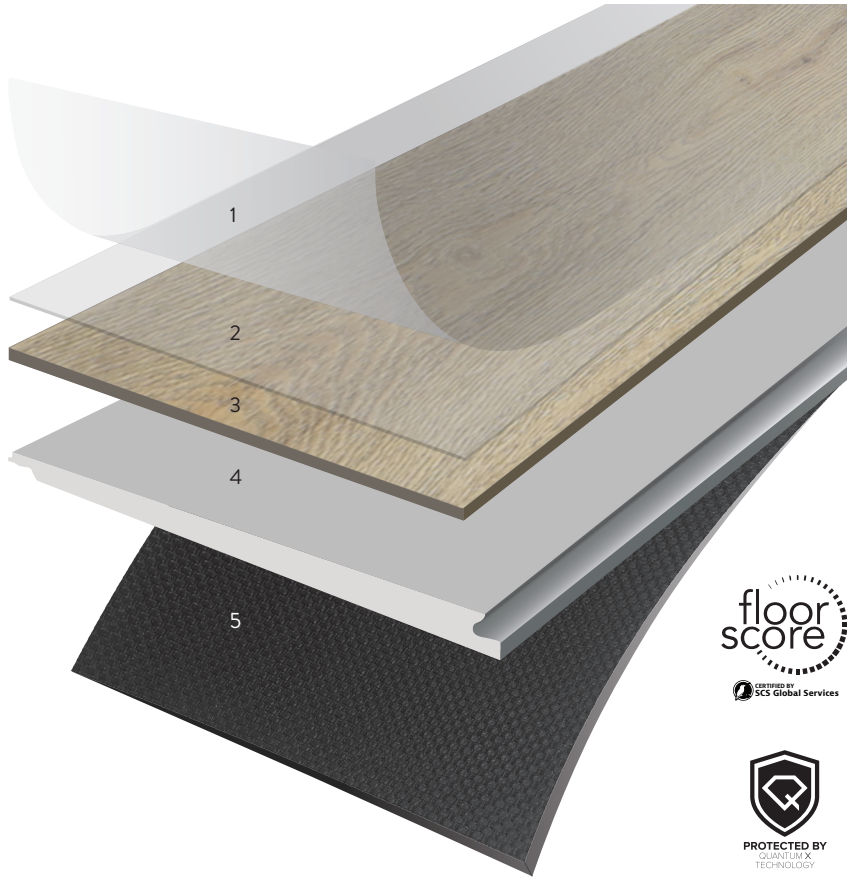
Steeped in heritage, the global luxury brand is a trusted name in the soft flooring world. Arden Trace offers the opportunity to specify hard flooring with the confidence of Brintons’ service and experience. This SPC technology gives you the feelings of natural wood while adding a strong protective layer for wear resistance. Engineered to be waterproof and undeniably durable, Arden Trace is suitable for any application where resilient floors are desired.

What is SPC?

(n) stone • plastic • composite

A 100% waterproof engineered luxury vinyl plank using advanced technology to mimic natural wood and stone with a higher durability.

- 1. **UV Layer** - protects against fading from direct sunlight and harsh chemicals
- 2. **Wear Layer** - 20 mil wear layer for added security to help prevent scratches and scuffs with Quantum X Technology
- 3. **Decor Layer** - unique texturized design giving life to the product
- 4. **SPC Core** - Stone composite layer that gives strength against indentation and adds stability even in direct sunlight
- 5. **Attached Pad** - 1mm IXPE pad which provides sound absorption and comfort under foot



| TECHNICAL DATA: |                     |                     |                     |
|-----------------|---------------------|---------------------|---------------------|
|                 | Arden Trace Delux   | Arden Trace Premium | Arden Trace Echo    |
| Spec            | SPC                 | SPC                 | SPC                 |
| Total Thickness | 7mm                 | 7mm                 | 5mm                 |
| Wear Layer      | 20mil w/ Quantum X™ | 20mil w/ Quantum X™ | 20mil w/ Quantum X™ |
| Underlayment    | 1mm IXPE (no VOC)   | 1mm IXPE (no VOC)   | 1mm IXPE (no VOC)   |
| Installation    | Float, Glue Down    | Float, Glue Down    | Float, Glue Down    |
| Plank Size      | 7mm x 7” x 48”      | 7mm x 9” x 72”      | 5mm x 7.2” x 48”    |
| Planks/Carton   | 6                   | 4                   | 10                  |
| SF/Carton       | 14.1825             | 17.67               | 24.028              |
| Cartons/Pallet  | 60                  | 52                  | 55                  |
| SF/Pallet       | 850.95              | 918.84              | 1321.54             |

Actual product color may vary from the images shown.





**Brintons Americas**

175 Townpark Drive  
Suite 140  
Kennesaw, GA 30144  
678 594 9300

For more information, get in touch with your local rep at  
[www.brintons.net/contacts](http://www.brintons.net/contacts)

© Copyright Brintons Carpets Limited 2023. All copyright, design rights, and intellectual property rights existing in our designs are and will remain the property of Brintons Carpets Limited. Any infringement upon those rights will be pursued vigorously. Colors are reproduced within the limits of the printing process.