

TIMOROUS BEASTIES by

Brintons



first weave™

First Weave plays on scale with designs that challenge repeat. Compositions which are balanced without using symmetry whilst exploiting the technical difficulties of interpreting detail into a woven carpet.

Many of the carpet designs have taken images from the outside world and brought them into the interior. The carpets have been designed to use the floor to differentiate the interior space from corridor to room, from outside to inside, from public space to private, from luxurious pattern to simple relaxation.

Whether you are looking for carpet for corridors, main public spaces, guest rooms, meeting rooms or boutique entrances, we are sure that you will find something from Timorous Beasties by Brintons to inspire you.



Story One: Iguana Page 6



Story Two: Vintage Damask Page 10



Story Three: Thistle Page 30



Story Four: Leaves Page 32



Story Five: Bristol Daisy Page 44



Story Six: Tudor Rose Wood Page 46



Story Seven: Devine Moth Page 50



Story Eight: Branch Out Page 52



Story Nine: Wood Grain Page 60



Iguana

One of the more finely detailed designs, which has been brought to life by having it reproduced on a grand scale. The design has been developed from drawings by Timorous Beasties with great effect by using modern manufacturing techniques to retain the essential drawn details.

This flamboyant design is a detailed and fluid floral that challenged the ideas of beauty, incorporating a large iguana into the flowing repeat.

2-TB043



1. 24-4009

2. 3214

3. V124

3-TB043



1. 3018

2. 3028

3. 27-4039



4. MB007 5. 24-4180 6. 28-1932 7. 1981
8. 1981



4. 27-4040 5. 27-4041 6. 27-4042 7. 24-3564
8. 24-3564

I-TB043





2-TB044

8



1. 28-1932



2. 3214



3. V124



4. MB007



5. 24-4180



6. 24-4009



7. 1981

8. 1981





Vintage Damask

The Vintage Damask series of designs has been created under the influence of traditional damask fabrics. The aim of which is to create a feeling of grandure and decadence, the essence of which is portrayed perfectly through the large scale designs and selection of colour.

The Vintage Damask story is split into three:

Imperial a dramatic traditionally ostentatious design that incorporates large overlapping damasks, to maximum effect. An opulent design with a modern twist.

Barr Code mixes contemporary with traditional. The traditional damask pattern with its Middle Eastern feel is reminiscent of Persian carpets, the stripe with its obvious directional and contemporary connotations mix perfectly allowing both depth and simplicity.

Delicate is a more subtle interpretation of the damask pattern with subtle areas of the design reworked with detail to give the designs its paper thin qualities.










I-TB002

-  1. 29-1329
-  2. 20-4175
-  3. 3183
-  4. 17-0092
-  5. VI10
-  6. 17-0096
-  7. 17-0171

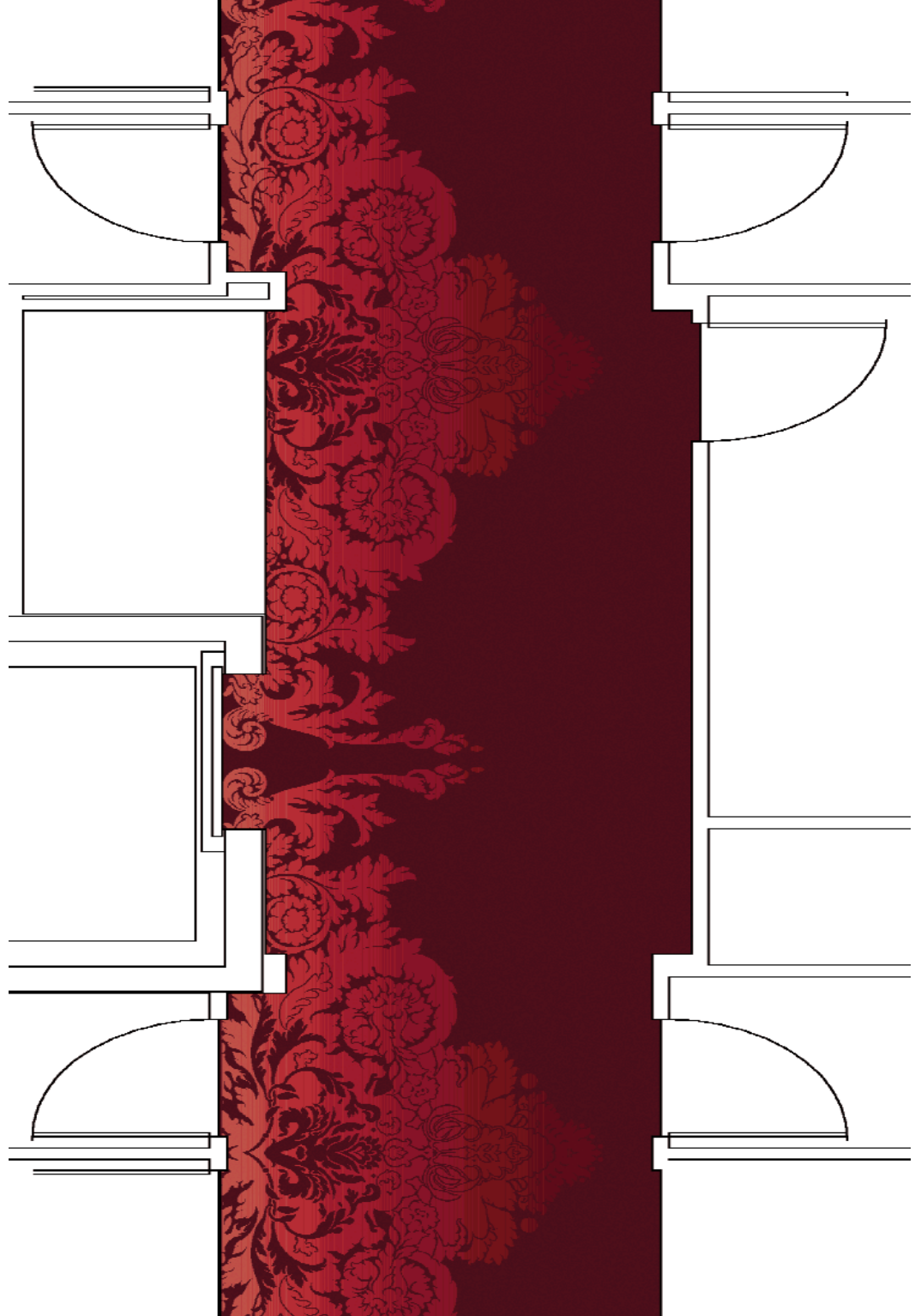


I-TB001

-  1. 29-1329
-  2. 26-1946
-  3. 26-4161
-  4. 26-2916
-  5. 26-V126
-  6. 26-3236
-  7. 26-2935



I-TB003



Half Plan I-TB002



1. 27-4091



2. MB071



3. 2509



4. 27-3275



5. 27-2551



6. 27-4090



7. 11-0268



1-TB004



2-TB004





I-TB004
Corner panel I-TB041



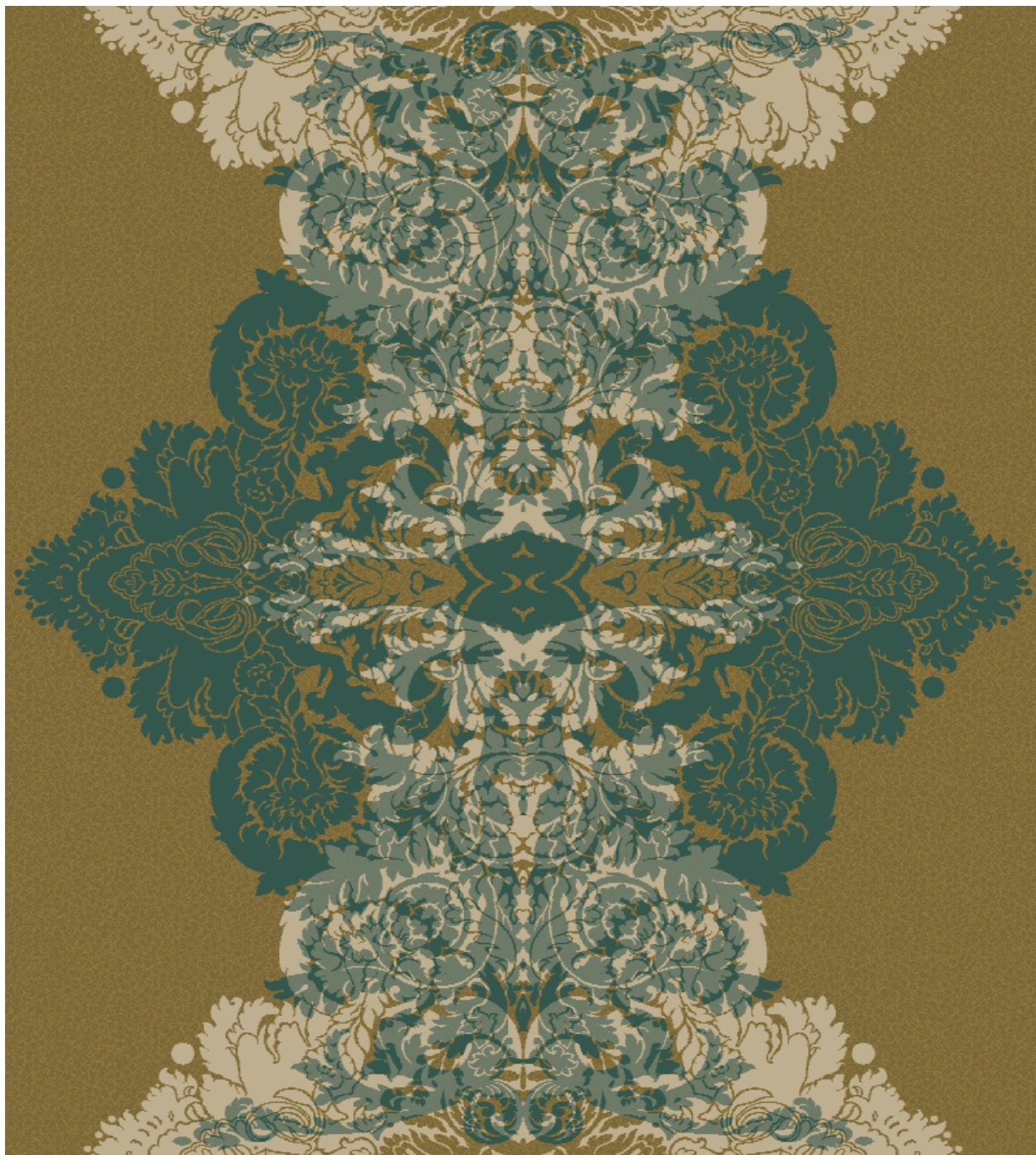
Corner panel I-TB041



1. 24-4177



2. 24-V134

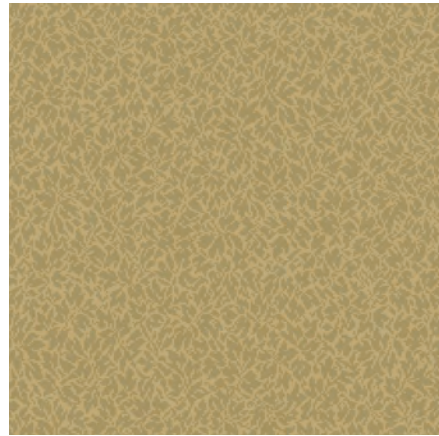


I-TB006





1-TB005



1-TB007

1. 24-MB031

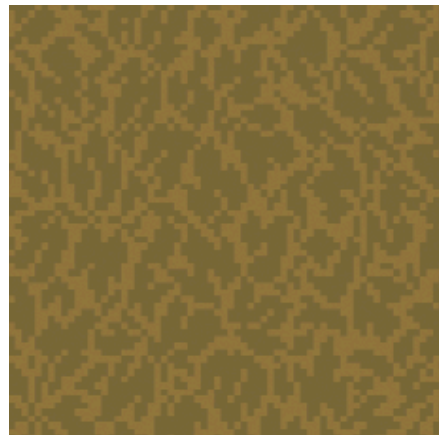
2. 18-0771



2-TB007

1. 26-1946

2. 24-4005



Close-up detail 2-TB007

1. 24-MB031 2. 26-1905 3. 24-4005 4. 24-4007 5. 18-0771



2-TB005






- 1. 17-0103
- 2. 24-4008
- 3. 24-4009
- 4. 28-4083
- 5. 18-0734



3-TB005






- 1. 27-4041
- 2. 1980
- 3. 2610
- 4. 22-4000
- 5. 18-0146



-  1. 22-4061
-  2. 1975
-  3. 20-3240
-  4. 28-4019
-  5. 22-4023

4-TB005



-  1. 2513
-  2. 1938
-  3. MB072
-  4. 2916
-  5. MB072

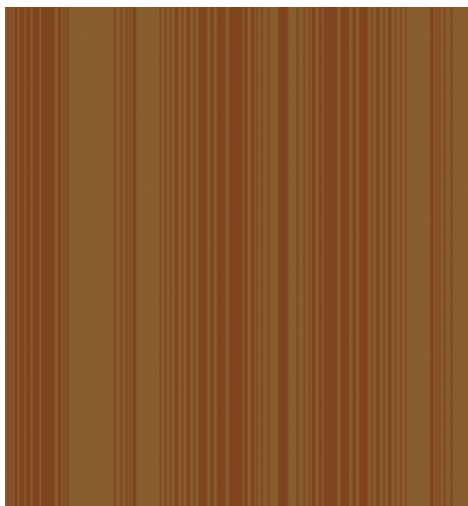
5-TB005



I-TB008



- 1. 1938
- 2. 27-4033



1-TB010

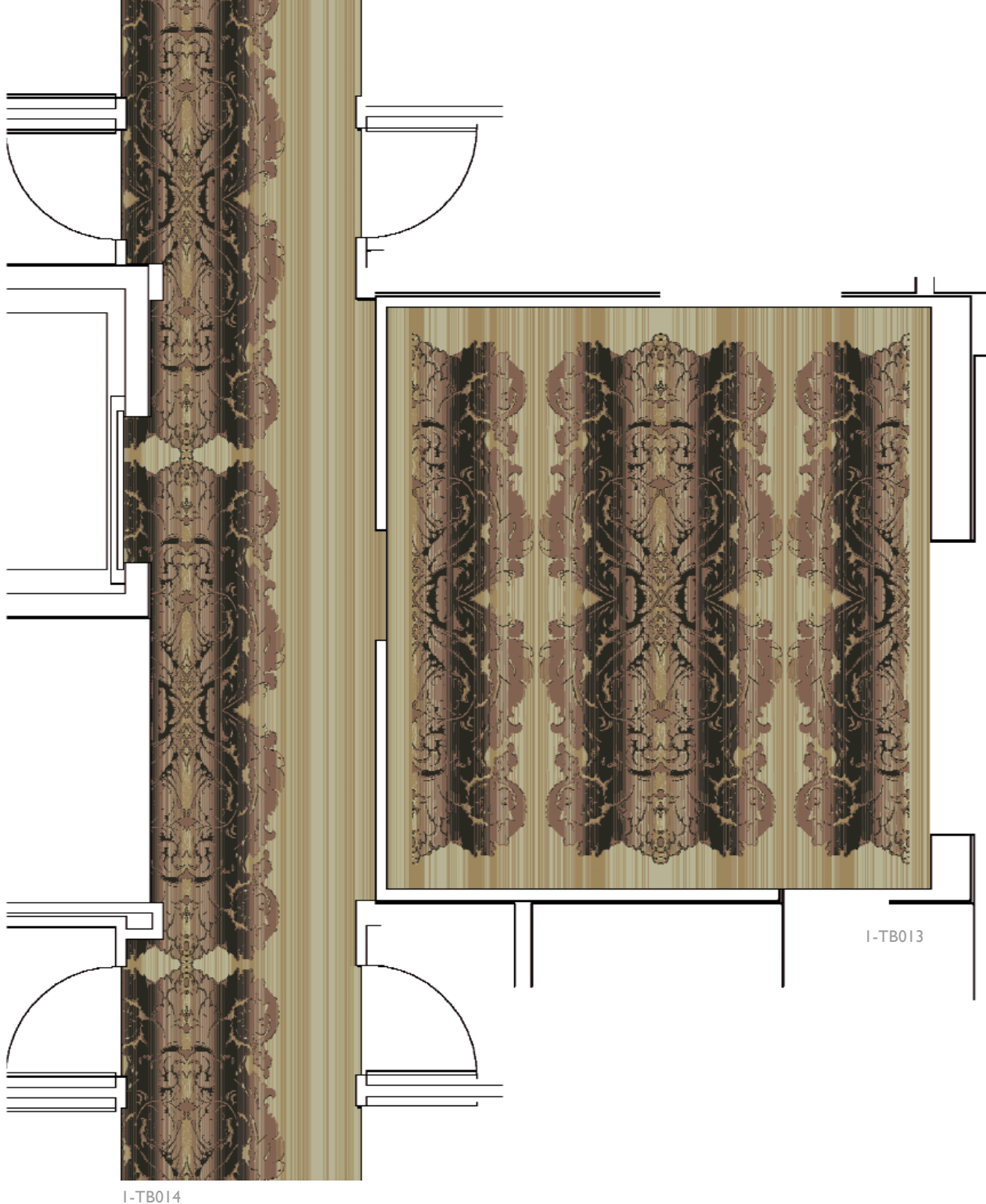
- 1. 3214
- 2. 28-4168



2-TB010



1-TB009

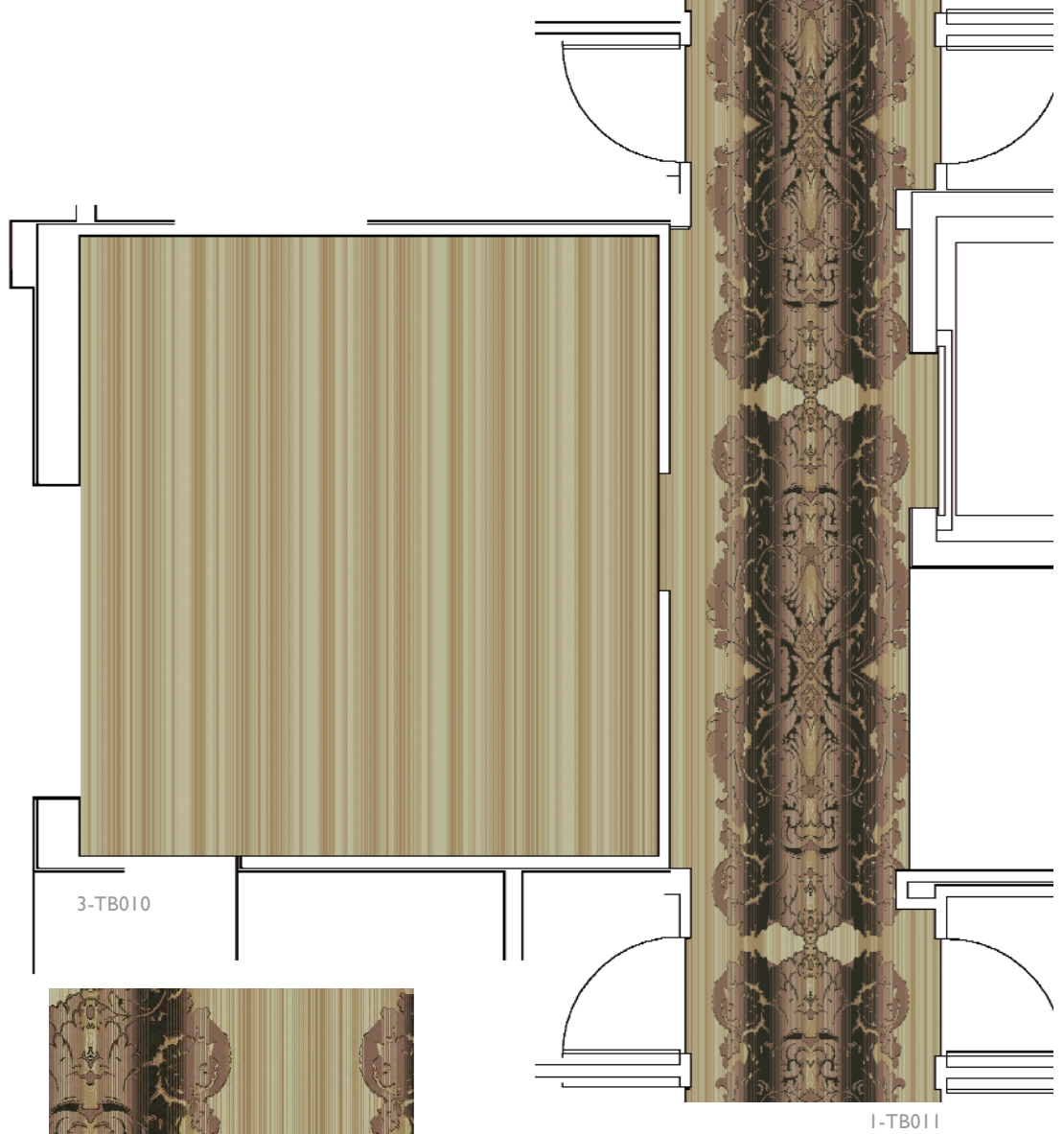


I-TB014

I-TB013



- 1. 28-4002
- 2. 18-0771



1-TB012

- 1. 28-4002
- 2. 24-4010
- 3. 18-0771
- 4. 1977



I-TB021



I-TB022







I-TB015





1-TB016

-  1.24-V24
-  2.24-4180



1-TB017

-  1.28-L9681
-  2.27-4037



4-TB010





I-TB018



I-TB020



2-TB017





Thistle

Attracted by the obvious dangerous nature and beauty of the thistle - a ferocious weed by all accounts. This design illustrates a gothic charm by simple representation.

2-TB042



1. 17-0103

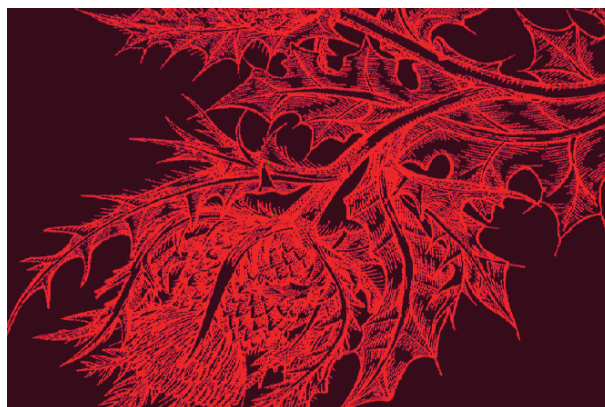


2. 24-4011



3. 23-3033

3-TB042



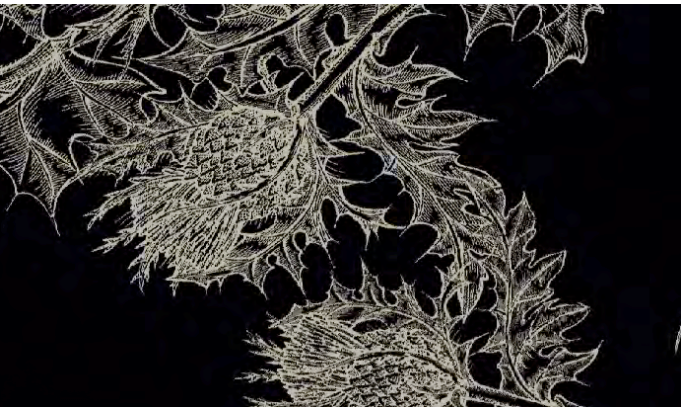
1. 21-4129



2. 21-4129



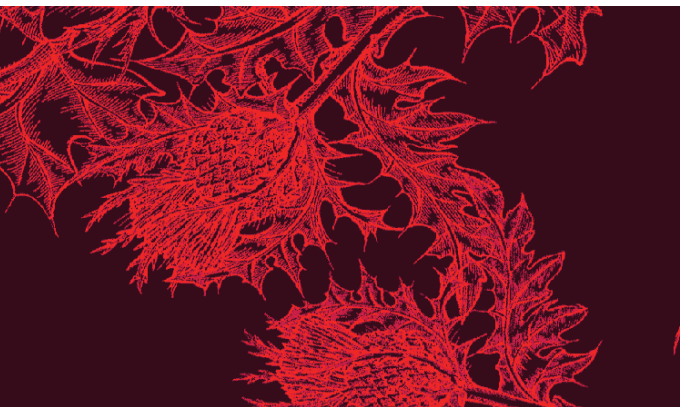
3. 11-0268



4.2610



5.23-3033



4.21-4194



5.2580

I-TB042



1.3404



2.24-V144



3.1981



4.28-1932



5.1981



Leaves

The Leaves story is split in two:

C Weed is inspired by the movement of water and the weightlessness and simplicity of flow. The designs resemble underwater foliage that has a simple, relaxed feel.

Kelp is a simple design inspired by the flow of underwater kelp, which like carpet is often seen from above.



1. V124



2. MB007



3. I981



4. 28-1932



4-TB029





I-TB029



1. V124



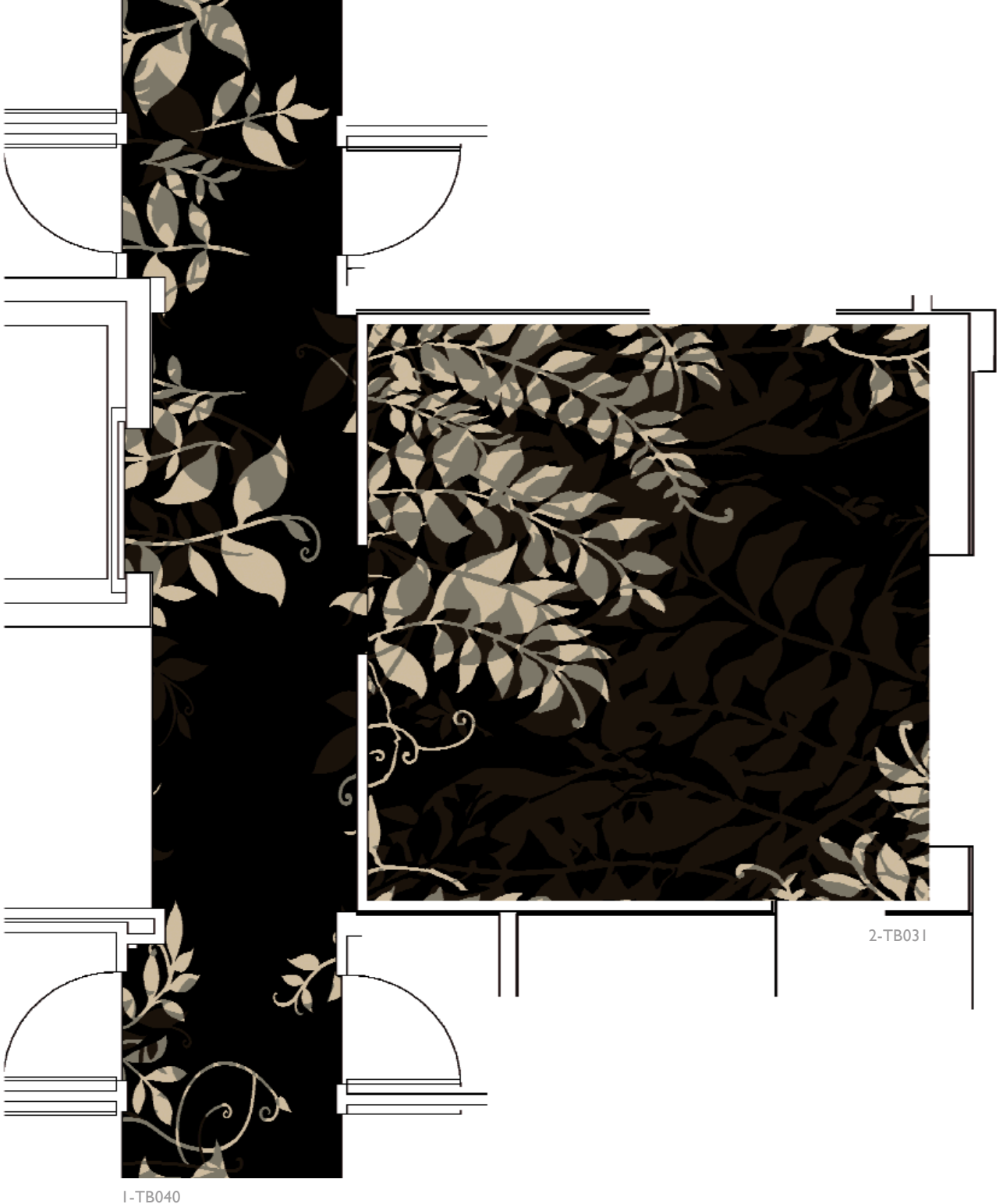
2. MB007



3. I981



4. 28-I932



1-TB040

2-TB031







2-TB029





3-TB029





1-TB032

40



1. MB007



2. 1944



3. 28-1909









4. 17-0096



5. 1985









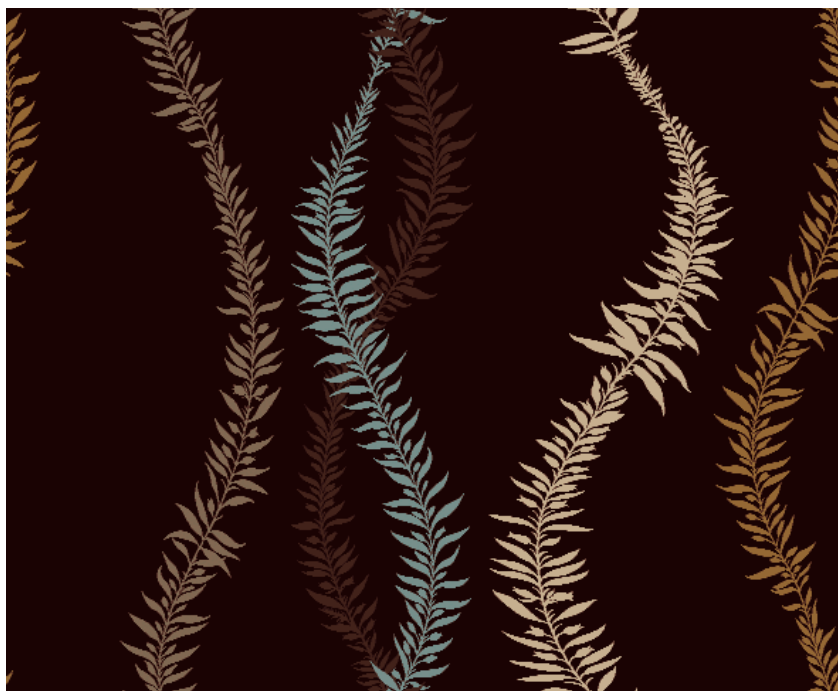
6. 27-4040

-  1. 28-1909
-  2. V68
-  3. MB007
-  4. 1985
-  5. V78
-  6. 27-4040



2-TB032

-  1. 1985
-  2. 28-1909
-  3. 28-3042
-  4. MB007
-  5. 1944
-  6. 27-4040

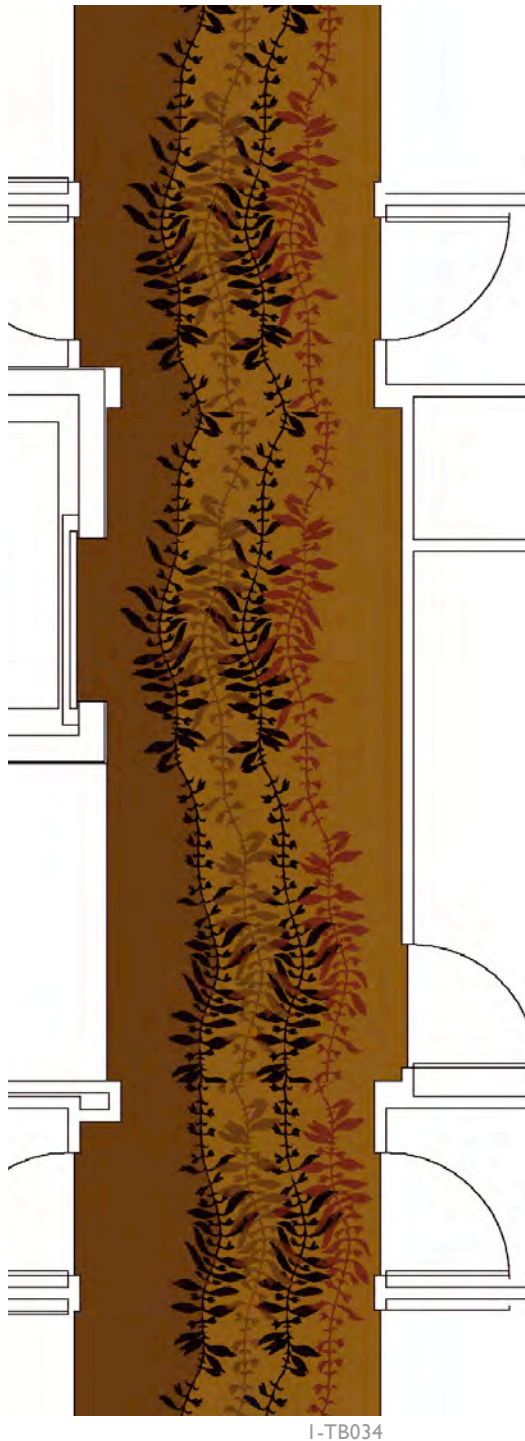


3-TB032

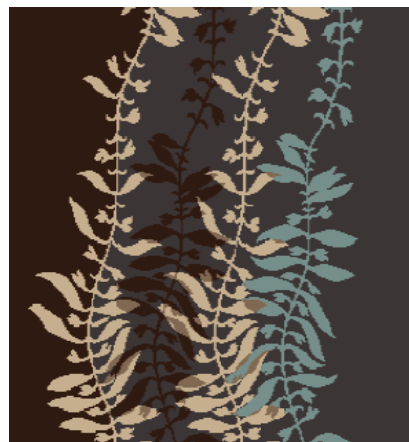


I-TB033





- 1. 1985
- 2. V68
- 3. 28-4002
- 4. 2507
- 5. 24-4005



- 1. 1918
- 2. 17-0096
- 3. MB007
- 4. 1985
- 5. 1944



- 1. 28-4003
- 2. V08
- 3. 29-1329
- 4. 28-4002
- 5. 3170

- 1. 26-2935
- 2. 13-0297
- 3. 27-4035
- 4. MB079
- 5. 18-0379









Bristol Daisy

An elaborate hybrid of floral ideas. Designed to sprawl and grow irrespective of the limitations of the walls that confine it. The scale is kept huge and the colourings deliberately simple to enhance the detail of the drawing.



2-TB045

- 1. 28-4168
- 2. 28-1909
- 3. 28-L9681
- 4. 28-4022
- 5. 28-4021
- 6. 21-4129
- 8. 21-4129
- 7. 28-V52

-  1. 29-1329
-  2. 3130
-  3. 3120
-  4. 17-0103
-  5. 24-4011
-  6. 23-3413
-  8. 23-3413
-  7. 24-3644



I-TB045

Tudor Rose Wood

Tudor Rose Wood is inspired by traditional wood blocks that were used for printing onto paper and fabric, maintaining the feel of the woodblock in the way the design has been drawn as well as the incorporation of the wood grain texture.



2-TB035

- 1. 22-4061
- 2. 28-4027
- 3. 22-4172
- 4. 28-4025
- 5. 28-1909



1-TB036

- 1. 21-4129
- 2. 21-4194
- 3. 11-0268
- 4. 21-4195



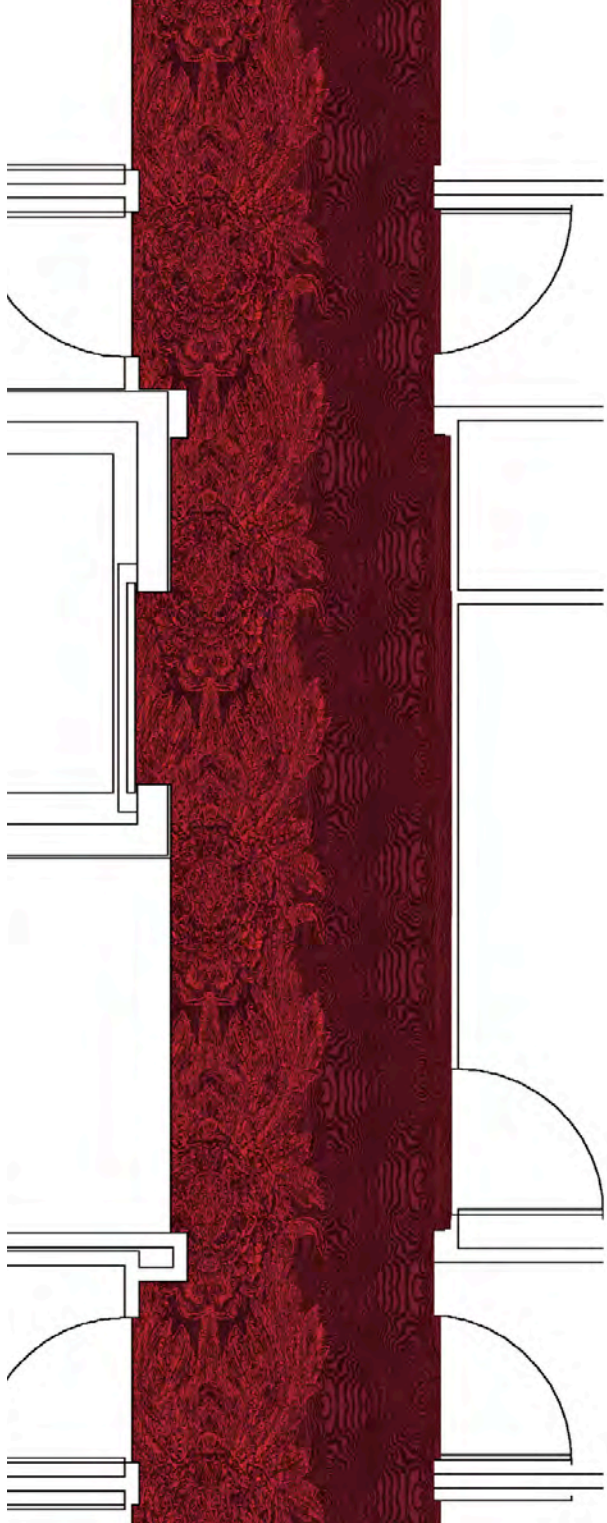
3-TB035

- 1. 1973
- 2. 29-1329
- 3. 24-4012
- 4. 2402
- 5. 2712



1-TB035

- 1. 1959
- 2. 28-4082
- 3. 27-4033
- 4. V33
- 5. 28-4075

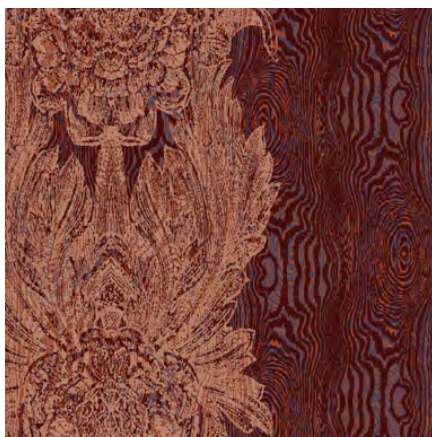


1-TB037



1-TB038

- 1. 1973
- 2. 29-1329
- 3. 24-4012
- 4. 2402
- 5. 2712



2-TB038

- 1. 1959
- 2. 28-4082
- 3. 27-4033
- 4. V33
- 5. 28-4075



3-TB038

- 1. 22-4061
- 2. 28-4027
- 3. 22-4172
- 4. 28-4025
- 5. 28-1909



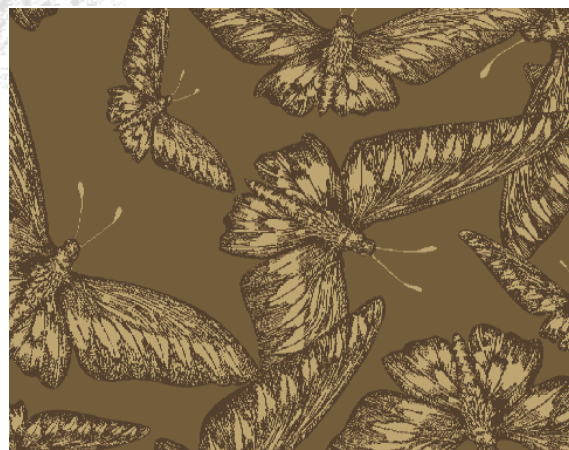
Devine Moth

This design explores the repeating nature of the single image. Using the original drawing of a single moth, enlarged to a size which creates a textural woodblock feel, in a variety of scales and compositions to create an all over chaotic feel.

2-TB046



3-TB046

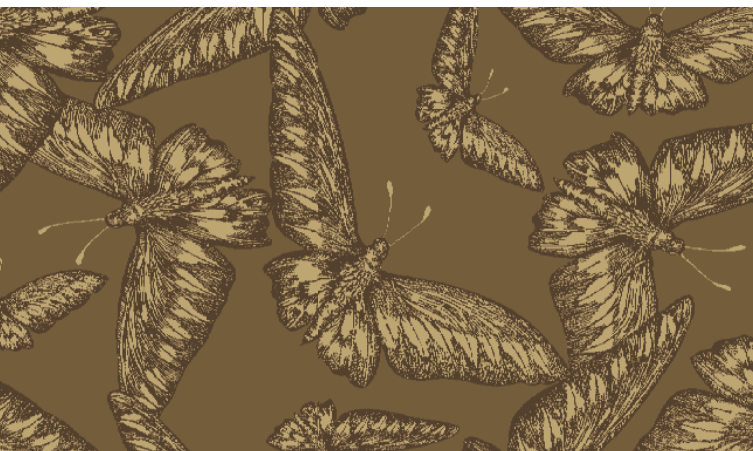




4.21-4129



5.21-4129



4.18-0771



5.24-4005



I-TB046



1.28-1932



2.18-0734



3.17-0103



4.1932



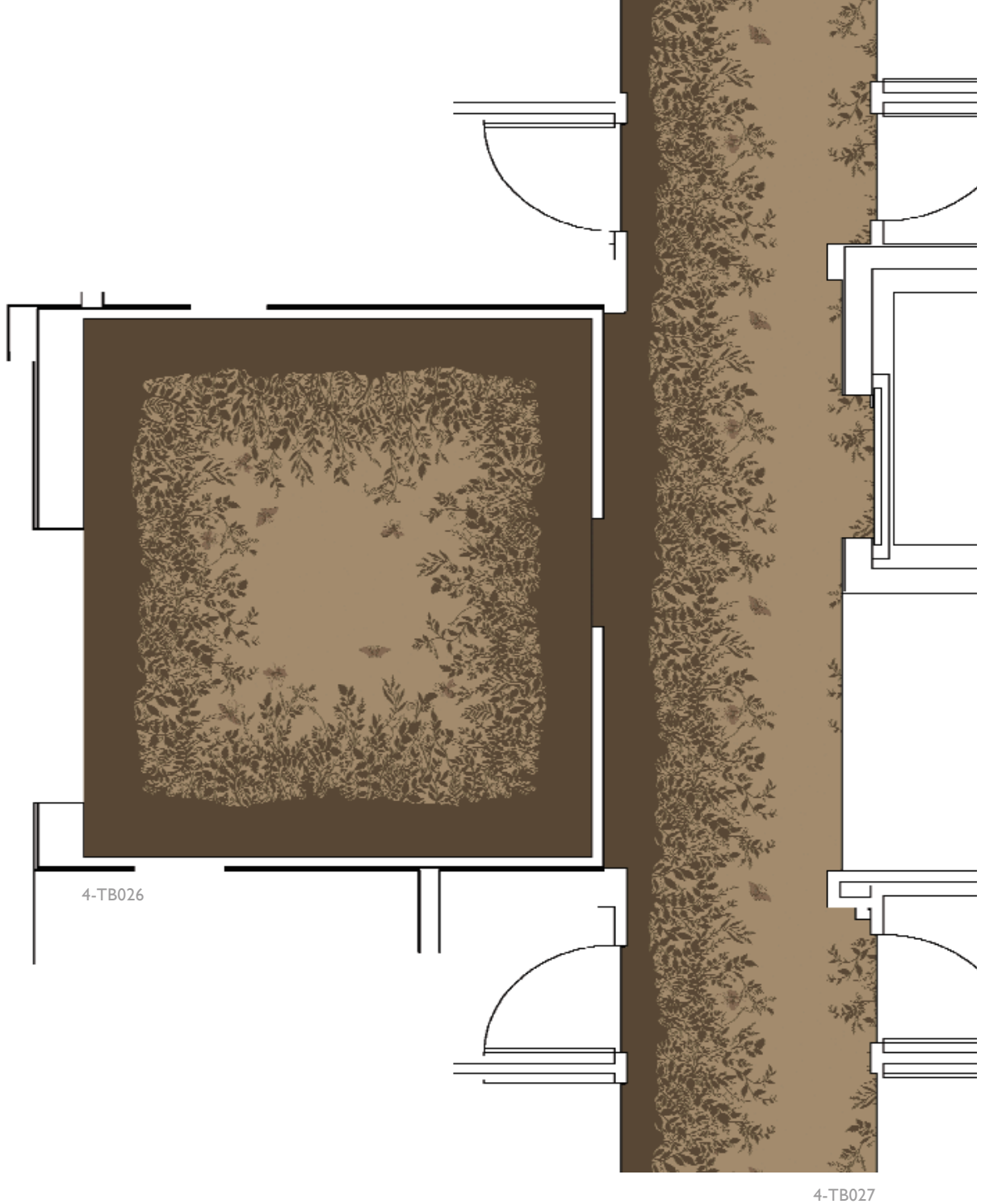
5.1932



Branch Out

Branch out has been inspired by the idea of nature being brought into the interior.

The idea is to have the design positioned against the wall so that the branches look like they are growing out from the wall, to amalgamate floor and wall, as if the pattern has a life of its own.



4-TB026





4-TB027

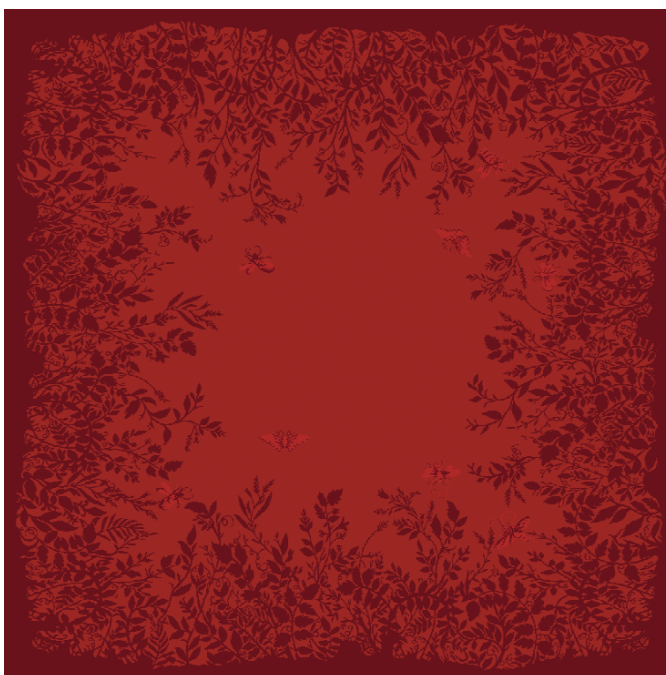


-  1. 23-4156
-  2. 23-4155
-  3. 24-4012
-  4. 24-4012

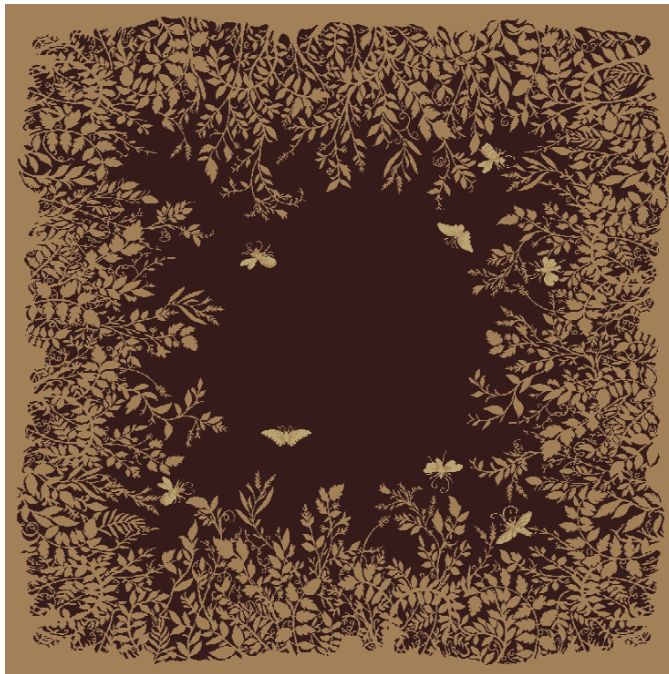


1-TB026

-  1. V91
-  2. 2531
-  3. MB100
-  4. MB100



2-TB026



3-TB026

- 1. MB033
- 2. 26-1905
- 3. 28-4168
- 4. 28-4168



4-TB026

- 1. 24-4006
- 2. 28-4003
- 3. 28-4002
- 4. 28-4002



3-TB027



1. 23-4156



2. 23-4155



3. 24-4012



4. 24-4012



4-TB027



1. 24-4006



2. 28-4003



3. 28-4002



4. 28-4002



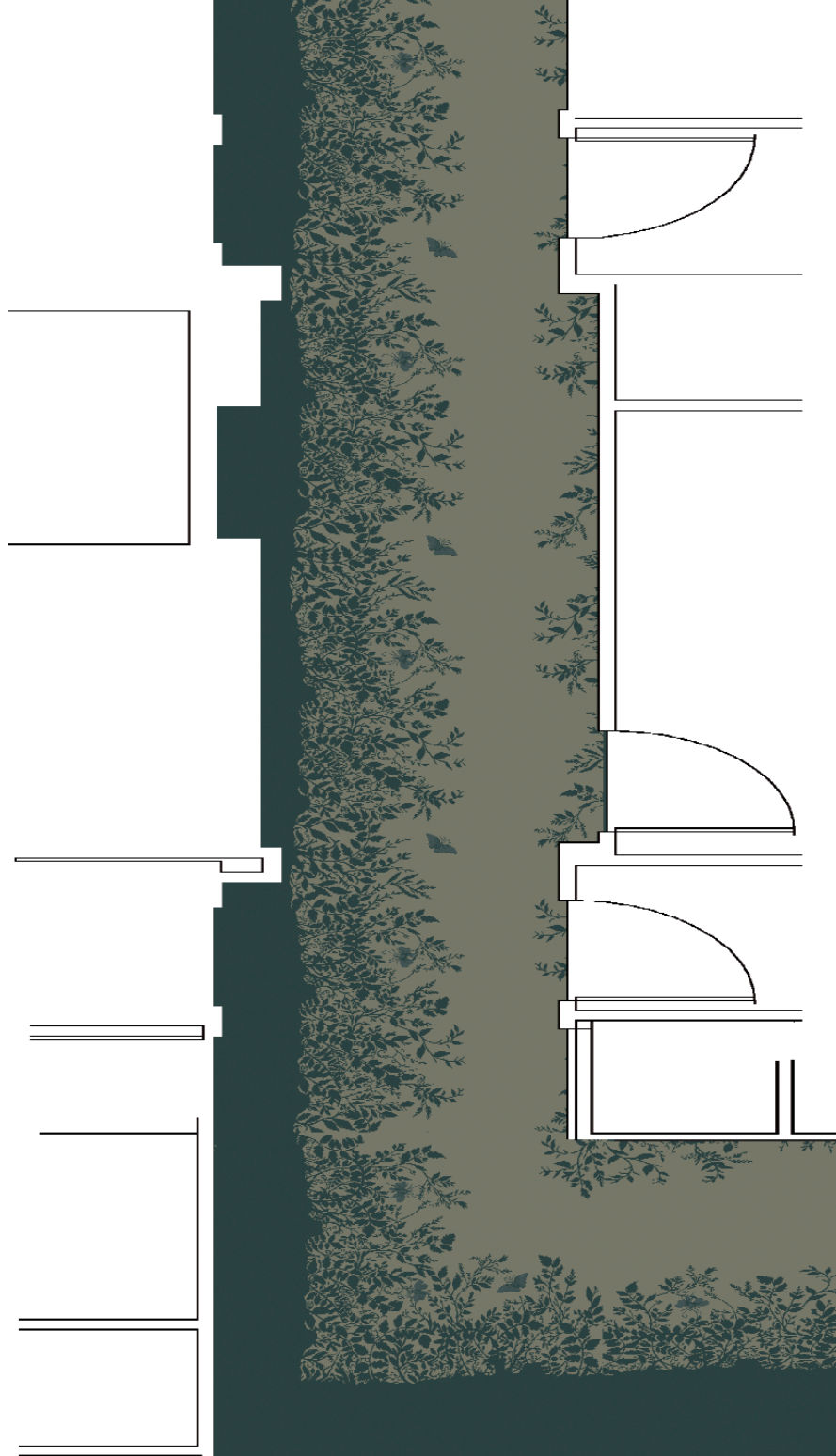


1-TB027 1-TB028 Corner panel



2-TB027 2-TB028 Corner panel





3-TB027 3-TB028 Corner panel



1. 23-4156



2. 23-4155



3. 24-4012



4. 24-4012

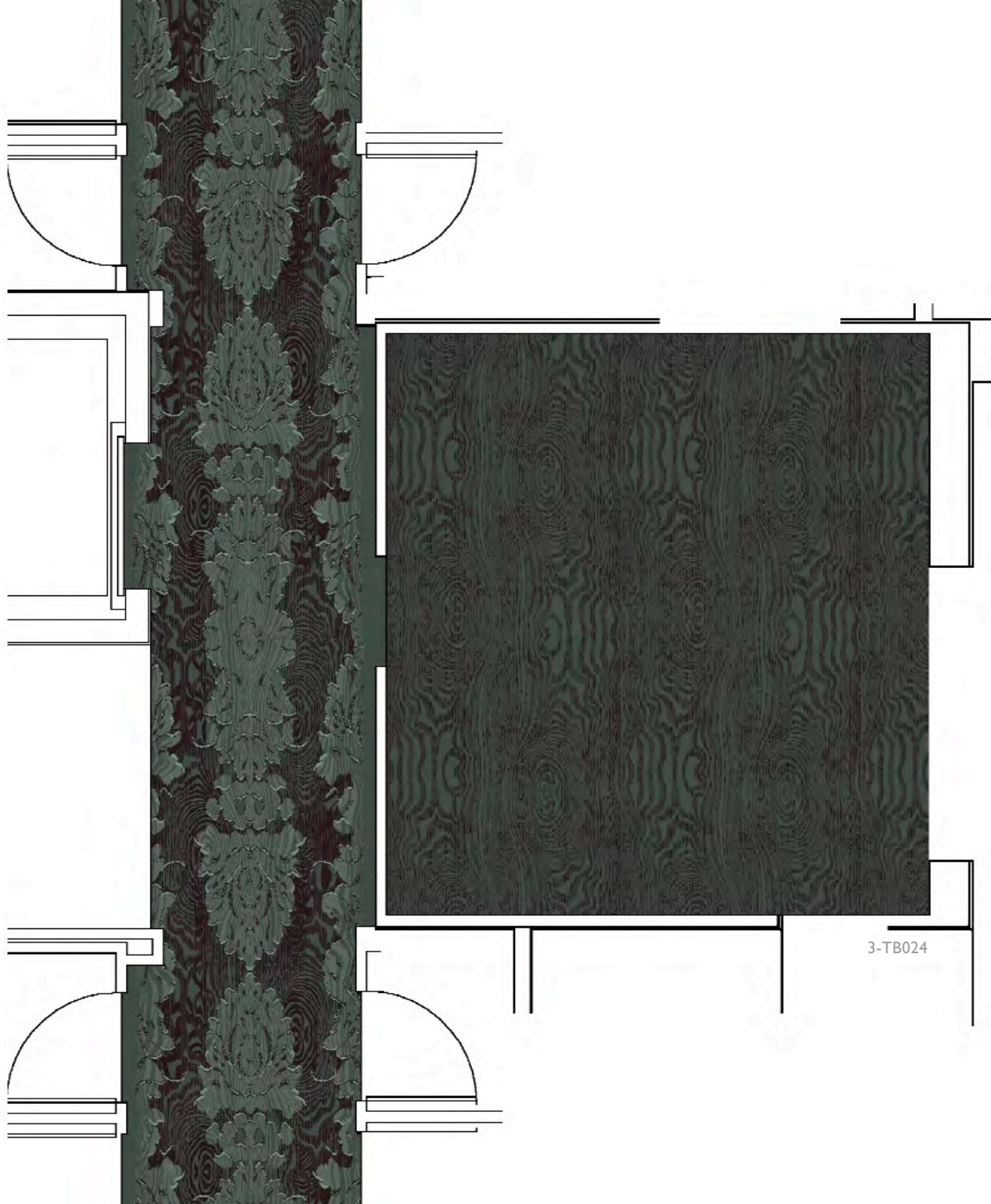
Wood Grain

Wood grain is designed to bring familiarity and warmth to the interior.

The idea was to design a carpet using inspiration from the materials often associated with the floor; in this case wooden floor boards.

Mixing together the idea with kilim carpets that are so often scattered over bare floorboards to give this design its "Bohemian" look.





4-TB023

3-TB024





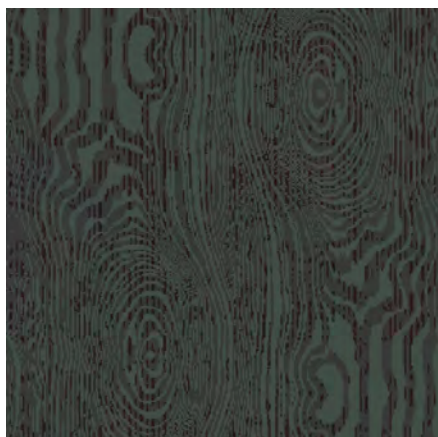
1-TB024

- 1. 3214
- 2. 28-4168
- 3. 27-4033



2-TB024

- 1. 24-4010
- 2. 1977
- 3. 1981



3-TB024

- 1. 24-4009
- 2. 28-1932
- 3. 3214



2-TB023

- 1. 1920
- 2. 1938
- 3. 27-4033
- 4. 3214
- 5. 28-4168



I-TB023





3-TB023



1. 28-4002



2. 24-4010



3. 18-0771



4. 1977



5. 1981

| Design Number | Page | Width metres | inches | Height metres | inches | Beat Up |
|---------------|------|-----------------|-----------|------------------|------------|---------|
| 1-TB001 | 12 | 4m 0.59cm | 13' 1.71" | 4m 79.78cm | 15' 8.89" | 9 row |
| 1-TB002 | 13 | 4m 0.59cm | 13' 1.71" | 4m 79.78cm | 15' 8.89" | 9 row |
| 1-TB003 | 12 | 4m 0.59cm | 13' 1.71" | 4m 79.78cm | 15' 8.89" | 9 row |
| 1-TB004 | 14 | 4m 0.59cm | 13' 1.71" | 4m 79.78cm | 15' 8.89" | 9 row |
| 1-TB005 | 17 | 2m 0.30cm | 6' 6.86" | 4m 79.78cm | 15' 8.89" | 9 row |
| 1-TB006 | 16 | 4m 0.59cm | 13' 1.71" | 4m 79.78cm | 15' 8.89" | 9 row |
| 1-TB007 | 17 | 91.44cm | 3' | 75.64cm | 2' 5.78" | 9 row |
| 1-TB008 | 20 | 1m 0.15cm | 3' 3.43" | 1m 80.09cm | 3' 6.56" | 9 row |
| 1-TB009 | 21 | 1m 0.15cm | 3' 3.43" | 1m 80.09cm | 3' 6.56" | 9 row |
| 1-TB010 | 21 | 1m 0.15cm | 3' 3.43" | 1m 0.19cm | 3' 3.44" | 9 row |
| 1-TB011 | 23 | 2m 0.30cm | 6' 6.86" | 3m 32.46cm | 10' 10.89" | 9 row |
| 1-TB012 | 23 | 2m 0.30cm | 6' 6.86" | 3m 32.46cm | 10' 10.89" | 9 row |
| 1-TB013 | 22 | 3m 65.76cm | 12' | 3m 66.04cm | 12' 0.11" | 9 row |
| 1-TB014 | 22 | 2m 0.30cm | 6' 6.86" | 3m 30.76cm | 10' 10.22" | 9 row |
| 1-TB015 | 25 | 2m 0.30cm | 6' 6.86" | 2m 16.46cm | 7' 1.22" | 9 row |
| 1-TB016 | 26 | 1m 0.15cm | 3' 3.43" | 2m 15.62cm | 7' 0.89" | 9 row |
| 1-TB017 | 26 | 1m 0.15cm | 3' 3.43" | 1m 2.45cm | 3' 4.33" | 9 row |
| 1-TB018 | 28 | 2m 0.30cm | 6' 6.86" | 6m 60.68cm | 21' 8.11" | 9 row |
| 1-TB020 | 28 | 3m 65.76cm | 12' | 3m 65.76cm | 12' | 9 row |
| 1-TB021 | 24 | 2m 0.30cm | 6' 6.86" | 3m 30.76cm | 10' 10.22" | 9 row |
| 1-TB022 | 24 | 2m 0.30cm | 6' 6.86" | 3m 32.46cm | 10' 10.89" | 9 row |
| 1-TB023 | 64 | 1m 0.15cm | 3' 3.43" | 2m 16.75cm | 7' 1.33" | 9 row |
| 1-TB024 | 63 | 1m 0.15cm | 3' 3.43" | 1m 2.45cm | 3' 4.33" | 9 row |
| 1-TB026 | 54 | 3m 0.45cm | 9' 10.29" | 3m 1.41cm | 9' 10.67" | 9 row |
| 1-TB027 | 58 | 2m 0.30cm | 6' 6.86" | 1m 88.52cm | 6' 2.22" | 9 row |
| 1-TB028 | 58 | 2m 0.30cm | 6' 6.86" | 1m 99.81cm | 6' 6.67" | 9 row |
| 1-TB029 | 35 | 2m 0.30cm | 6' 6.86" | 2m 30.86cm | 7' 6.89" | 9 row |
| 1-TB031 | 34 | 4m 0.59cm | 13' 1.71" | 3m 96.24cm | 13' | 9 row |
| 1-TB032 | 40 | 4m 28.53cm | 14' 0.71" | 2m 74.88cm | 9' 0.22" | 9 row |
| 1-TB033 | 42 | 2m 0.30cm | 6' 6.86" | 1m 99.8cm | 6' 6.67" | 9 row |
| 1-TB034 | 43 | 1m 0.15cm | 3' 3.43" | 1m 94.73cm | 6' 4.67" | 9 row |
| 1-TB035 | 47 | 2m 0.30cm | 6' 6.86" | 1m 54.66cm | 5' 0.89" | 9 row |
| 1-TB036 | 47 | 2m 0.30cm | 6' 6.86" | 1m 54.66cm | 5' 0.89" | 9 row |
| 1-TB037 | 48 | 2m 0.30cm | 6' 6.86" | 1m 54.09cm | 5' 0.67" | 9 row |
| 1-TB038 | 48 | 2m 0.30cm | 6' 6.86" | 1m 54.09cm | 5' 0.67" | 9 row |
| 1-TB039 | 36 | 2m 0.30cm | 6' 6.86" | 1m 62.68cm | 5' 3.89" | 9 row |
| 1-TB040 | 33 | 2m 0.30cm | 6' 6.86" | 7m 95.30cm | 26' 1.11" | 9 row |
| 1-TB041 | 15 | 4m 0.23cm | 13' 1.57" | 4m 1.32cm | 13' 2" | 9 row |
| 1-TB042 | 31 | 2m 0.30cm | 6' 6.86" | 5m 0.10cm | 16' 4.89" | 9 row |
| 1-TB043 | 7 | 2m 0.30cm | 6' 6.86" | 5m 0.10cm | 16' 4.89" | 9 row |
| 1-TB045 | 45 | 2m 0.30cm | 6' 6.86" | 5m 0.10cm | 16' 4.89" | 9 row |
| 1-TB046 | 51 | 2m 0.30cm | 6' 6.86" | 5m 0.10cm | 16' 4.89" | 9 row |
| 2-TB004 | 14 | 4m 0.59cm | 13' 1.71" | 4m 79.78cm | 15' 8.89" | 9 row |
| 2-TB005 | 18 | 2m 0.30cm | 6' 6.86" | 4m 79.78cm | 15' 8.89" | 9 row |
| 2-TB007 | 17 | 91.44cm | 3' | 75.64cm | 2' 5.78" | 9 row |
| 2-TB010 | 21 | 1m 0.15cm | 3' 3.43" | 1m 0.19cm | 3' 3.44" | 9 row |
| 2-TB017 | 28 | 1m 0.15cm | 3' 3.43" | 1m 2.45cm | 3' 4.33" | 9 row |
| 2-TB023 | 63 | 1m 0.15cm | 3' 3.43" | 2m 16.75cm | 7' 1.33" | 9 row |
| 2-TB024 | 63 | 1m 0.15cm | 3' 3.43" | 1m 2.45cm | 3' 4.33" | 9 row |
| 2-TB026 | 54 | 3m 0.45cm | 9' 10.29" | 3m 1.41cm | 9' 10.67" | 9 row |
| 2-TB027 | 58 | 2m 0.30cm | 6' 6.86" | 1m 88.52cm | 6' 2.22" | 9 row |
| 2-TB028 | 58 | 2m 0.30cm | 6' 6.86" | 1m 99.81cm | 6' 6.67" | 9 row |
| 2-TB029 | 38 | 2m 0.30cm | 6' 6.86" | 2m 30.86cm | 7' 6.89" | 9 row |
| 2-TB031 | 33 | 4m 0.59cm | 13' 1.71" | 3m 96.24cm | 13' | 9 row |
| 2-TB032 | 41 | 4m 28.53cm | 14' 0.71" | 2m 74.88cm | 9' 0.22" | 9 row |
| 2-TB034 | 43 | 1m 0.15cm | 3' 3.43" | 1m 94.73cm | 6' 4.67" | 9 row |
| 2-TB035 | 47 | 2m 0.30cm | 6' 6.86" | 1m 54.66cm | 5' 0.89" | 9 row |
| 2-TB038 | 48 | 2m 0.30cm | 6' 6.86" | 1m 54.09cm | 5' 0.67" | 9 row |
| 2-TB040 | 34 | 2m 0.30cm | 6' 6.86" | 7m 95.30cm | 26' 1.11" | 9 row |
| 2-TB042 | 30 | 2m 0.30cm | 6' 6.86" | 5m 0.10cm | 16' 4.89" | 9 row |
| 2-TB043 | 6 | 2m 0.30cm | 6' 6.86" | 5m 0.10cm | 16' 4.89" | 9 row |
| 2-TB044 | 8 | 4m 0.59cm | 13' 1.71" | 4m 75.26cm | 15' 7.11" | 9 row |
| 2-TB045 | 44 | 2m 0.30cm | 6' 6.86" | 5m 0.10cm | 16' 4.89" | 9 row |
| 2-TB046 | 50 | 2m 0.30cm | 6' 6.86" | 5m 0.10cm | 16' 4.89" | 9 row |
| 3-TB005 | 18 | 2m 0.30cm | 6' 6.86" | 4m 79.78cm | 15' 8.89" | 9 row |
| 3-TB010 | 23 | 1m 0.15cm | 3' 3.43" | 1m 0.19cm | 3' 3.44" | 9 row |
| 3-TB023 | 63 | 1m 0.15cm | 3' 3.43" | 2m 16.75cm | 7' 1.33" | 9 row |
| 3-TB024 | 63 | 1m 0.15cm | 3' 3.43" | 1m 2.45cm | 3' 4.33" | 9 row |
| 3-TB026 | 55 | 3m 0.45cm | 9' 10.29" | 3m 1.41cm | 9' 10.67" | 9 row |
| 3-TB027 | 56 | 2m 0.30cm | 6' 6.86" | 1m 88.52cm | 6' 2.22" | 9 row |
| 3-TB028 | 59 | 2m 0.30cm | 6' 6.86" | 1m 99.81cm | 6' 6.67" | 9 row |
| 3-TB029 | 39 | 2m 0.30cm | 6' 6.86" | 2m 30.86cm | 7' 6.89" | 9 row |
| 3-TB032 | 41 | 4m 28.53cm | 14' 0.71" | 2m 74.88cm | 9' 0.22" | 9 row |
| 3-TB034 | 43 | 1m 0.15cm | 3' 3.43" | 1m 94.73cm | 6' 4.67" | 9 row |
| 3-TB035 | 47 | 2m 0.30cm | 6' 6.86" | 1m 54.66cm | 5' 0.89" | 9 row |
| 3-TB038 | 48 | 2m 0.30cm | 6' 6.86" | 1m 54.09cm | 5' 0.67" | 9 row |
| 3-TB042 | 30 | 2m 0.30cm | 6' 6.86" | 5m 0.10cm | 16' 4.89" | 9 row |
| 3-TB043 | 6 | 2m 0.30cm | 6' 6.86" | 5m 0.10cm | 16' 4.89" | 9 row |
| 3-TB046 | 50 | 2m 0.30cm | 6' 6.86" | 5m 0.10cm | 16' 4.89" | 9 row |
| 4-TB005 | 19 | 2m 0.30cm | 6' 6.86" | 4m 79.78cm | 15' 8.89" | 9 row |
| 4-TB010 | 26 | 1m 0.15cm | 3' 3.43" | 1m 0.19cm | 3' 3.44" | 9 row |
| 4-TB023 | 62 | 1m 0.15cm | 3' 3.43" | 2m 16.75cm | 7' 1.33" | 9 row |
| 4-TB026 | 53 | 3m 0.45cm | 9' 10.29" | 3m 1.41cm | 9' 10.67" | 9 row |
| 4-TB027 | 53 | 2m 0.30cm | 6' 6.86" | 1m 88.52cm | 6' 2.22" | 9 row |
| 4-TB029 | 36 | 2m 0.30cm | 6' 6.86" | 2m 30.86cm | 7' 6.89" | 9 row |
| 4-TB034 | 43 | 1m 0.15cm | 3' 3.43" | 1m 94.73cm | 6' 4.67" | 9 row |
| 5-TB005 | 19 | 2m 0.30cm | 6' 6.86" | 4m 79.78cm | 15' 8.89" | 9 row |



BY APPOINTMENT
TO HER MAJESTY THE QUEEN
SUPPLY MANUFACTURERS
BRINTONS LIMITED, KIDDERMINSTER

Brintons

www.brintons.net

Brintons - USA
1000 Cobb Place Blvd.
Building 200 Suite 200
Bailey Park
Kennesaw, GA 30144
Tel: +1 678 594 9300
Fax: +1 678 594 9301
Email: brintons@brintonsusa.com

Brintons Limited - UK
Global Headquarters
PO Box 16
Exchange Street
Kidderminster
Worcestershire
DY10 1AG
Tel: +44 (0) 1562 635 665
Fax: +44 (0) 1562 634 737
Email: solutions@brintons.co.uk

Brintons Pty Ltd - AUS
32-36 Fellowmongers Road
Breakwater
VIC 3219
Australia
Tel: +61 3 5226 3200
Fax: +61 3 5226 3244
Email: marketing@brintons.com.au