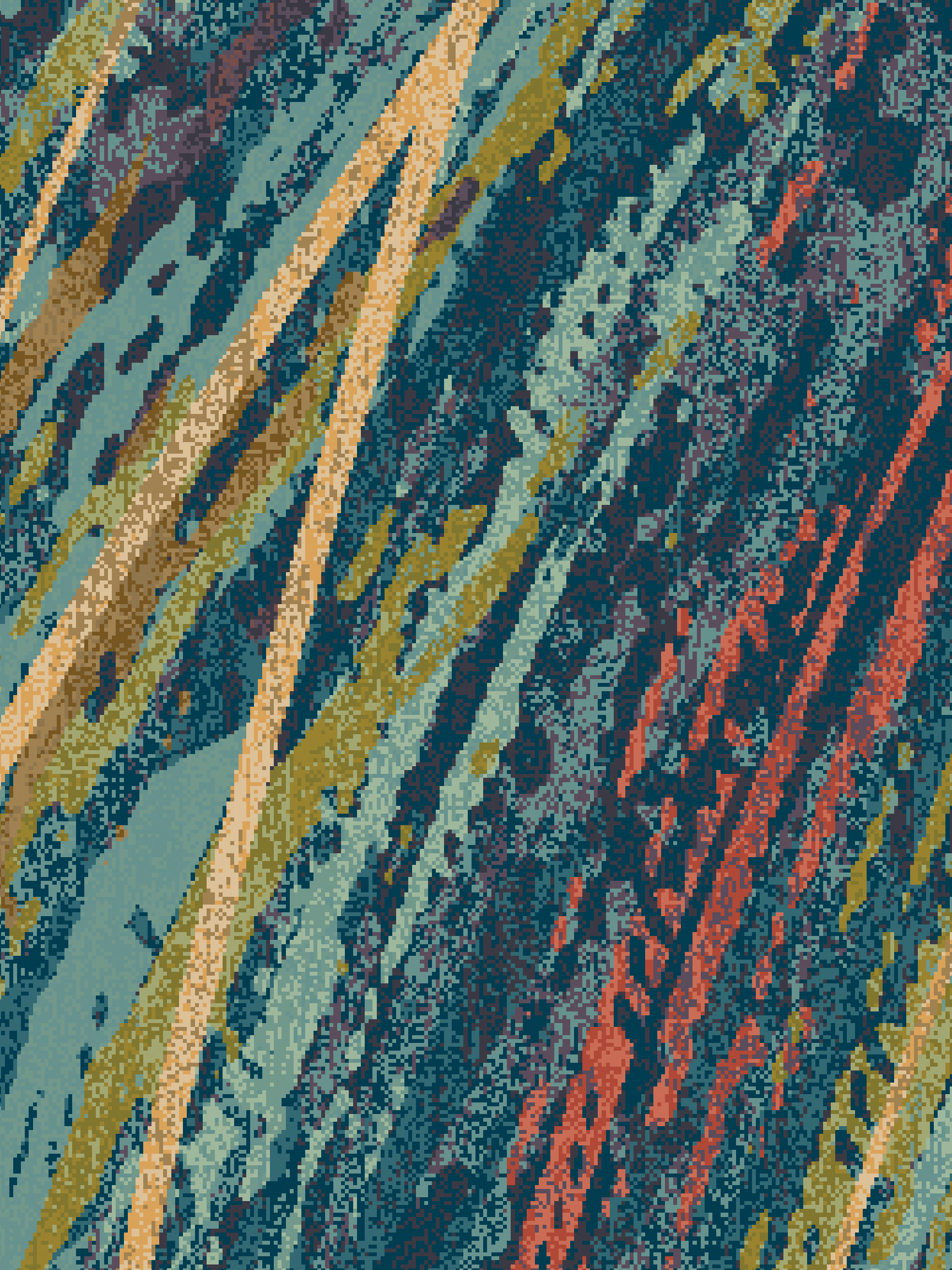




Brintons

C R E D E N C E



CREDENCE

[kreed-ns]

1. Belief that something is true; an unshakeable faith
2. The quality of being believed or accepted as something true or real
3. Credibility, credentials, confidence, trust, faith, belief, credit

For over two centuries, Brintons has consistently broken the boundaries and surpassed the expectations of the carpet design industry. This historical potency, our credence, resonates to the very core of our team.

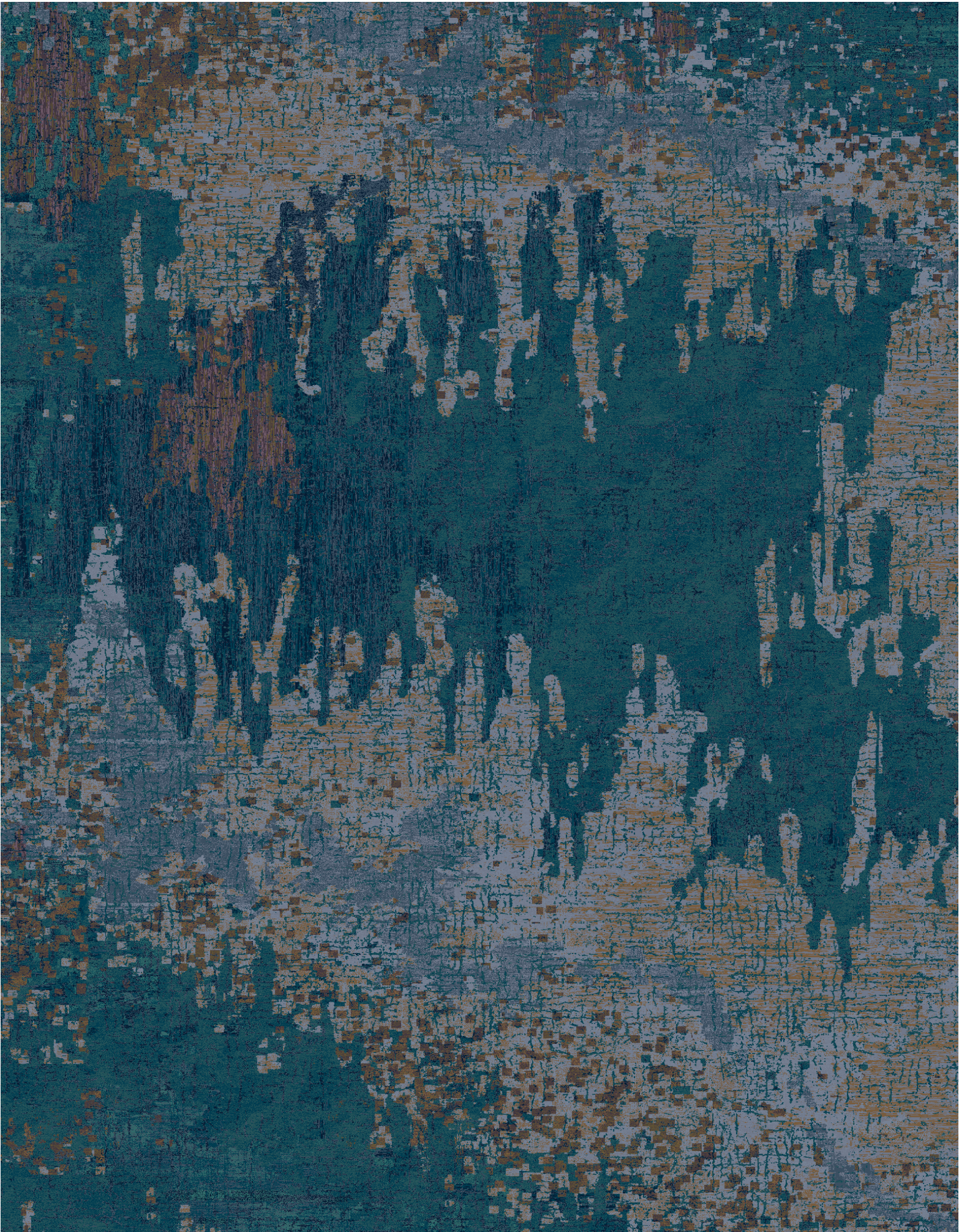
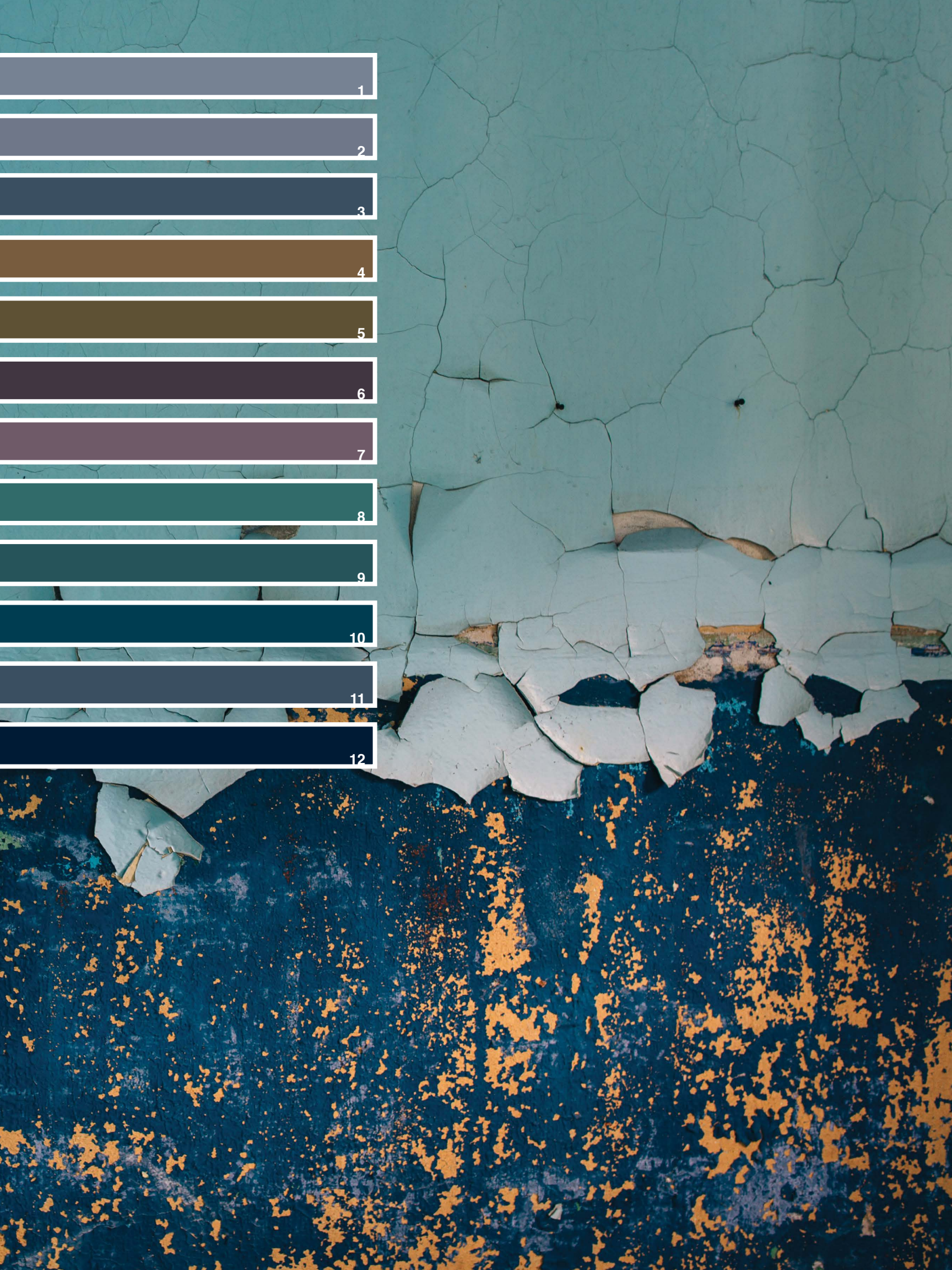
Credence pays respects to the passing of time through a diverse collection influenced by the juxtaposition of exposed surfaces. Pockets of salt water are trapped under dissipating ice, soft moss slowly grows across the face of an ancient earth, and fat paint chips from the aging canvas of an old master's work. These material binaries are poised against each other, struggling for rank, and melting together in a uniquely fluid collection of designs. This common thread of nostalgic reflection echoes through the chasms of Credence, ushering to light the narrative of material vs. element.

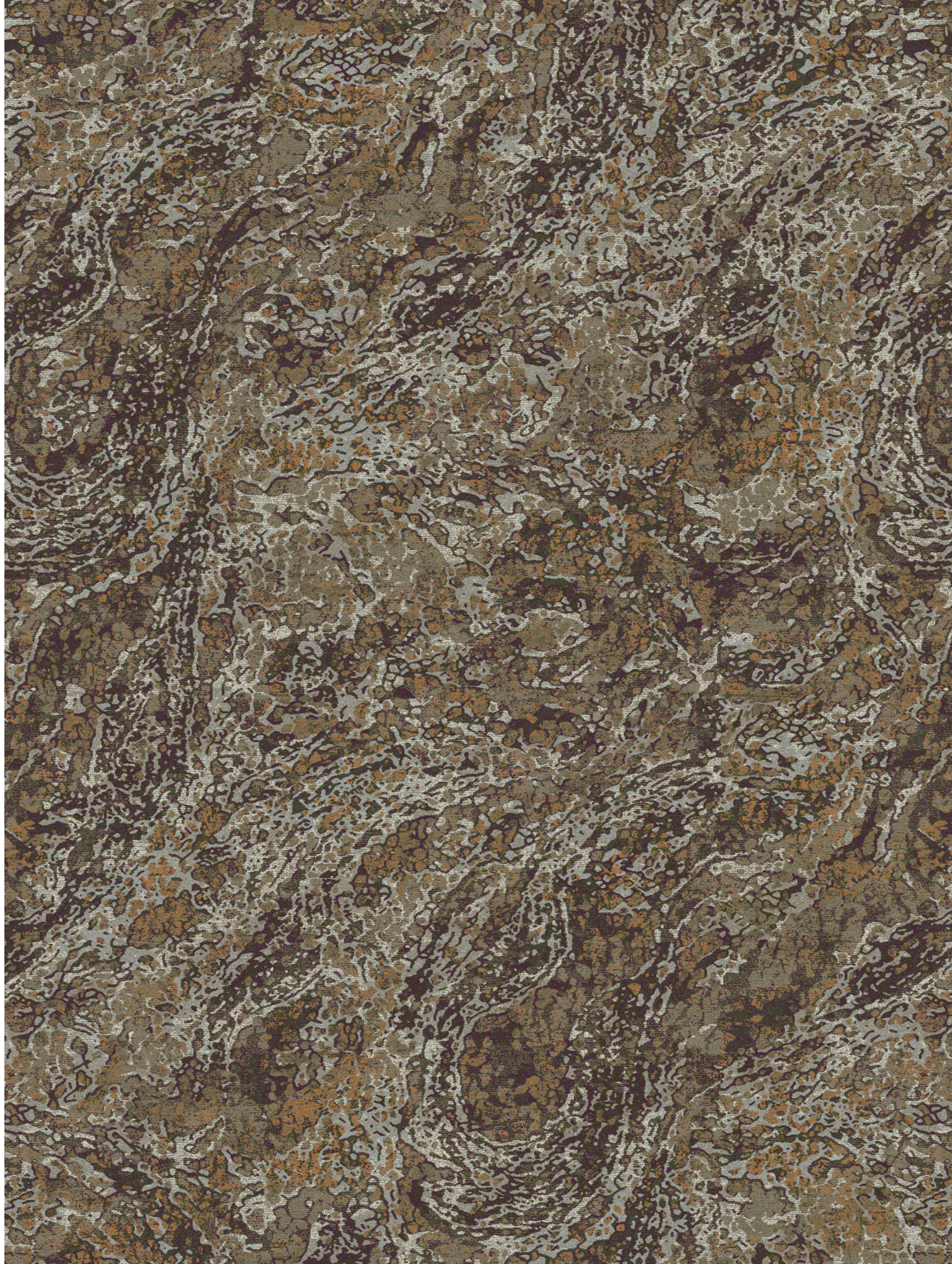
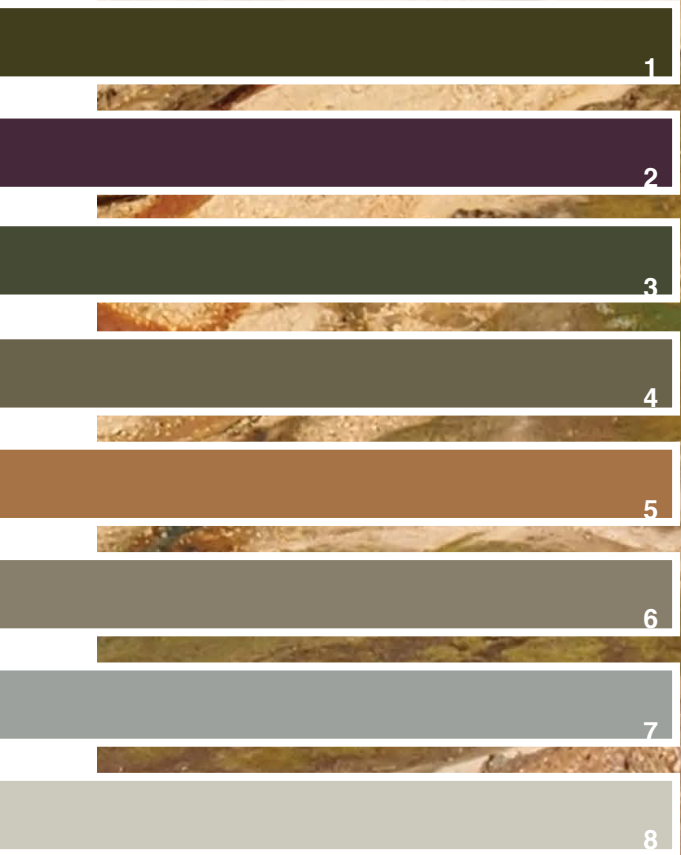
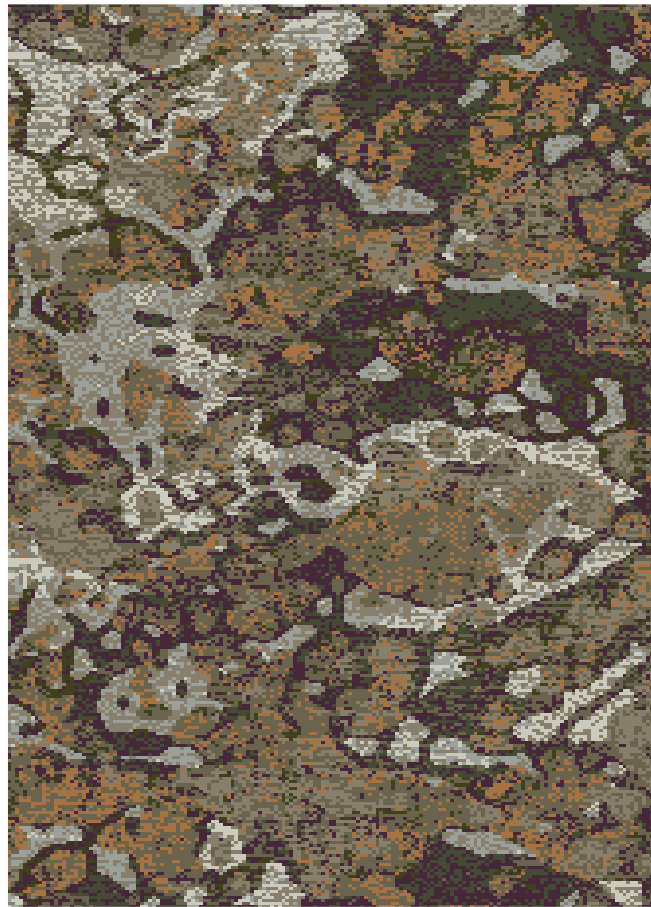
Brintons, with the steady vigor of a two hundred and thirty year old story, presents Credence: the evidence of perseverance through time's relentless forward movement.



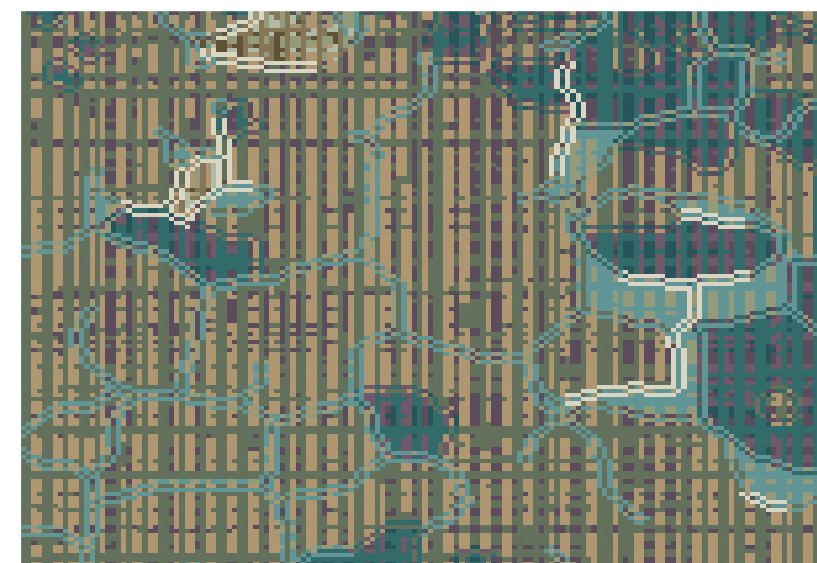
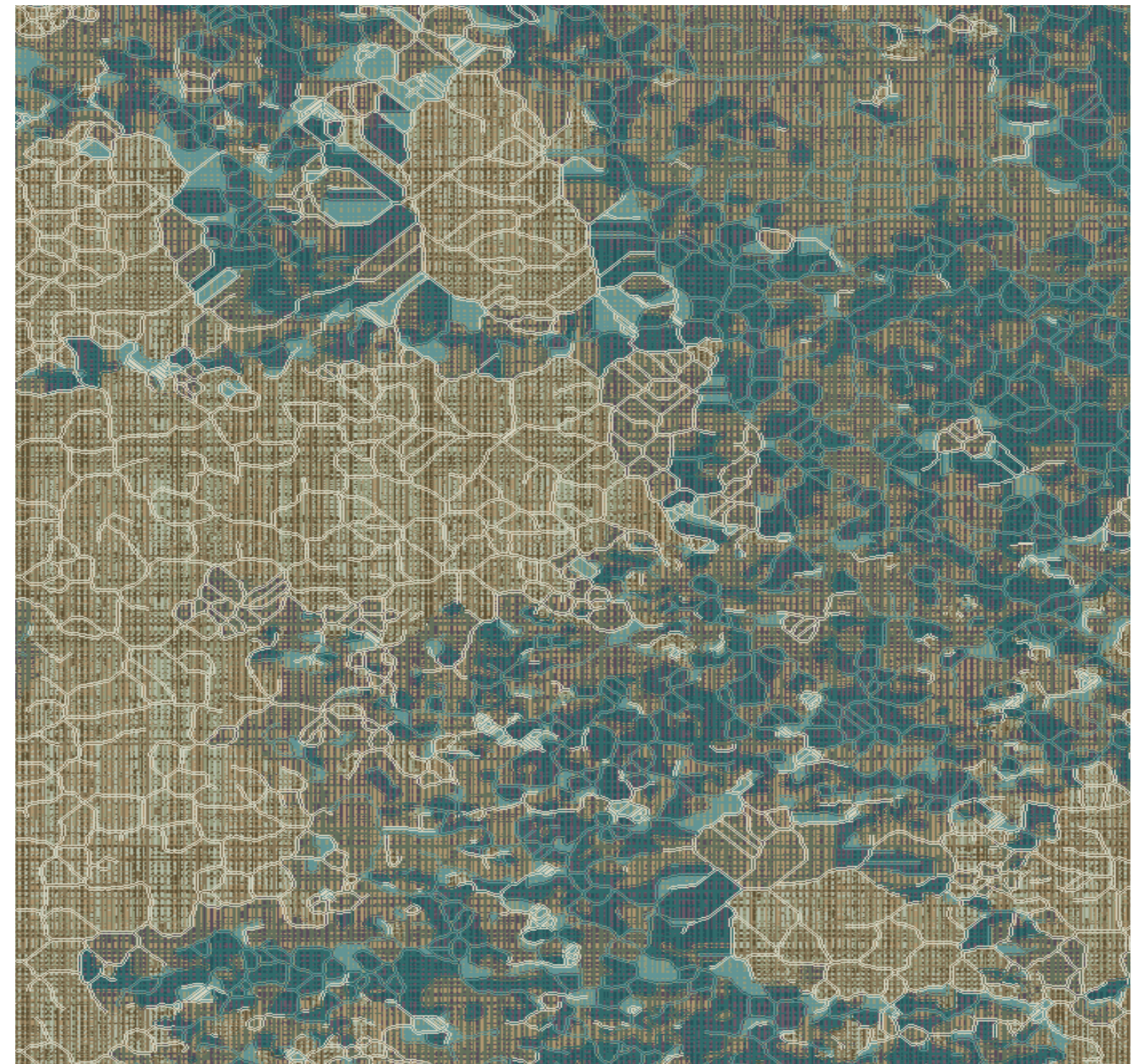
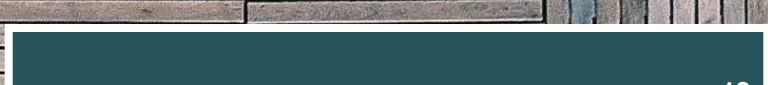
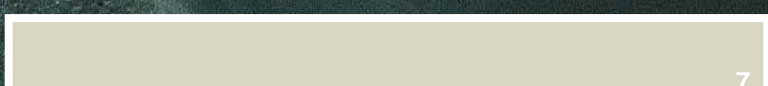
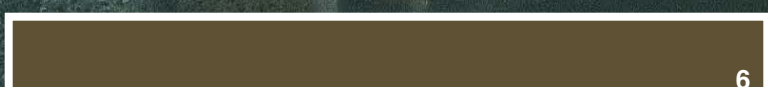
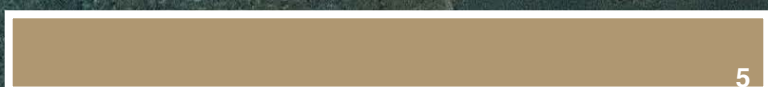
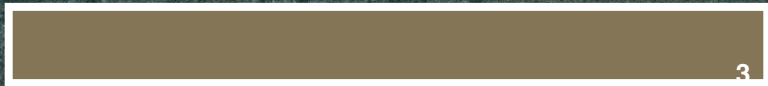
BY APPOINTMENT
TO HER MAJESTY THE QUEEN
CARPET MANUFACTURERS
SINCE 1833

Brintons

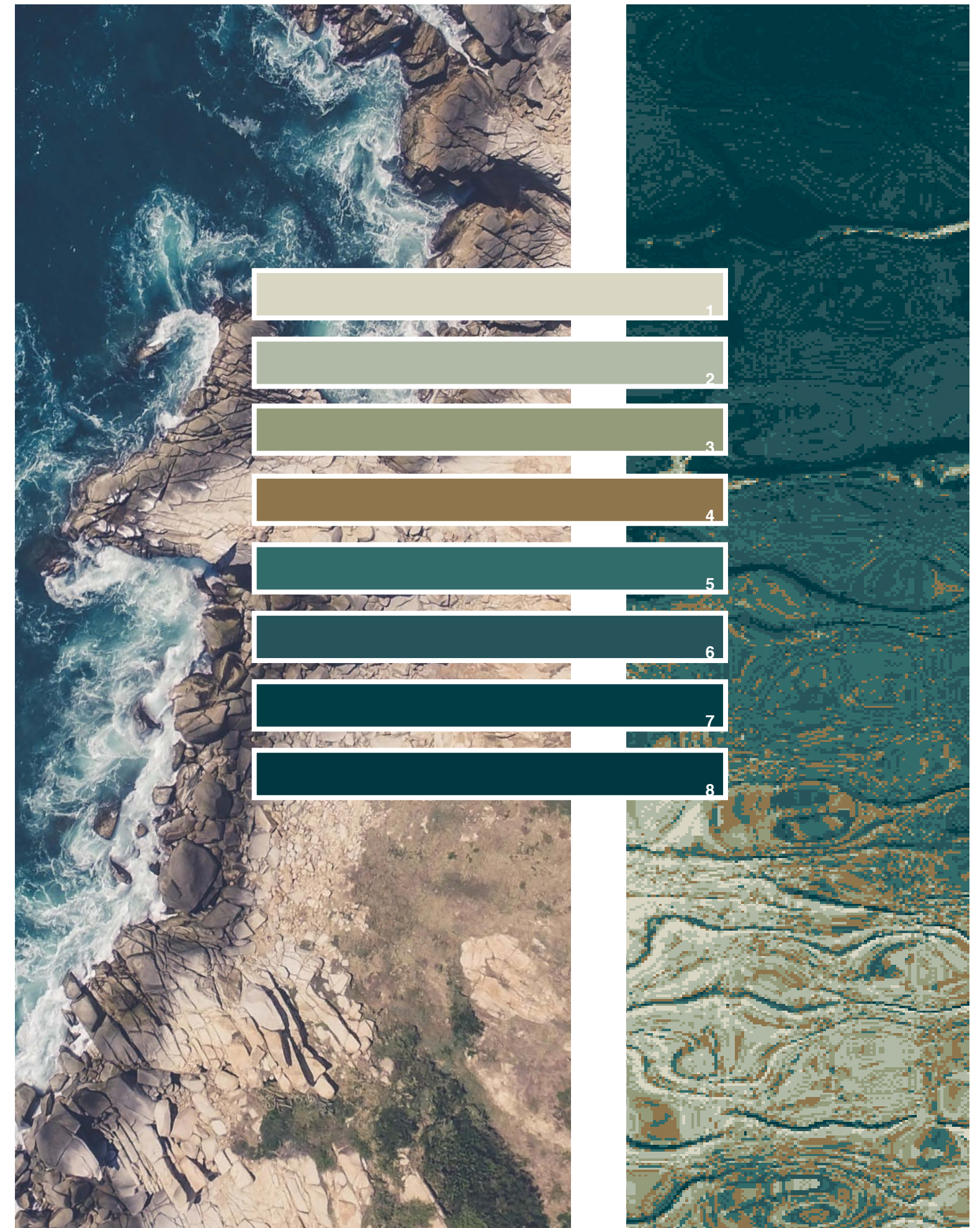
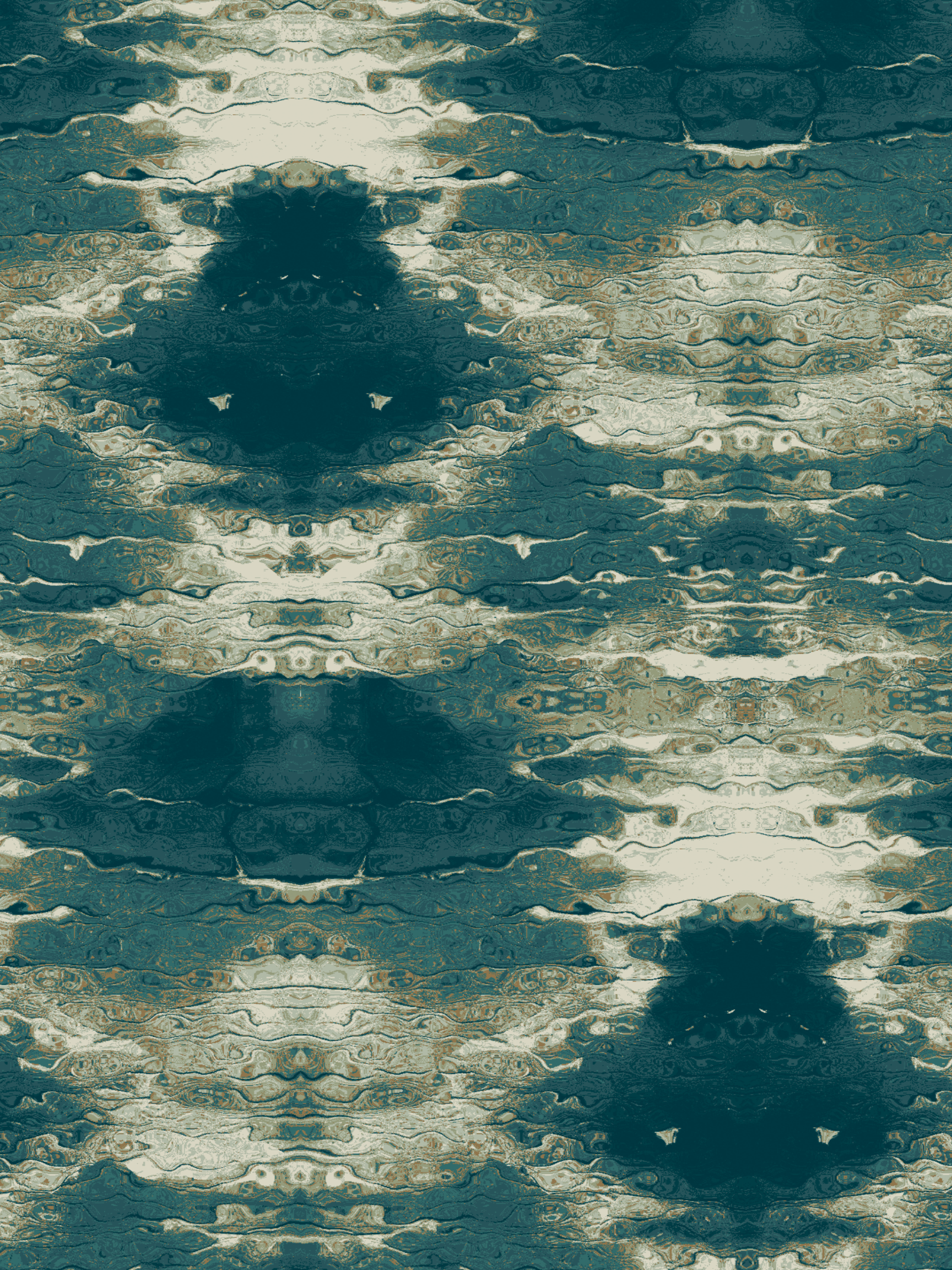




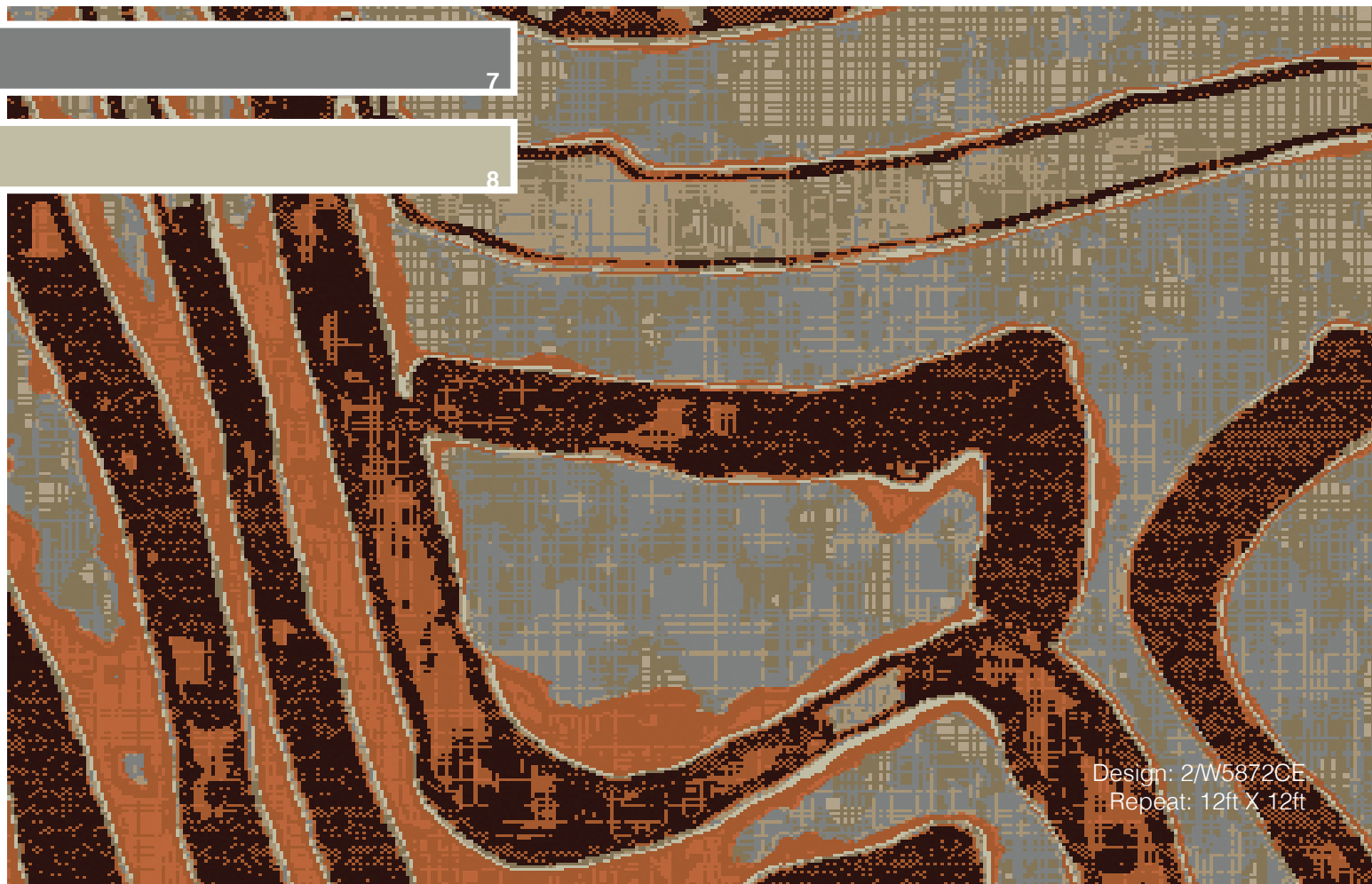
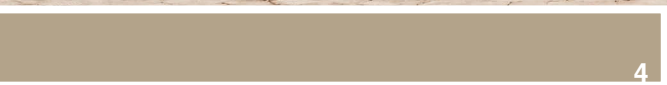
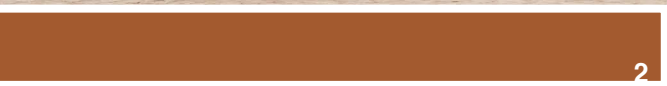
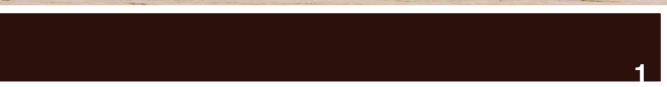
Design: 2/W8647CE
Repeat: 12ft X 17ft 6.33 in



Design: 2/W4265CE
Repeat: 24ft X 12ft 5in

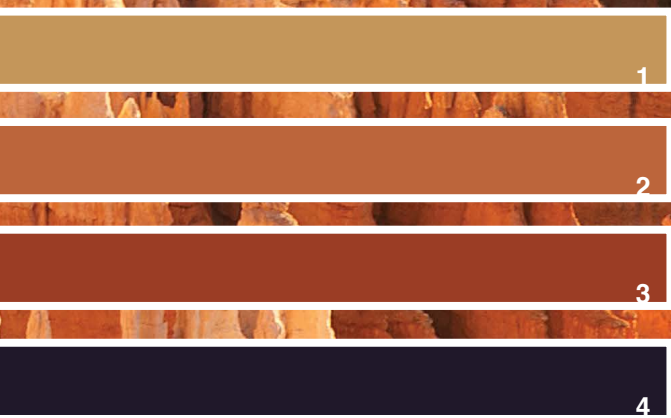
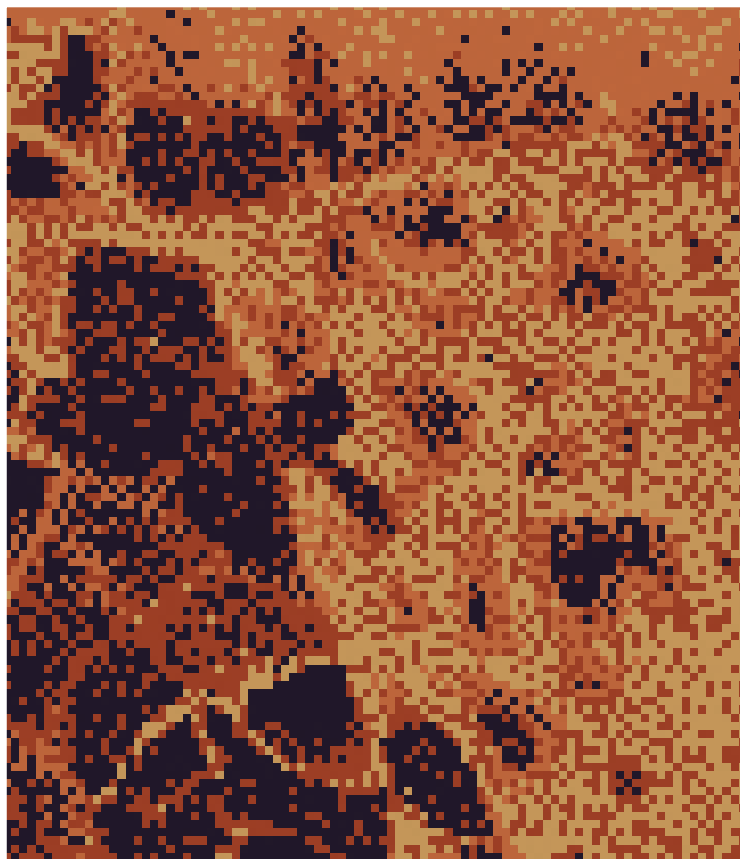




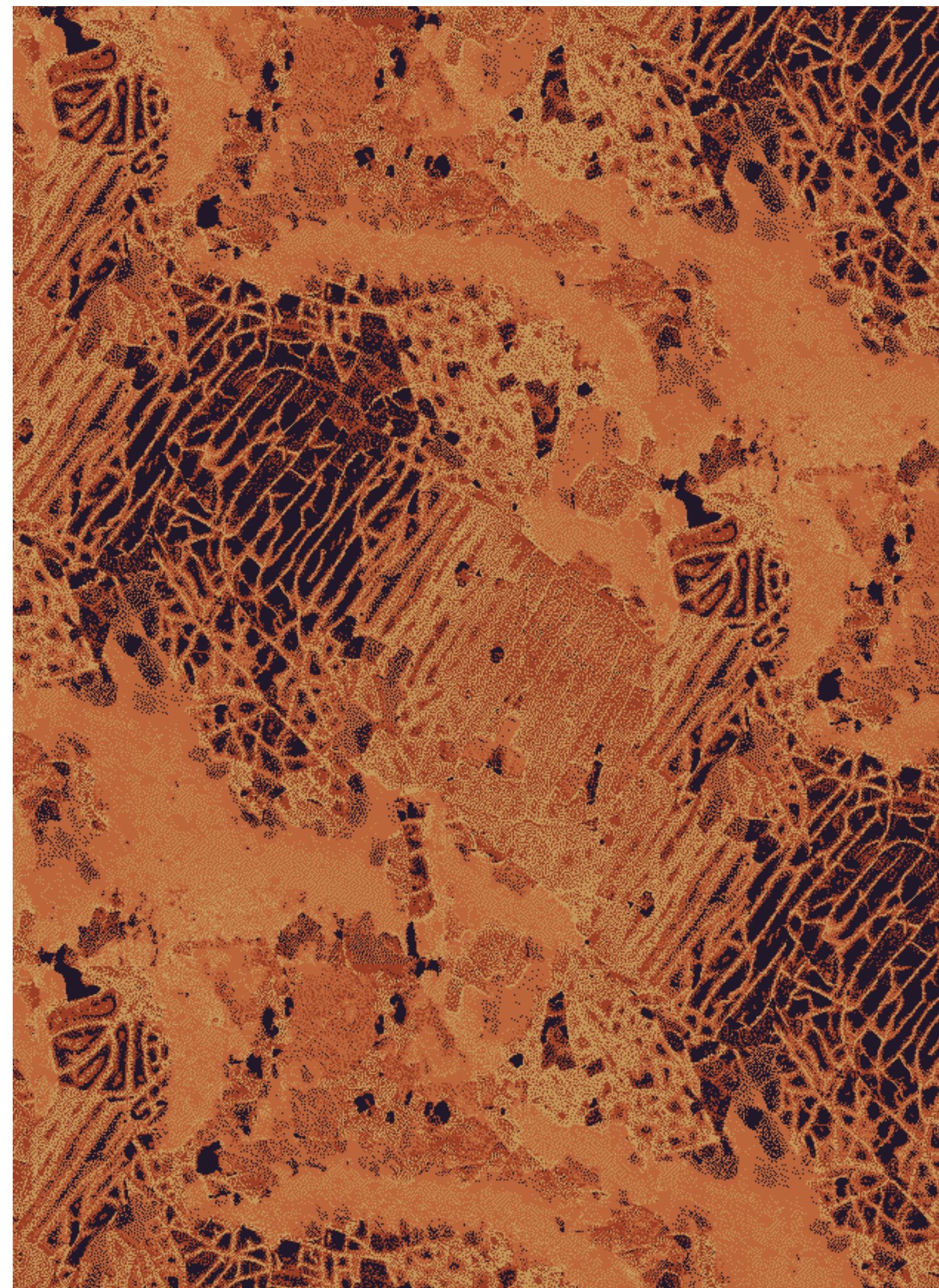


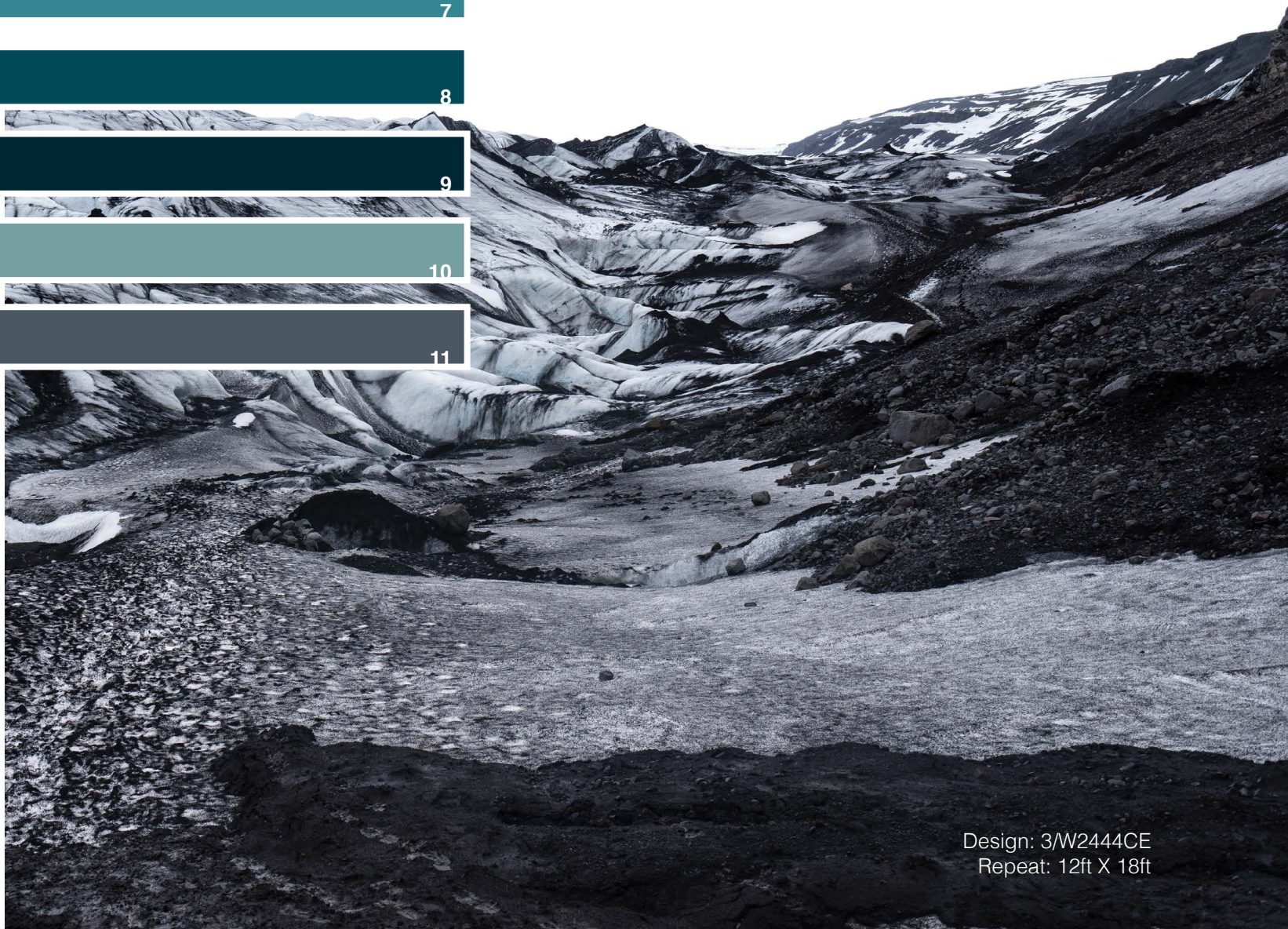
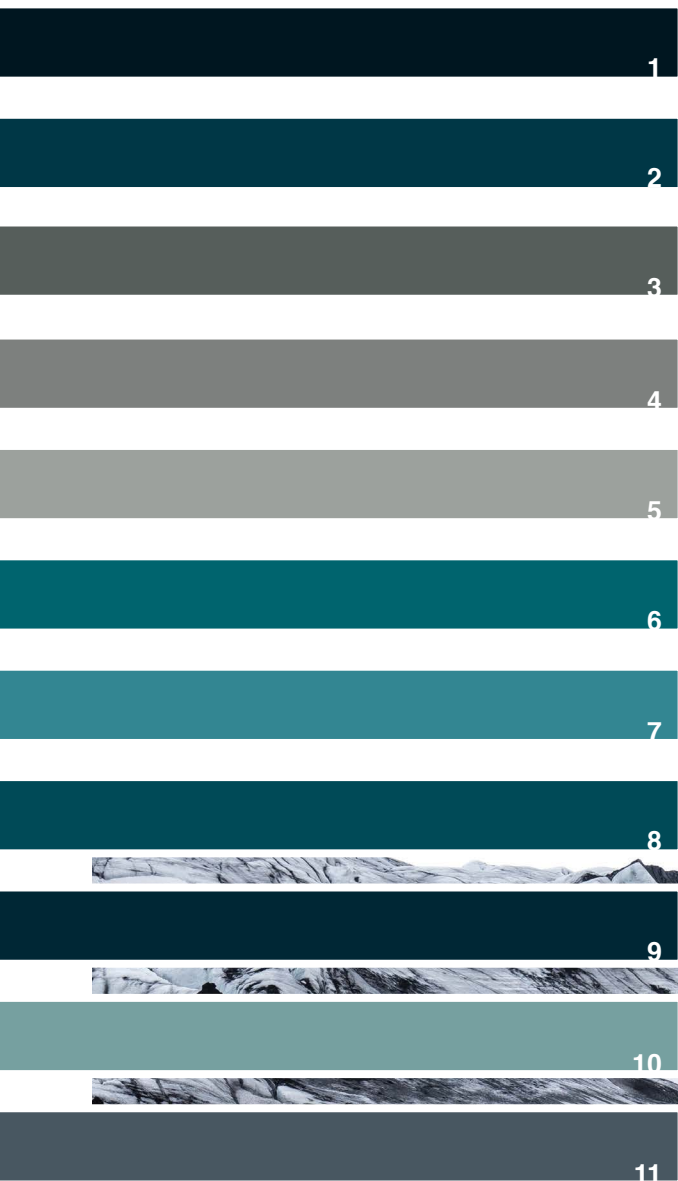
Design: 2/W5872CE
Repeat: 12ft X 12ft





Design: 1/W5531CE
Repeat: 5ft X 7ft 7.43 in

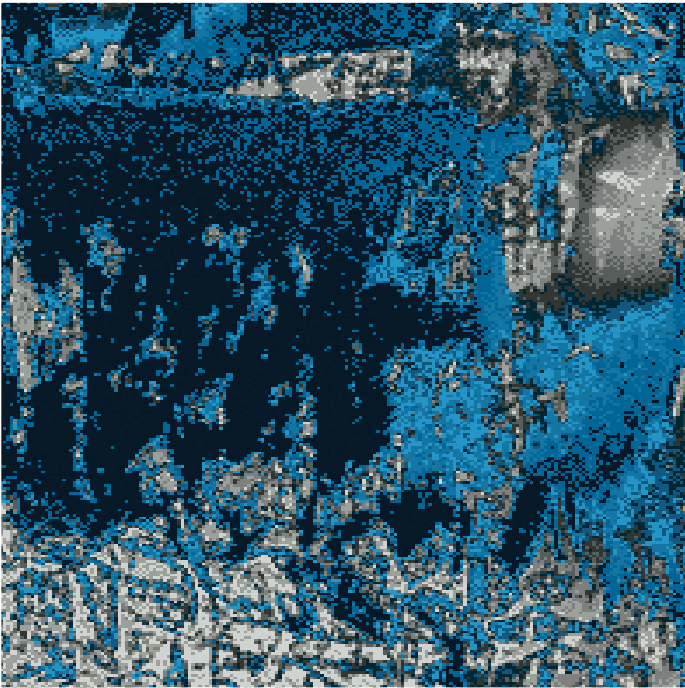
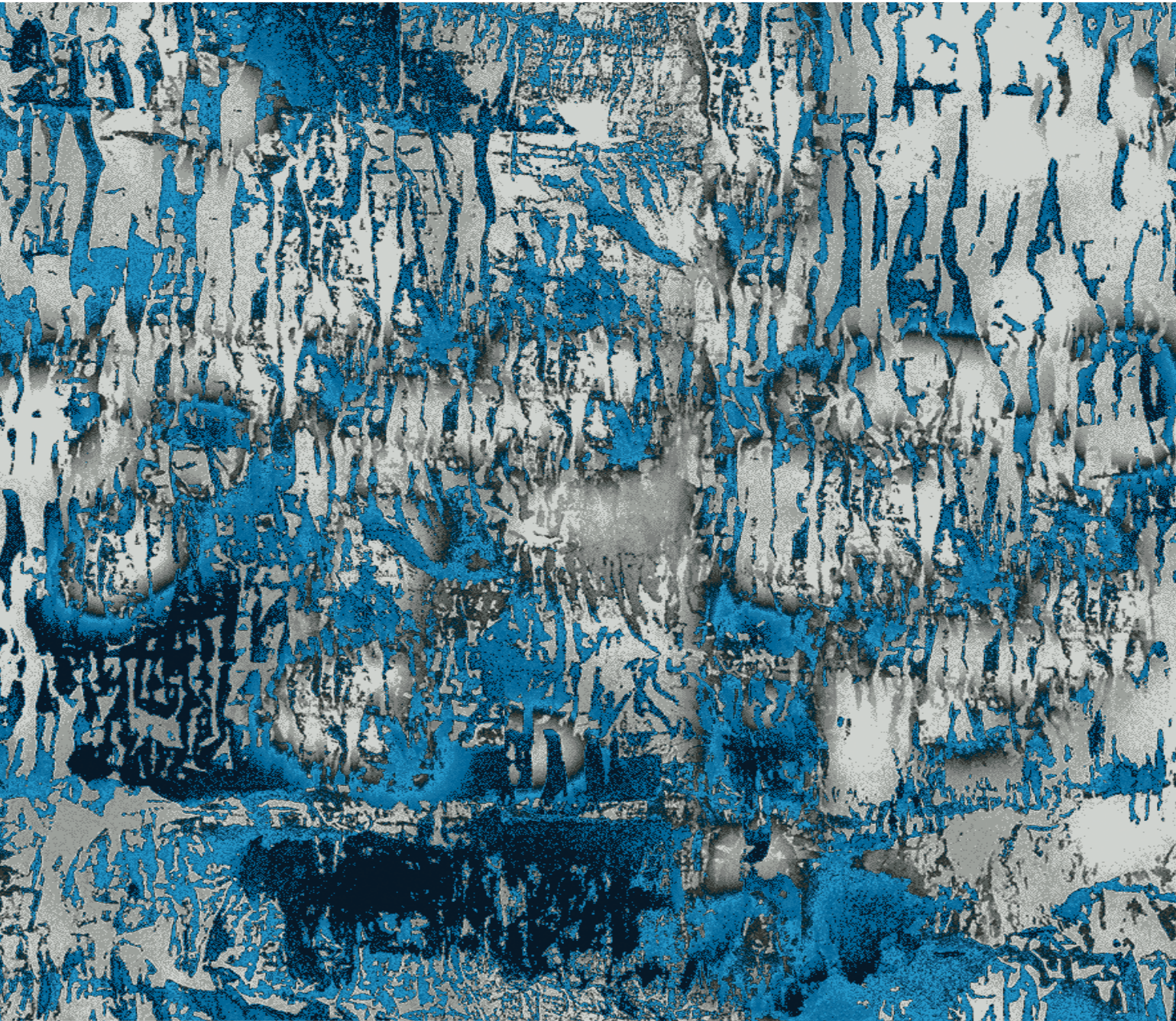
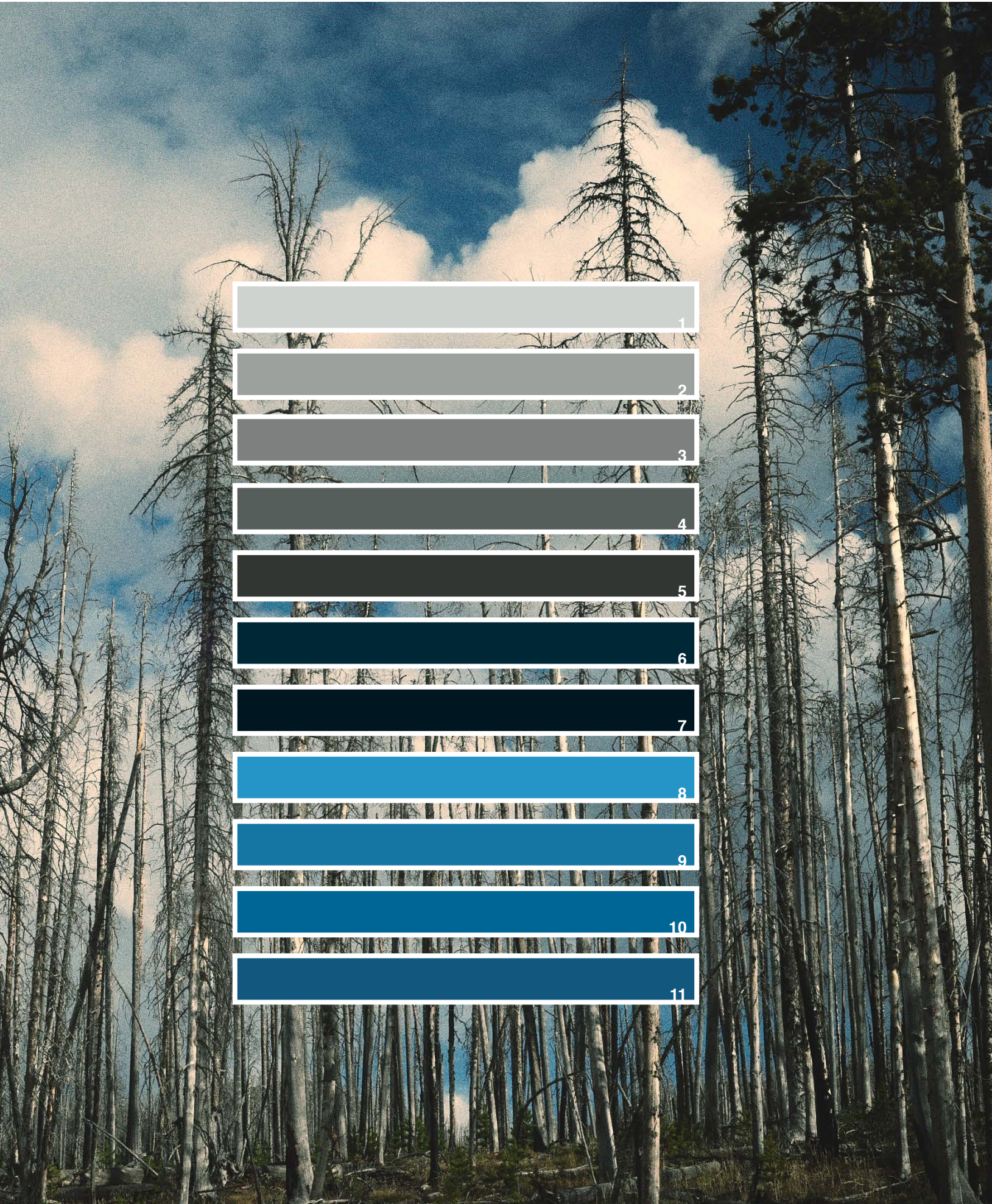


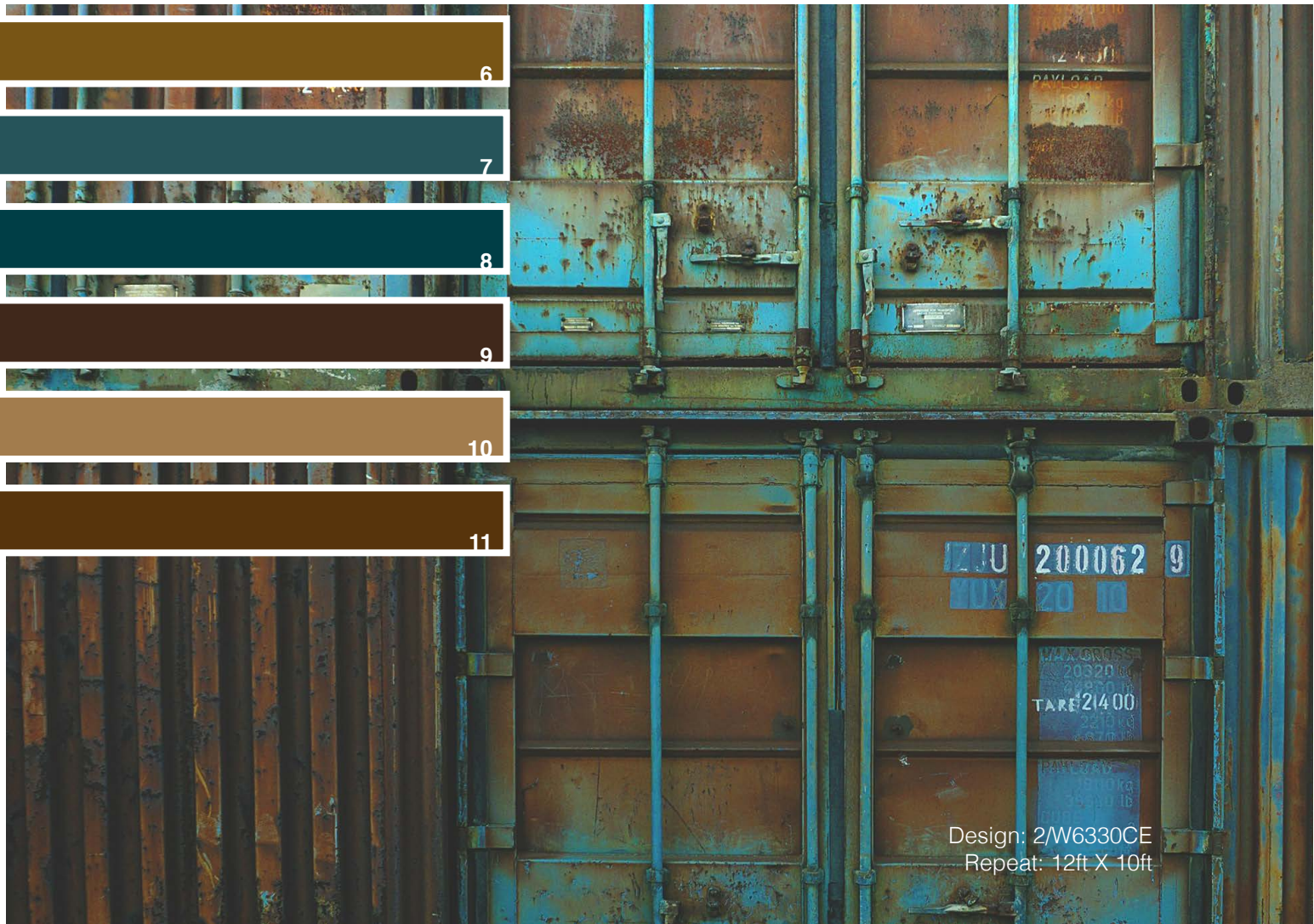
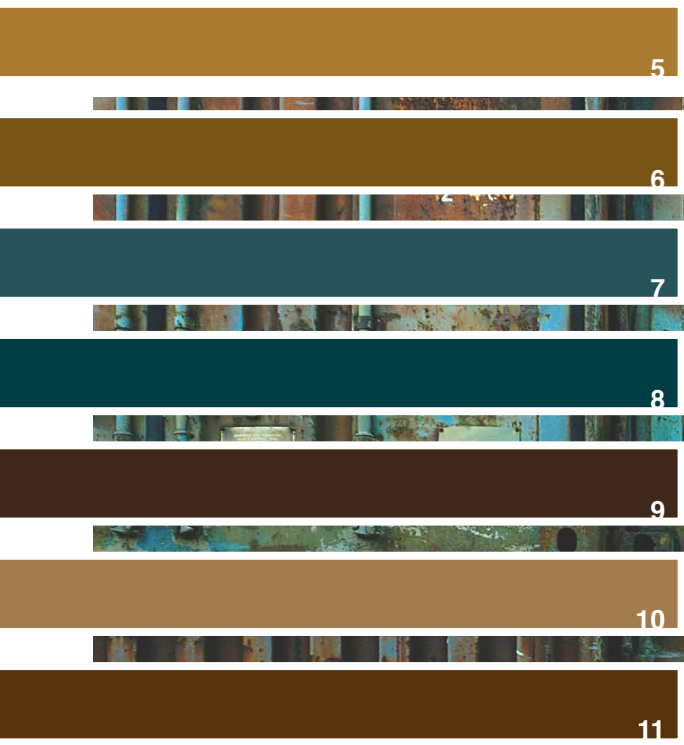
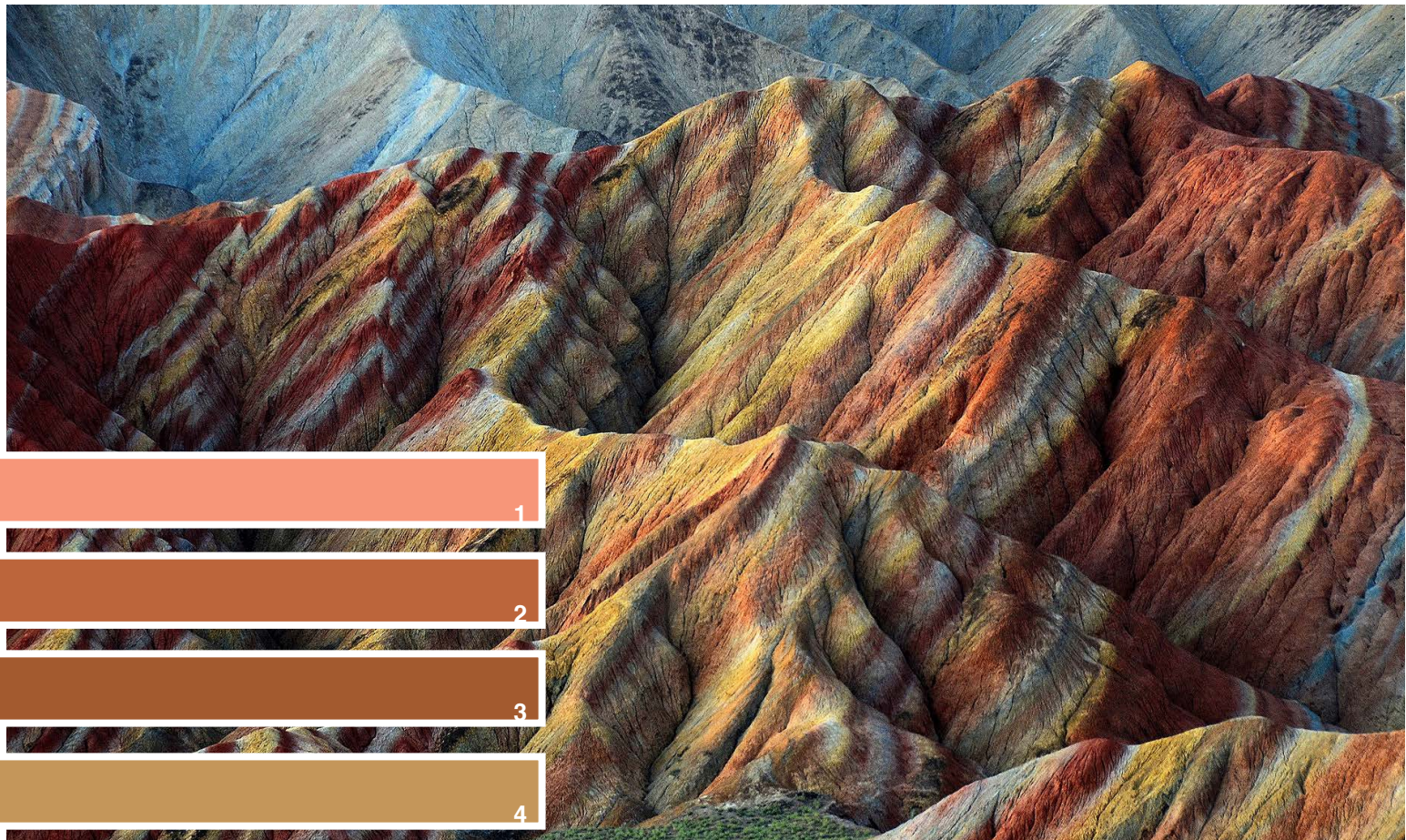


Design: 3/W2444CE
Repeat: 12ft X 18ft

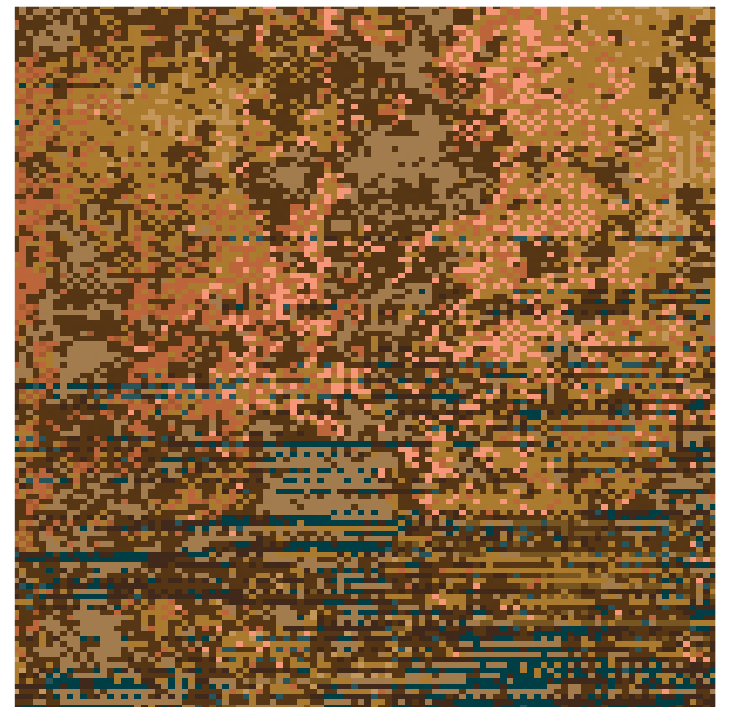




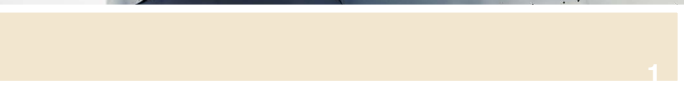
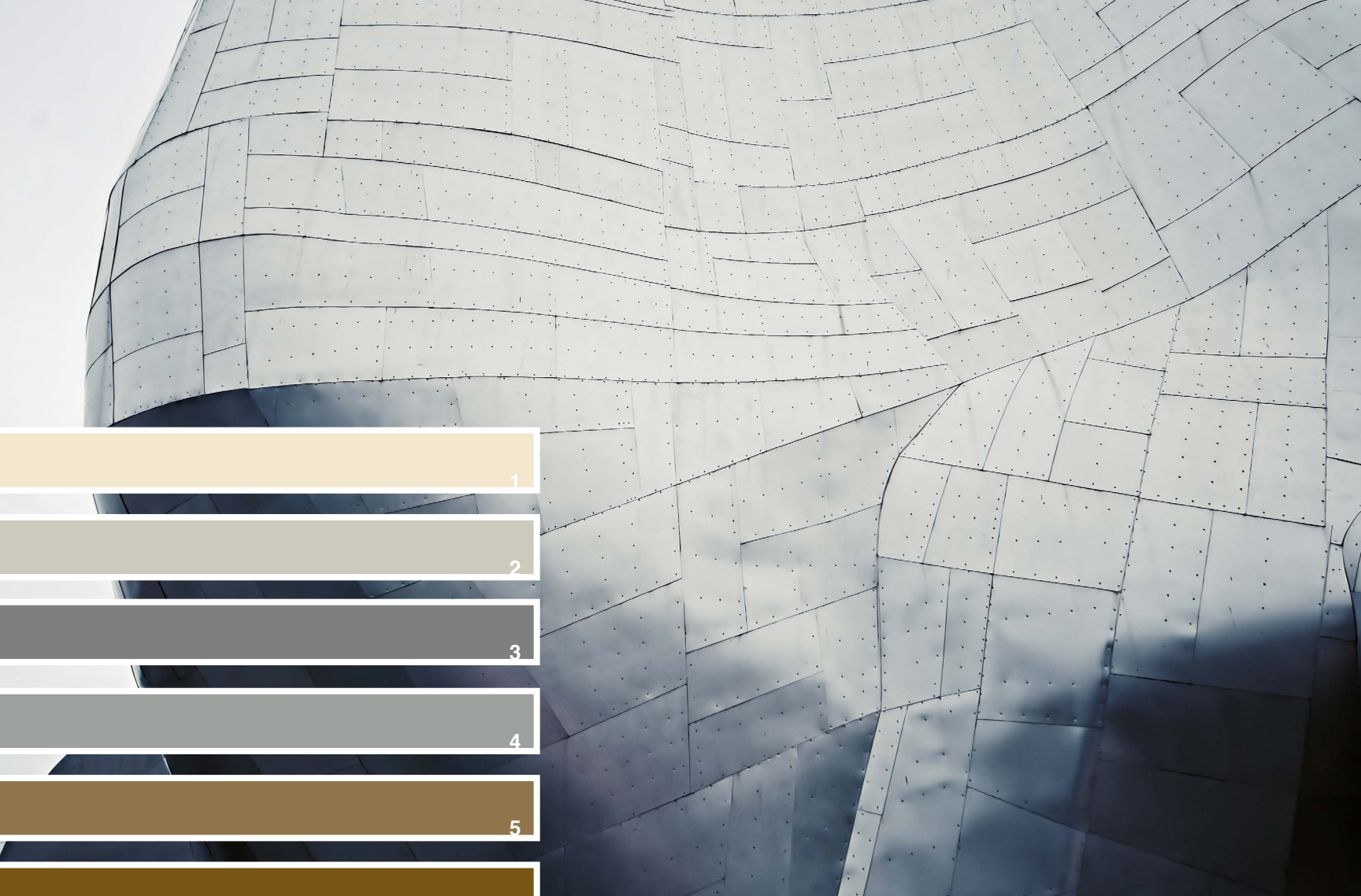




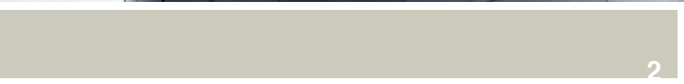
Design: 2/W6330CE
Repeat: 12ft X 10ft







1



2



3



4



5



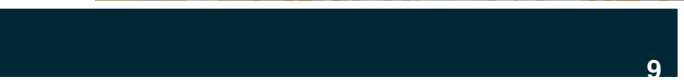
6



7



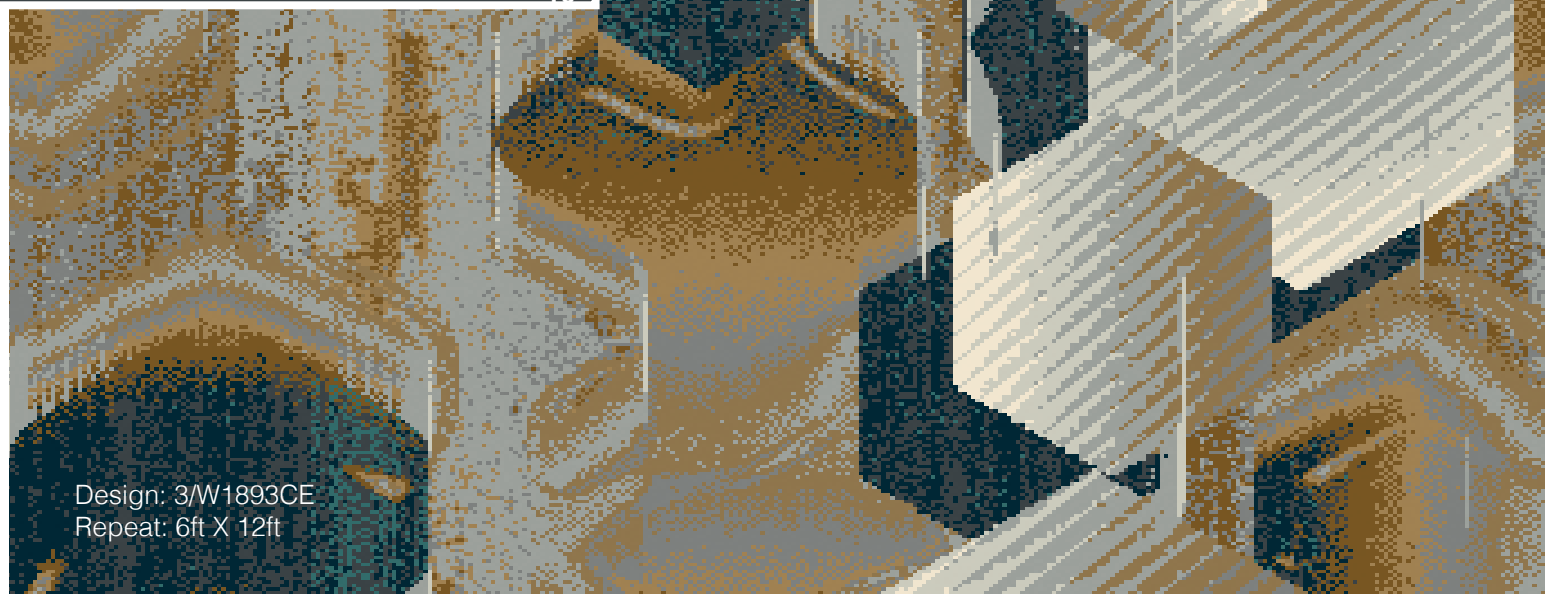
8



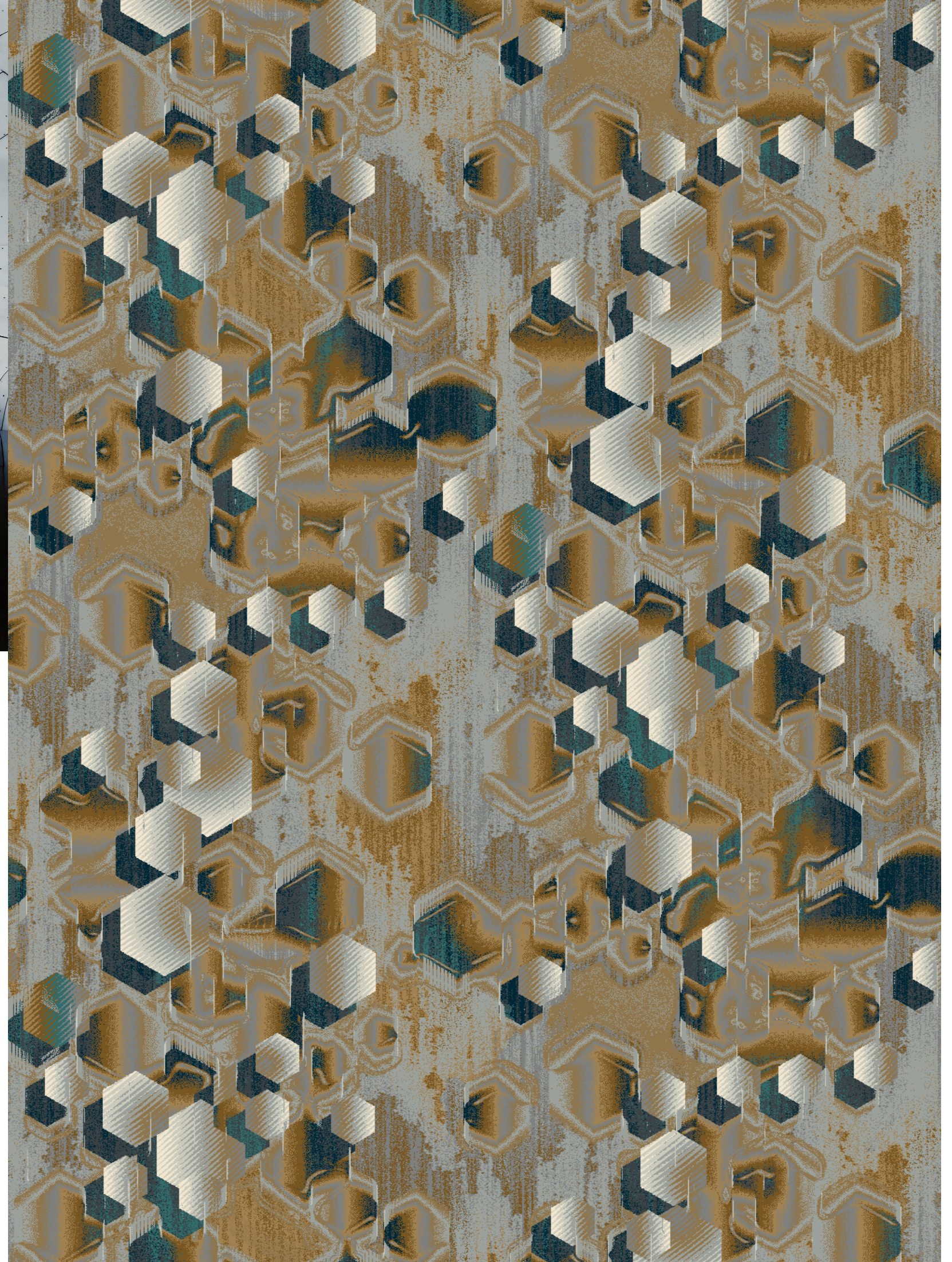
9

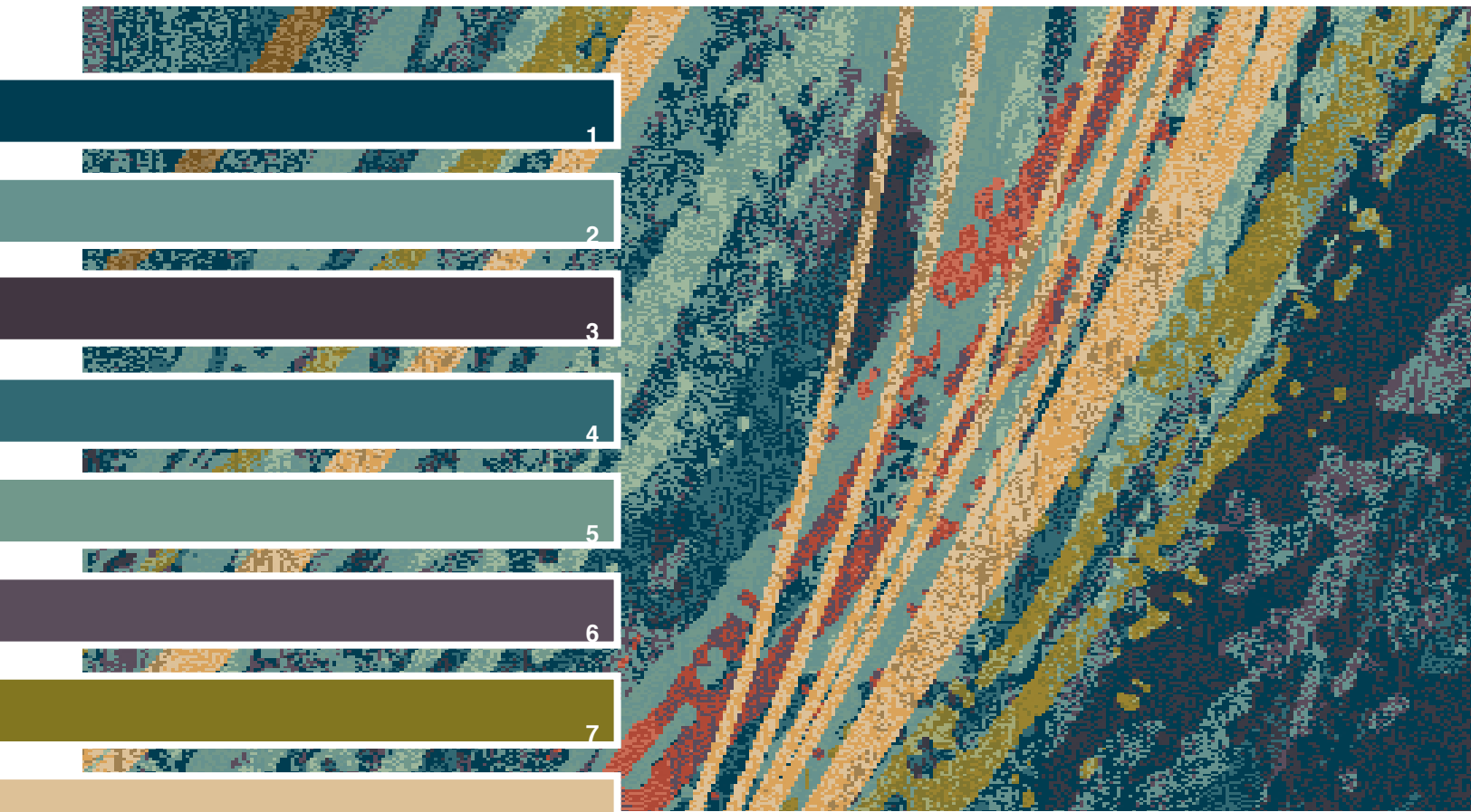


10

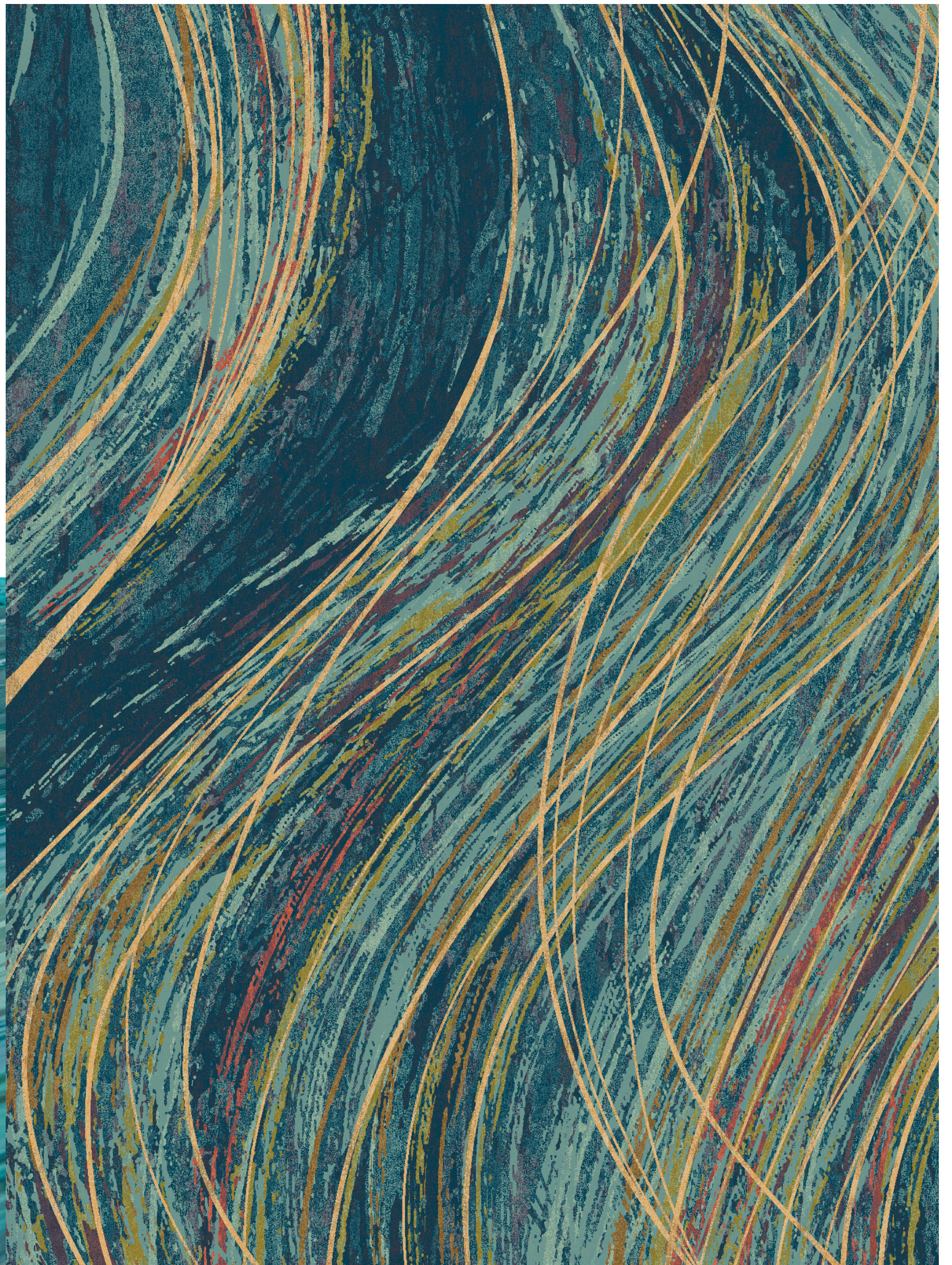


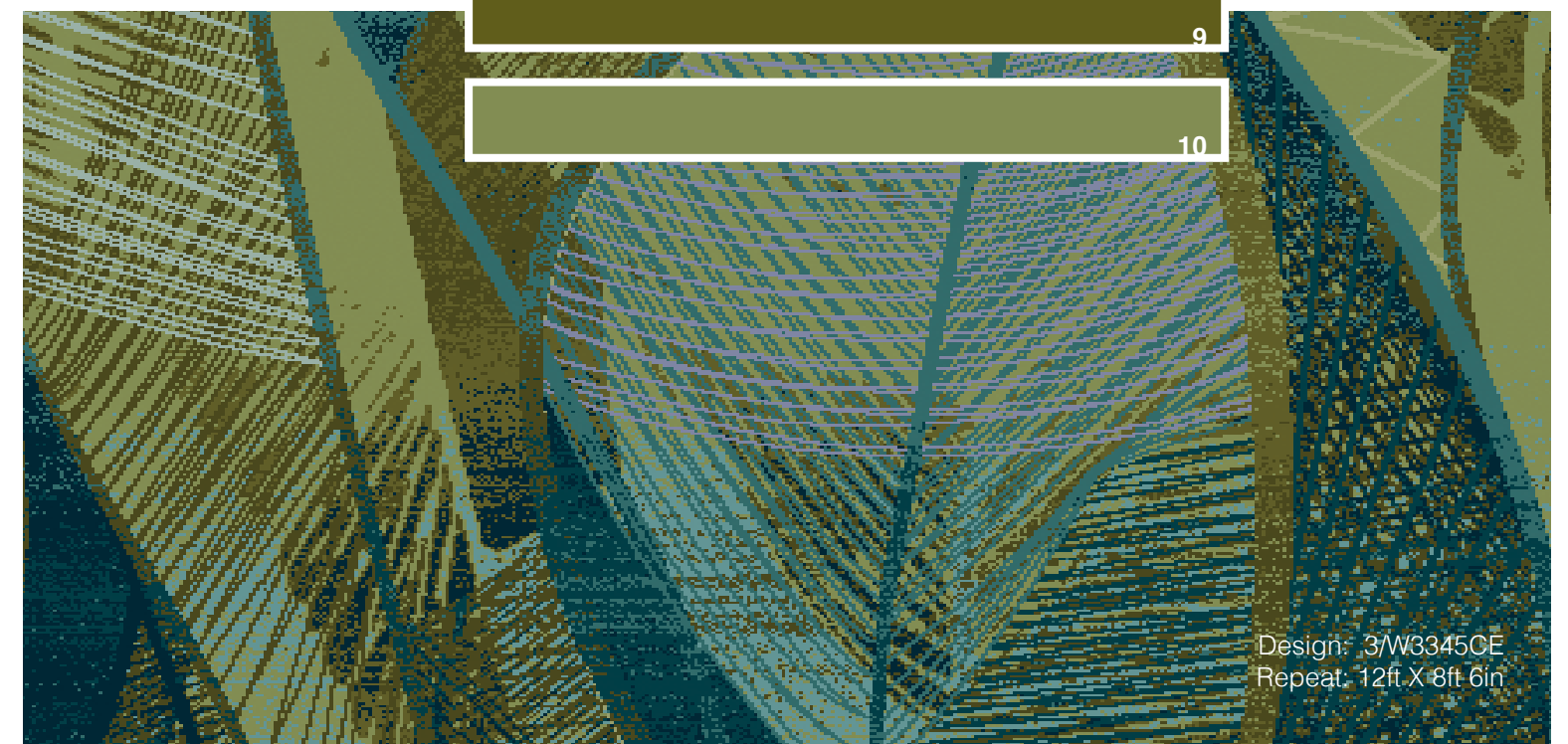
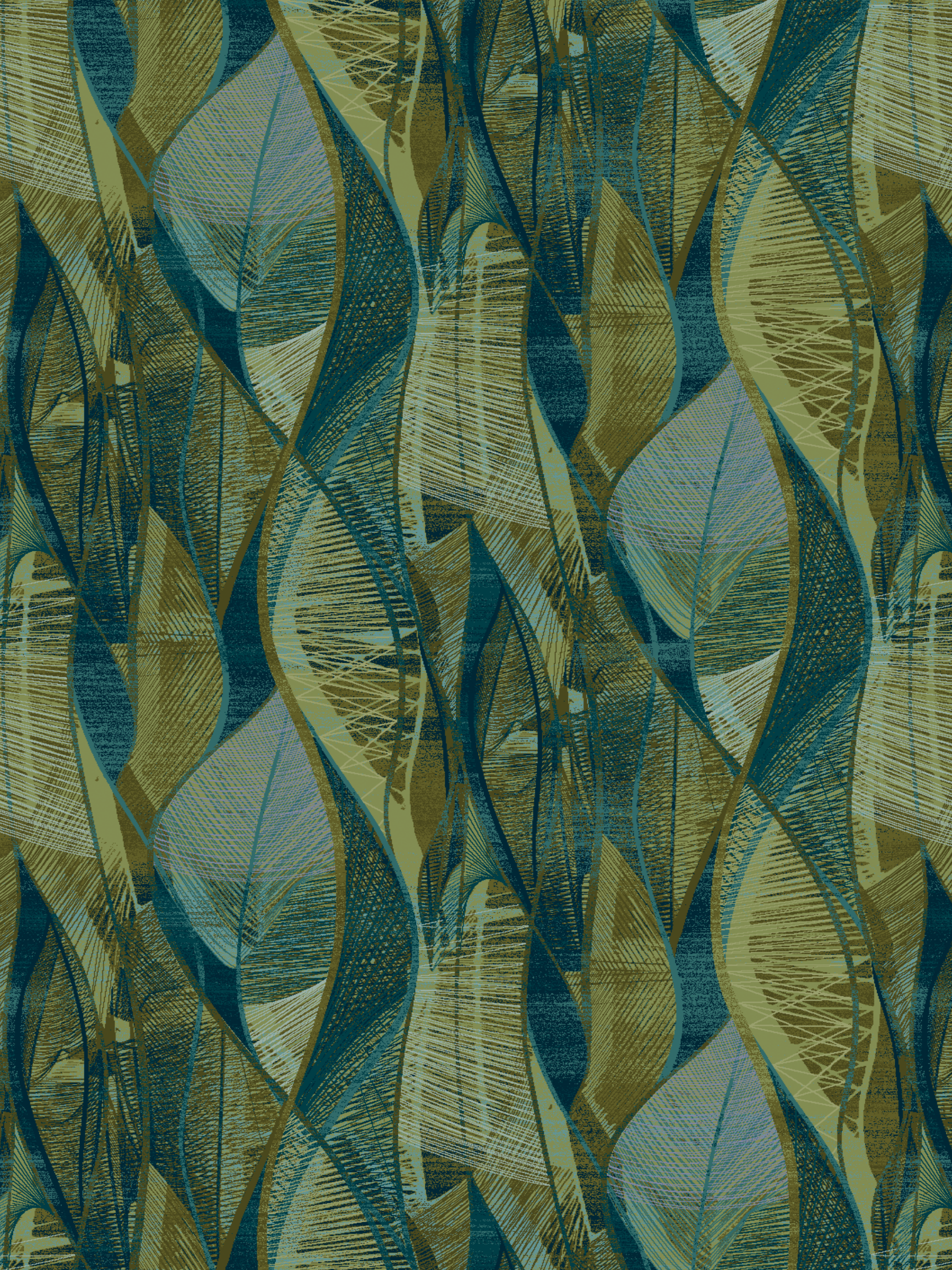
Design: 3/W1893CE
Repeat: 6ft X 12ft

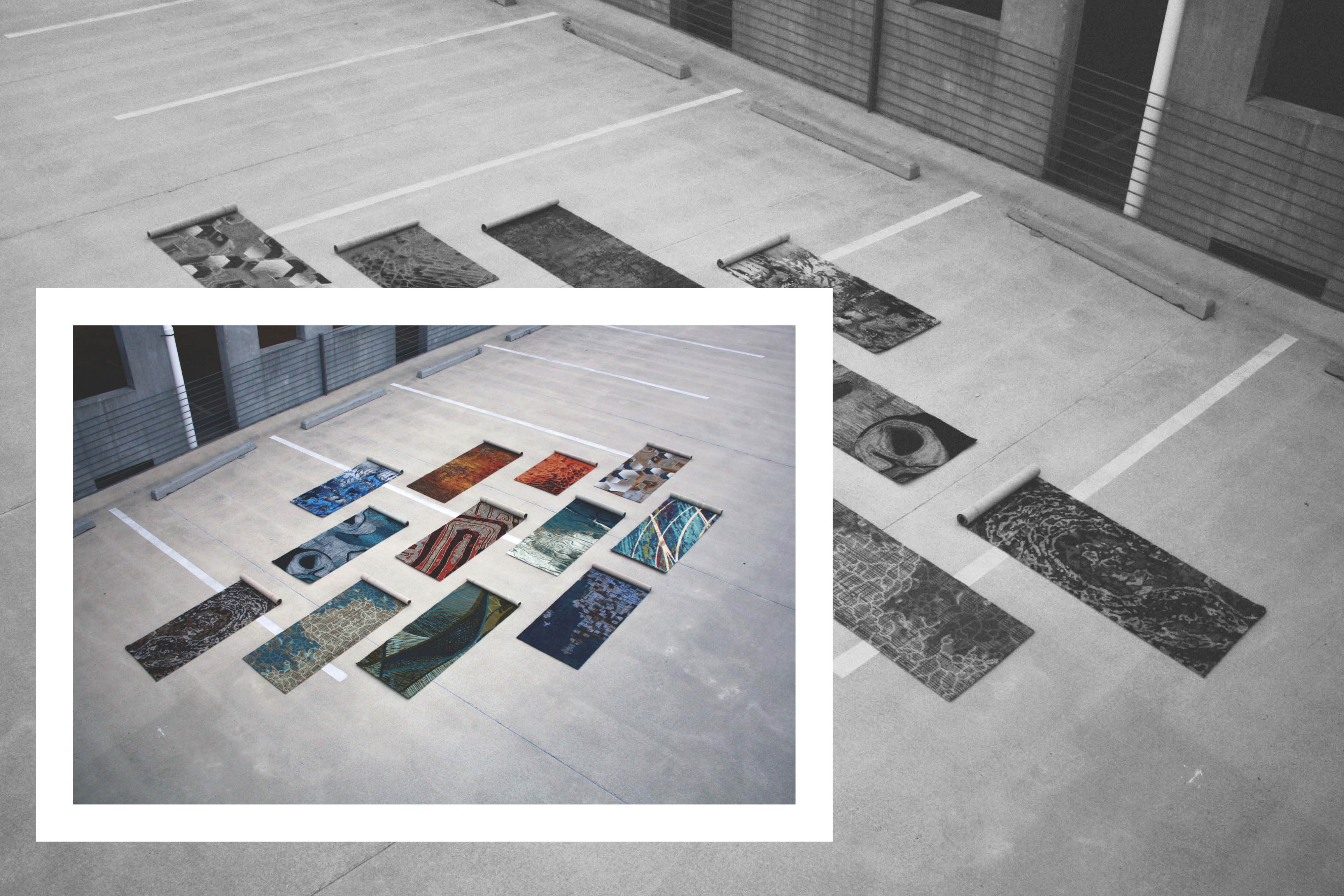
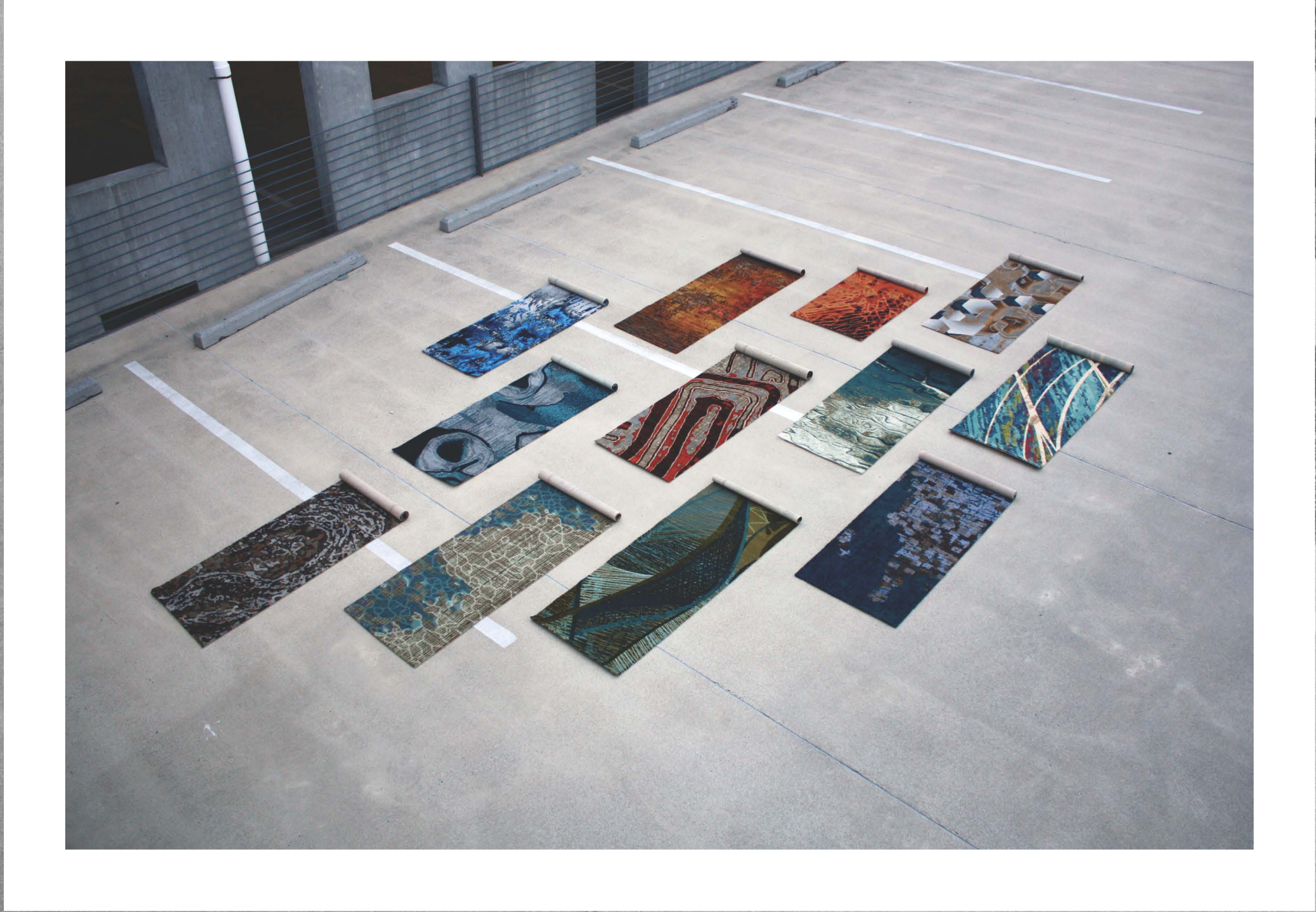




Design: 1/I923ZCE
Repeat: 48ft X 66ft 9.60in









Brintons

Americas
Brintons US Axminster Inc
Tel: +1 678 594 9300
Fax: +1 678 594 9301
Email: brintons@brintonsusa.com

EMEA
Brintons Carpets Ltd
Tel: +44 (0) 1562 635 665
Fax: +44 (0) 1562 634 737
Email: solutions@brintons.co.uk

APAC
Brintons Pty Ltd
Tel: +61 (0) 3 5226 3200
Fax: +61 (0) 3 5226 3242
Email: enquires@brintons.com.au

www.brintons.net

© Copyright Brintons Carpets Limited 2016. All copyright, design rights, and intellectual property rights existing in our designs are and will remain the property of Brintons Carpets Limited. Any infringement upon those rights will be pursued vigorously. Colors are reproduced within the limits of the printing process.